



TECUMSEH PRODUCTS INDIA PVT. LTD.

TECHNICAL SPECIFICATIONS

AWZ5524EXN
(208/230V - 1Ph - 60Hz)



AWZ5524EXN

208/230V-60Hz-1Ph

PERFORMANCE SPECIFICATION:

Model	AWZ5524EXN	
Bill of Material	4 LEG -STANDARD	AWZ5524EXN0001
	3 LEG - STANDARD	AWZ5524EXN0003
	4 LEG -SHORT	AWZ5524EXN0002
	3 LEG - SHORT	-
APPLICATION	AIR CONDITIONING /HEAT PUMP	
REFRIGERANT	R-22	
ELECTRICAL RATING	230 / 208V - 60Hz – 1Ph	
CAPACITY (BTU/HR) (KCAL/HR) (Watts)	24600 6200 7210	
INPUT POWER (W)	2480	
INPUT CURRENT (A)	11.0	
EFFICIENCY (BTU/W-HR) (KCAL/W-HR) (W/W)	9.9 2.5 2.9	

Note: Performance Tolerance - ± 5%

RATING CONDITIONS (ASHRAE-T)

Evaporator Temperature	45 °F	7.2 °C
Condensing Temperature	130 °F	54.4 °C
Return Gas Temperature	95 °F	35 °C
Liquid temperature	115 °F	46 °C
Ambient temperature	95 °F	35 °C



AWZ5524EXN

208/230V-60Hz-1Ph

COMPRESSOR SPECIFICATION

COMPRESSOR TYPE	HERMETIC RECIPROCATING
SUCTION SCHEME	LOW SIDE DOME
NUMBER OF CYLINDERS	TWO (2)
DISPLACEMENT (IN ³ /REV) (CC/REV) (CFH) (CMH)	2.64 43.26 319.6 9.0
OIL CHARGE (INITIAL, FL. OZ.) (REFILL, FL. OZ.) (INITIAL, CC.) (REFILL, CC.)	38 (COLD) 34 (COLD), 36 (HOT) 1,130 (COLD) 1,006 (COLD), 1,066 (HOT)
OIL SPECIFICATION	SUNISO 3GS
OIL CIRCULATION RATE (LB/H) (G/H)	1.8 816
REFRIGERANT CHARGE (LBS.) (KG)	5.14 2.34
INTERNAL PRESSURE RELIEF VALVE OPERATING DIFFERENTIAL (PSI) (KG/CM ²)	525 ± 25 37.0 ± 1.8
COMPRESSOR WEIGHT (LBS. WITH OIL) (KG WITH OIL)	61.0 27.7
SOUND POWER LEVEL ON KIT (dBA)	70 ± 3
DISCHARGE PRESSURE PULSE (PSI)	1.0 NOMINAL
INCLINATION	<= 5°
COMPRESSOR FINISH	BAKED ENAMEL (BLACK)



AWZ5524EXN

208/230V-60Hz-1Ph

MOTOR SPECIFICATION:

MOTOR TYPE	PERMANENT SPLIT CAPACITOR
NOMINAL OUTPUT (HP)	2.75
NOMINAL VOLTAGE (V)	60Hz - 208 / 230
VOLTAGE RANGE (V)	60Hz-197-253
FREQUENCY / PHASE (Hz / ϕ)	60 / 1
NUMBER OF POLES	Two (2)
NOMINAL SPEED (RPM)	3500
LOCKED ROTOR CURRENT (A)	60.0
RATED LOAD CURRENT (A)	11.0
MAXIMUM CONTINUOUS CURRENT (A)	18.3
MOTOR COOLING	SUCTION GAS
MAXIMUM WINDING TEMPERATURE °F/°C	265/130
INSULATION CLASS (°C)	Class B (130°C)
MOTOR CU WIRE ENAMELED CLASS	POLYSTER IMIDE as Base Coat 180°C POLYAMIDE IMIDE as Top Coat 220°C
WINDING RESISTANCE MAIN WINDING (OHM) START WINDING (OHM)	AT 77° F (25° C) 0.98 3.0
MOTOR PROTECTOR PART NUMBER MOTOR PROTECTOR TYPE OPENING TEMPERATURE (°C) CLOSING TEMPERATURE (°C) ULTIMATE TRIP CURRENT AT 71 °C MIN (EPA) COMMON (A) FIRST CYCLE TRIP CURRENT (EPA 25°C) 2-10 SECONDS COMMON (A)	15HM 2311-148 INTERNAL 120 69 21.2 56



AWZ5524EXN

208/230V-60Hz-1Ph

APPLICATION SPECIFICATION

Discharge Pressure Range (PSI)	143.6 – 464.0
(KG/CM ²)	10.1 - 32.63
Suction Pressure Range (PSI)	13.2 – 92.6
(KG/CM ²)	0.9 - 6.5
Discharge Pressure Range (PSI)	580 at 230 Volts
Block Fan Test (KG/CM ²)	40.78
Compression Ratio (Max)	7.3
Discharge Temperature (°F)	290
(°C)	143
Bottom Shell Temperature (°F)	$\geq E_T + 35$
(°C)	$\geq E_T + 19.4$
Outdoor / Indoor Conditions (°F)	67.0 DBT / 57.0 WBT
(°C)	19.4 DBT / 13.9 WBT
Superheat (°F)	19.4
(°C)	10.8
Inclination	$\leq 5^\circ$
Maximum Ambient (°C)	54
At Start Voltage of 198 V	

PROCESS SPECIFICATION

Moisture Limit (mg)	75 (After Dehydration)
Residue Limit (mg)	Not available for finished compressor
Leak Test Pressure (PSI)	150
(KG/CM ²)	10.6
Shell Integrity Test (PSI)	200
(KG/CM ²)	14.1
UL Shell Integrity (PSI)	1000
(KG/CM ²)	70.4
High Potential Test (Volts)	1500 for One (1) Second
Current Leakage limit (mA)	1.3



AWZ5524EXN

208/230V-60Hz-1Ph

APPLICABLE SAFETY STANDARDS

UL File Number	-
UL Class Number	-
VDE File Number	-
VDE License Number	-

COMPRESSOR ACCESSORIES

Parts Name	Drawing No.	Qty.
Mounting Grommet	AWX – 2025 – 03	1 / Leg
Mounting Sleeve	AWX – 2026 – 04	1 / Leg
Terminal Cover	AWX-2079-02	1
Terminal Cover Gasket	AWX-2078-00	1
Spring Clip (Bale Strap)	70661 – 03	1

COMPRESSOR ACCESSORIES (OPTIONAL)

Parts Name	Part Code / Specifications	Qty.
Run Capacitor (MFD, Volts)	35 MFD, 370 VAC	1
PTC Starting Device (Ohms)	NA	-
Start Capacitor (MFD, Volts) (Optional)	NA	-
Potential Relay (Optional) Pick up Volts (Hot) Drop-Out Volts (Cold)	NA	-
Crank case Heater (TPC / TI) Voltage Limit (Volts) Power Output (Watts)	NA	-



AWZ5524EXN

208/230V-60Hz-1Ph

APPLICABLE DRAWINGS

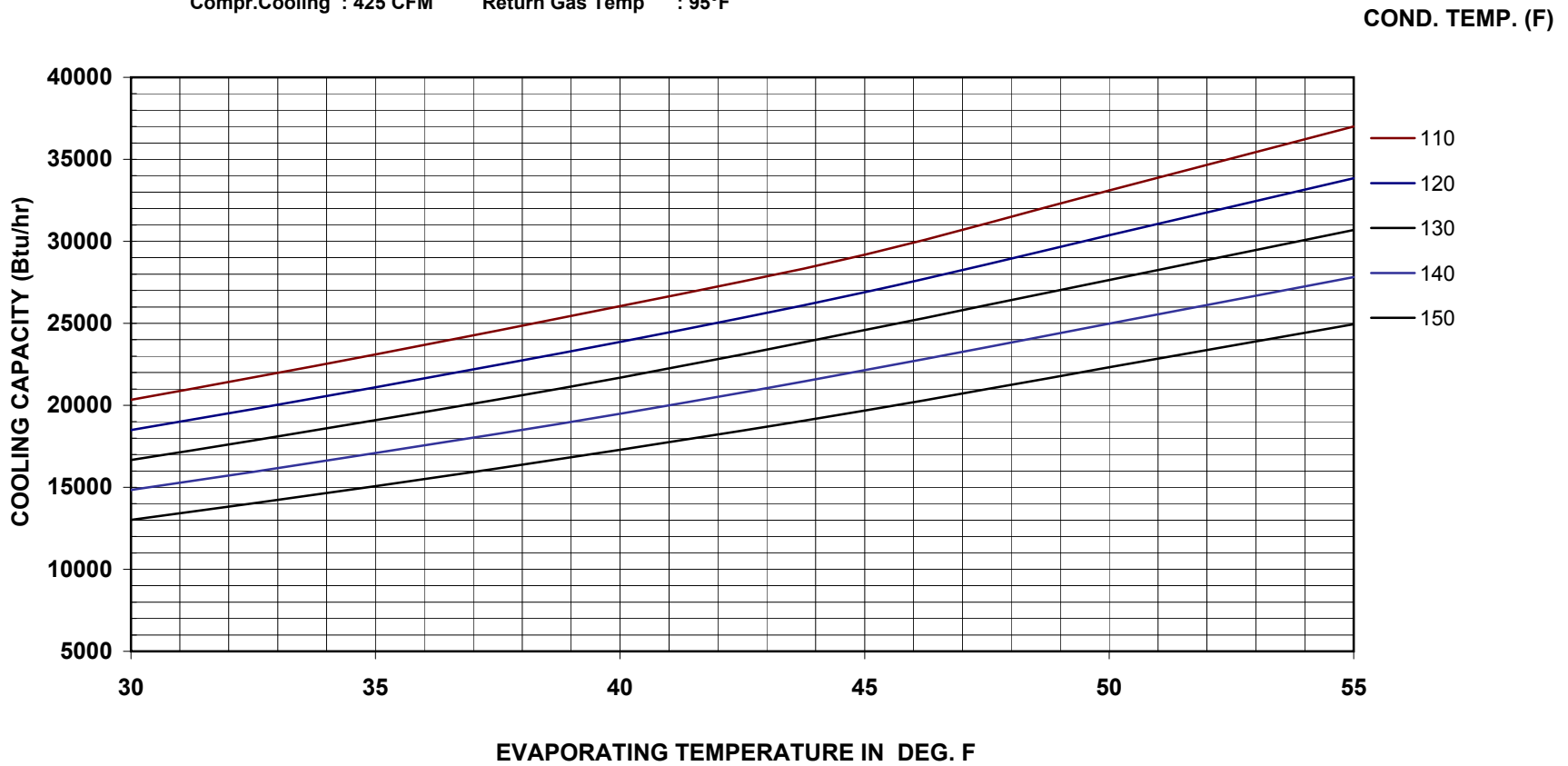
Performance Curves	Cooling Capacity	Enclosed
	Power	Enclosed
	Mass flow	Enclosed
	Current	Enclosed
IOLP curves	Enclosed	
Compressor Sales Drawing	4 LEG -STANDARD	AWX-3387-00
	3 LEG - STANDARD	AWX-3388-00
	4 LEG -SHORT	AWX-3341-00
	3 LEG - SHORT	-
Wiring diagram PSC / PTCS-CR / CSR / 3-PH	AWX-3383-00	
Serial Label	52597E	
Mounting Grommet	AWX – 2025 – 03	
Mounting Sleeve	AWX – 2026 – 04	
Protective Cover	AWX – 2079 – 02	
Gasket for Protective Cover	AWX – 2078 – 00	
Bale Strap	70661 - 03	

Tecumseh Products India Pvt. Limited - Hyderabad



PERFORMANCE CURVES FOR AWZ 5524EXN COMPRESSOR

Application : HBP Refrigerent : R-22 Voltage : 230V
Frequency : 50 Hz Ambient Temp : 95°F Liquid Sub Cooled : 115°F
Compr.Cooling : 425 CFM Return Gas Temp : 95°F

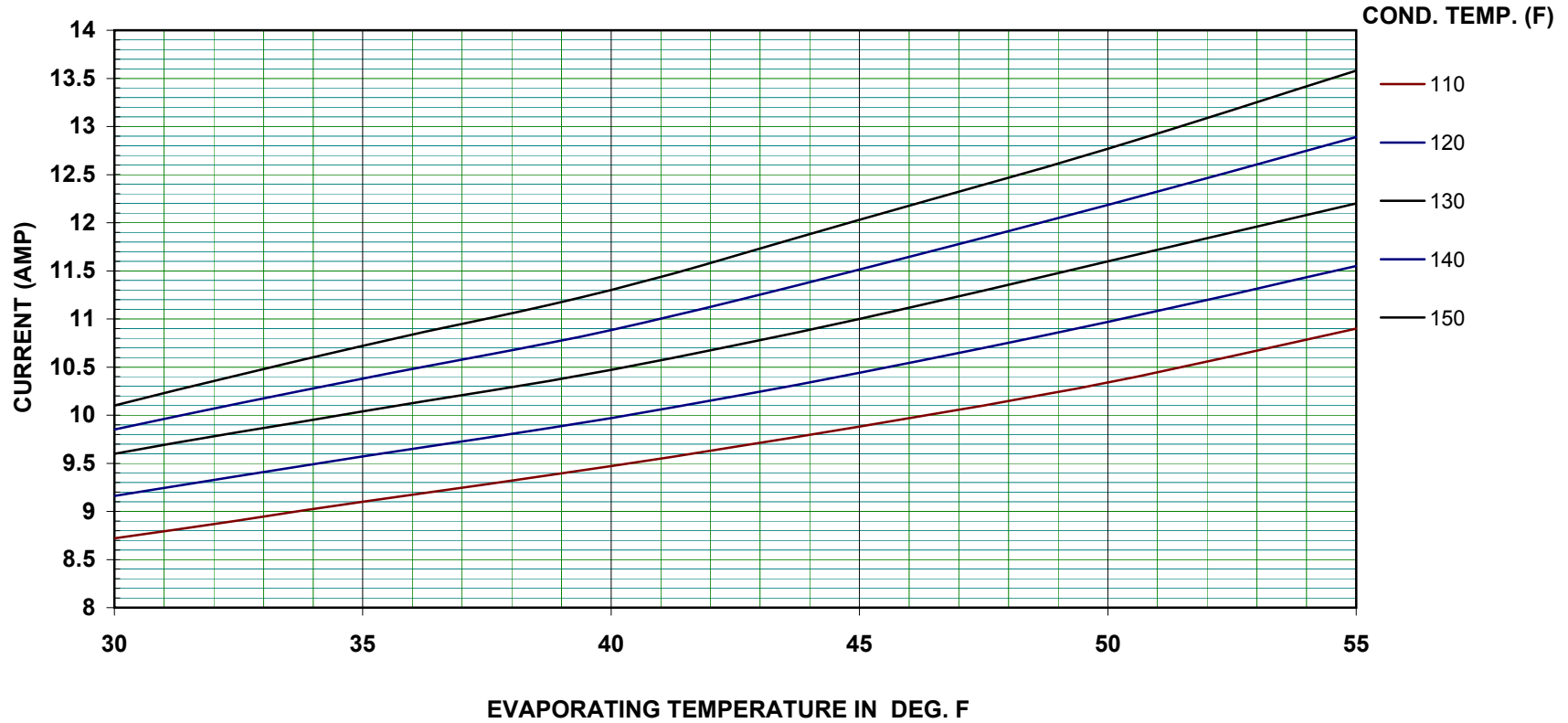


Tecumseh Products India Pvt. Limited - Hyderabad



PERFORMANCE CURVES FOR AWZ 5524EXN COMPRESSOR

Application : HBP Refrigerent : R-22 Voltage : 230V
Frequency : 50 Hz Ambient Temp : 95°F Liquid Sub Cooled : 115°F
Compr.Cooling : 425 CFM Return Gas Temp : 95°F

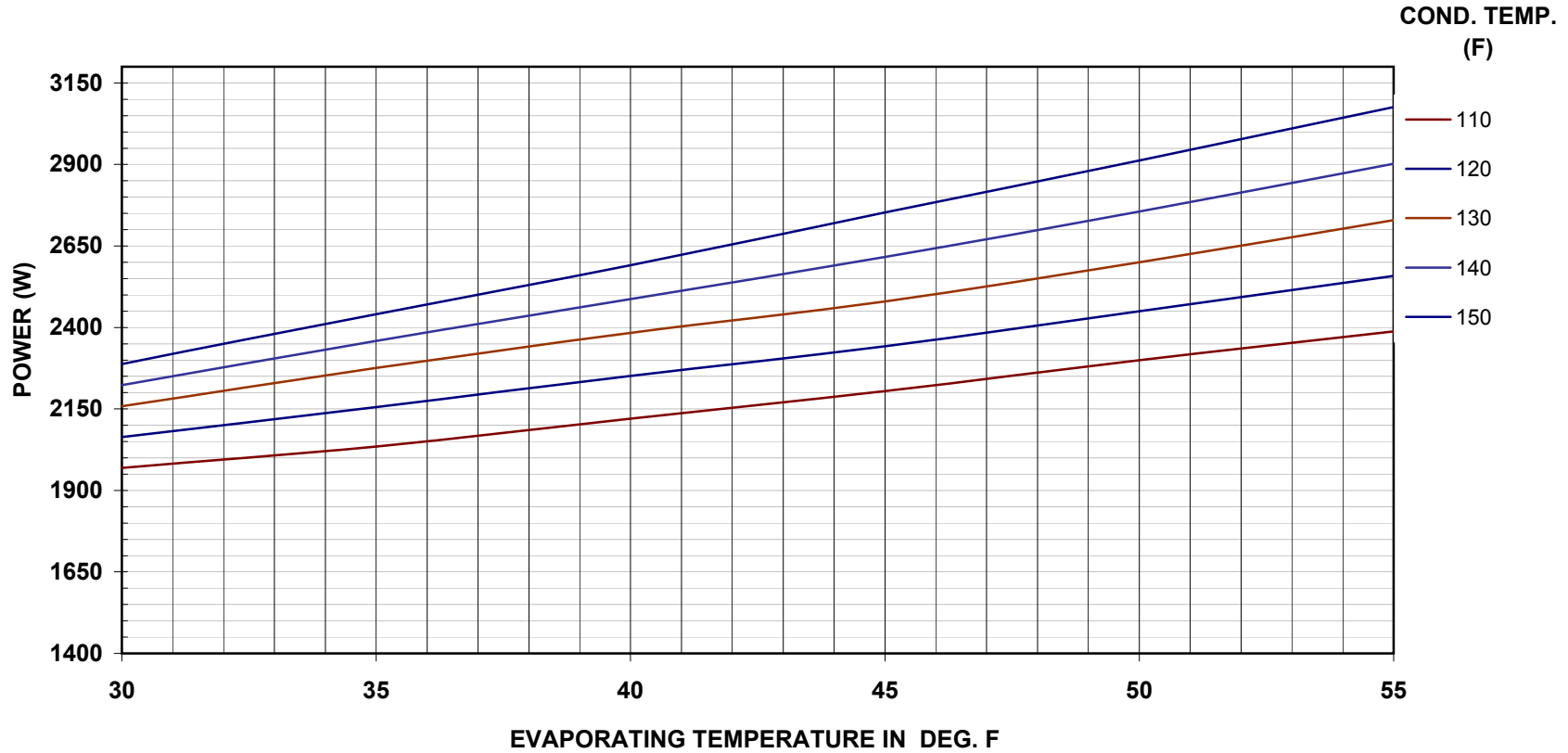


Tecumseh Products India Pvt. Limited - Hyderabad



PERFORMANCE CURVES FOR AWZ 5524EXN COMPRESSOR

Application : HBP Refrigerent : R-22 Voltage : 230V
Frequency : 50 Hz Ambient Temp : 95°F Liquid Sub Cooled : 115°F
Compr.Cooling : 425 CFM Return Gas Temp : 95°F

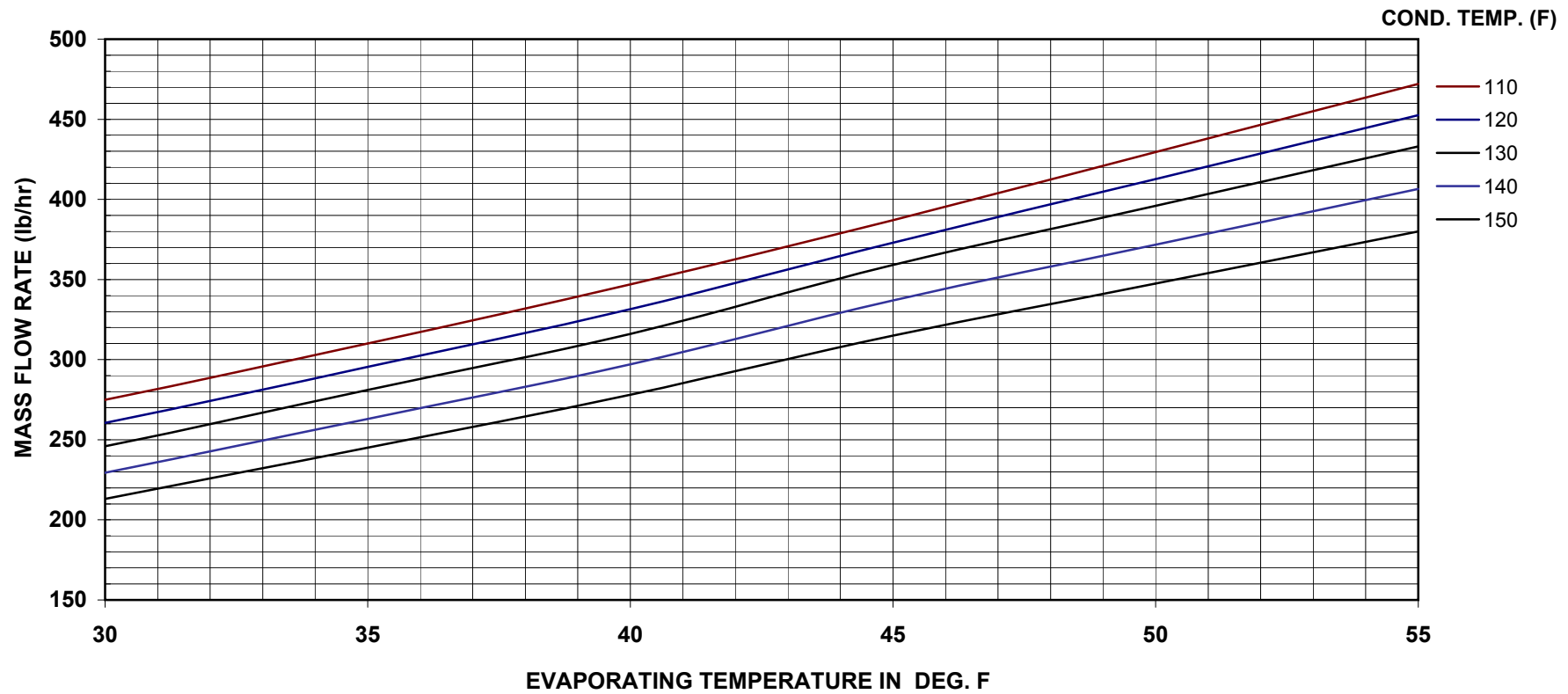


Tecumseh Products India Pvt. Limited - Hyderabad



PERFORMANCE CURVES FOR AWZ 5524EXN COMPRESSOR

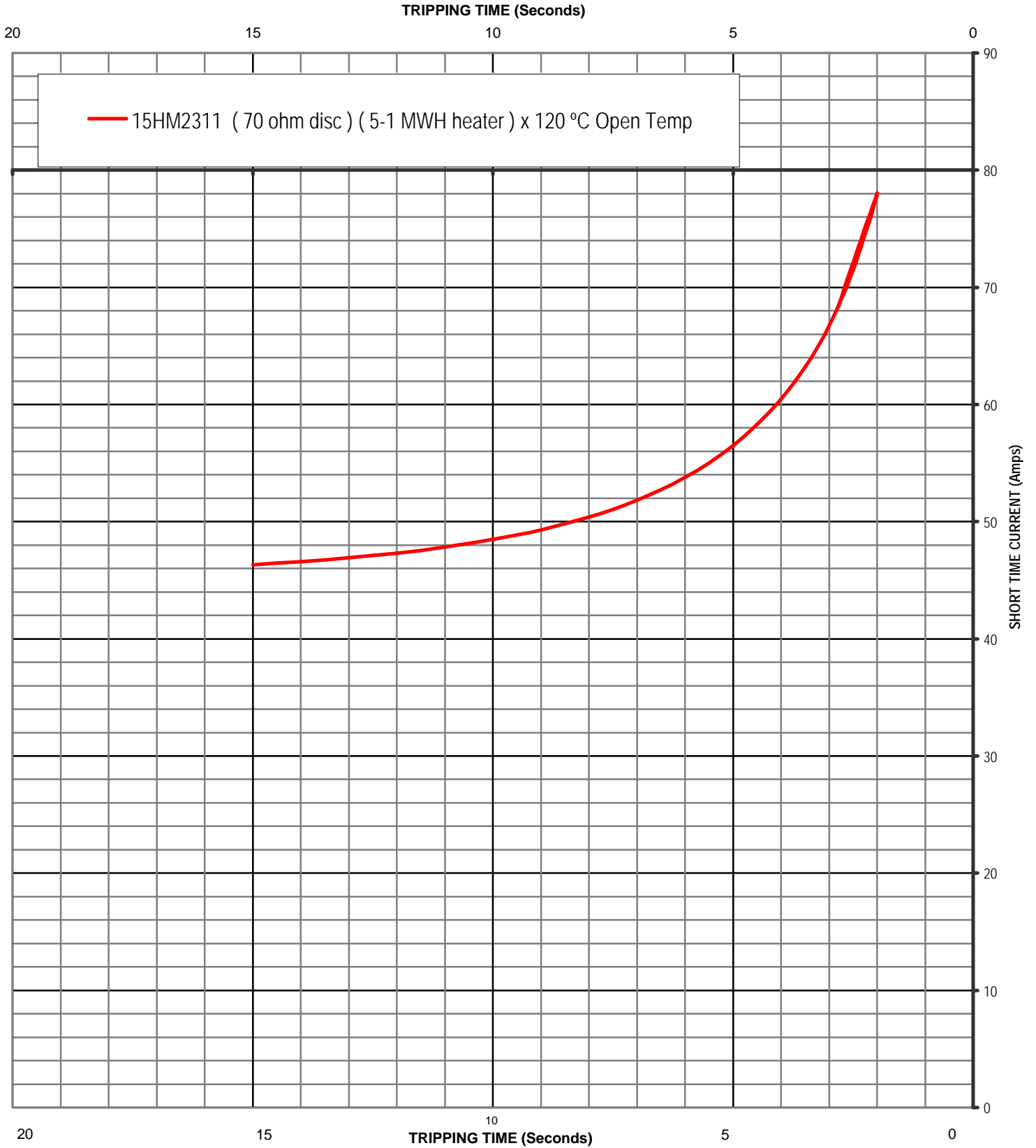
Application : HBP Refrigerant : R-22 Voltage : 230V
Frequency : 50 Hz Ambient Temp : 95°F Liquid Sub Cooled : 115°F
Compr.Cooling : 425 CFM Return Gas Temp : 95°F



15HM MOTOR PROTECTOR

SHORT TIME CURVES

Average First Cycle Tripping Time VS. Current In 25 °C Ambient (Approximate).
To Be Used Only For Selecting Samples For Motor Verification Test.

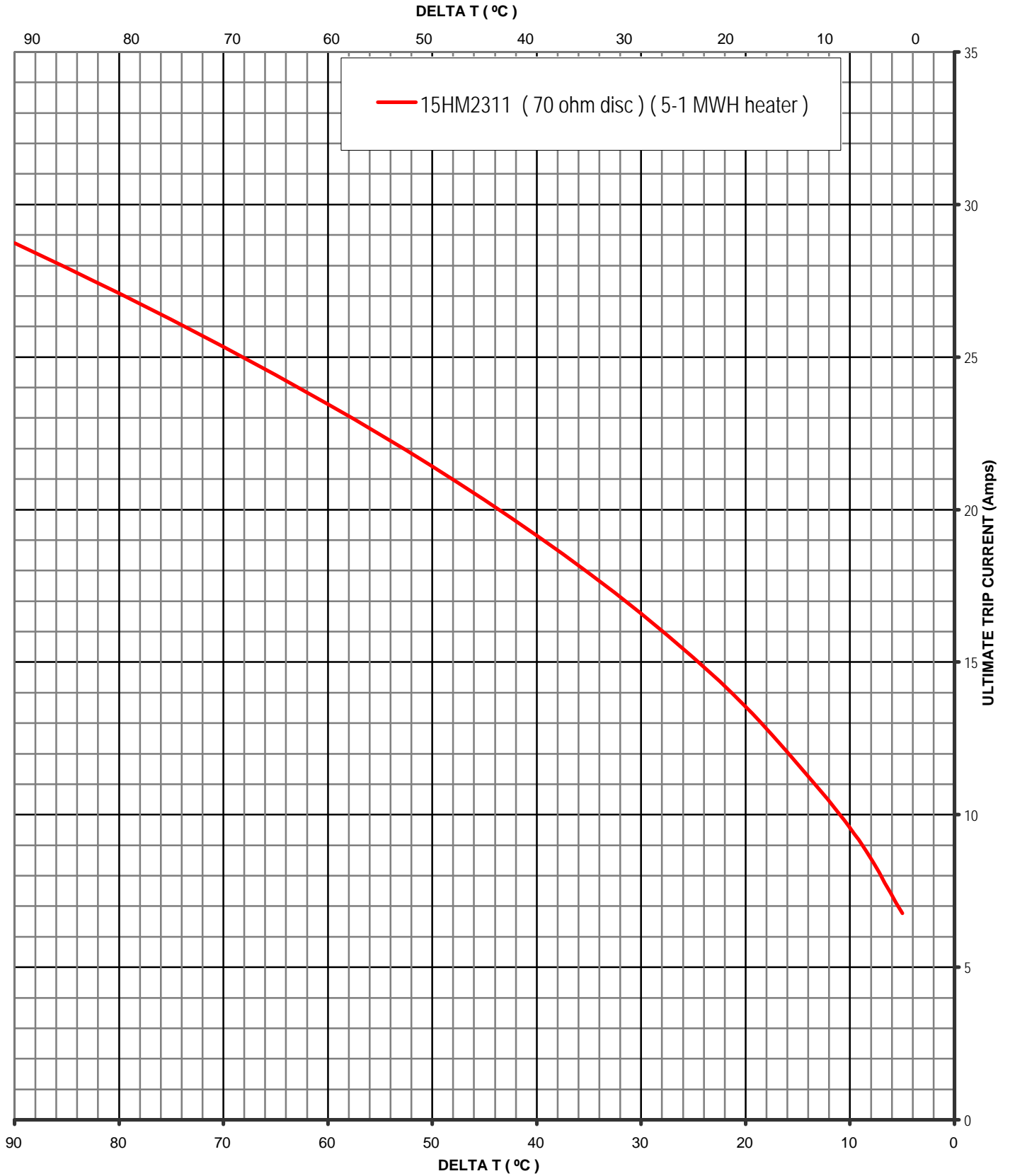


15HM2311 (70 ohm disc) (5-1 MWH heater) x 120 °C Open Temp

15HM MOTOR PROTECTOR

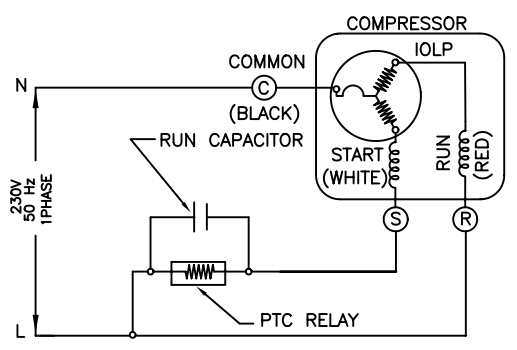
ULTIMATE TRIP CURVES

Ultimate Trip Current VS. Protector Ambient Temperature (Approximate).
To Be Used Only For Selecting Samples For Motor Verification Test.

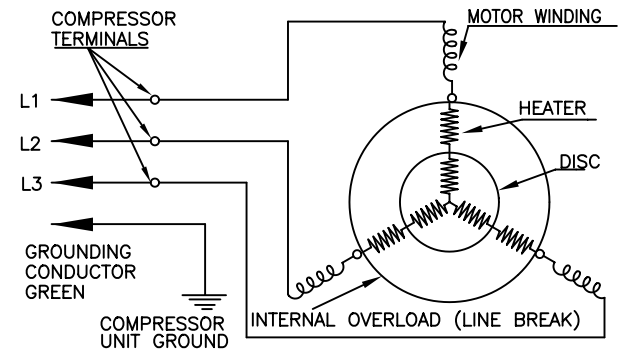


DRAWING NO.
AWX-3383-00

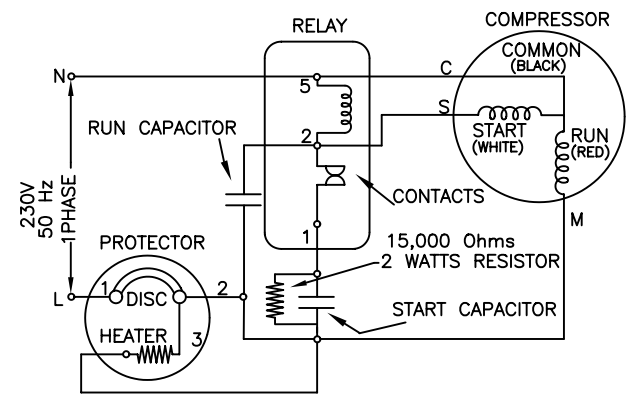
WIRING DIAGRAM - PTCS-CR CIRCUIT



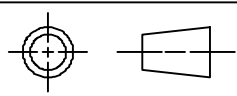
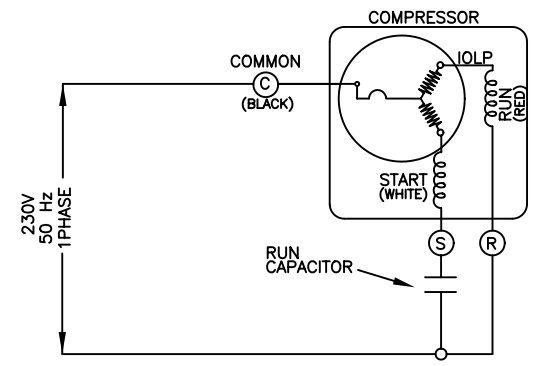
WIRING DIAGRAM - 3 PH



WIRING DIAGRAM - CSR CIRCUIT



WIRING DIAGRAM - PSC CIRCUIT



TOLERANCE	OPEN	3 PL. DEC	4 PL. DEC
LINEAR	---		
ANGULAR			

Q.A. SYMBOLS

- ★ = CATEGORY I
- ▲ = CATEGORY II
- = CATEGORY III
- = CATEGORY IV

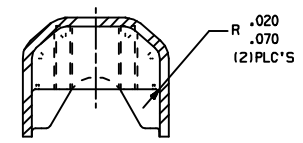
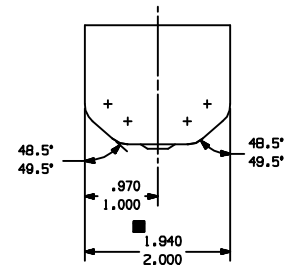
LT	LC	CHANGE	DATE

THIS DRAWING OR PRINT IS THE PROPERTY OF TECUMSEH PRODUCTS INDIA LTD. (TECUMSEH) AND CONTAINS PROPRIETARY AND CONFIDENTIAL INFORMATION BELONGING TO TECUMSEH. IT IS MADE AVAILABLE TO THE RECIPIENT UNDER THE FOLLOWING SPECIFIC CONDITION: THAT NEITHER IT NOR THE INFORMATION CONTAINED THEREIN OR DISCLOSED THEREIN SHALL BE DISCLOSED OR MADE AVAILABLE TO ANY OTHER PERSON, FIRM, BUSINESS AND/OR ORGANIZATION WITHOUT THE WRITTEN CONSENT OF TECUMSEH. PRIOR EXPRESS AND SPECIFIC WRITTEN CONSENT AND (IV) THIS DRAWING OR PRINT SHALL BE RETURNED TO TECUMSEH PRODUCTS INDIA LTD. IMMEDIATELY AFTER SUCH REQUEST IS MADE.

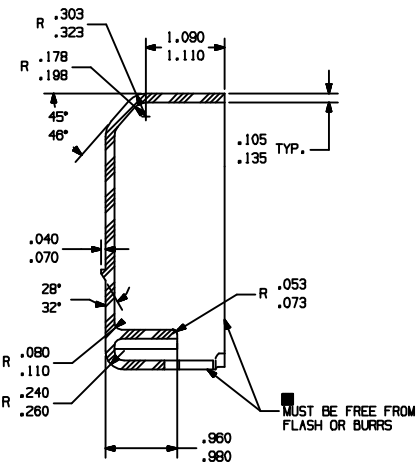
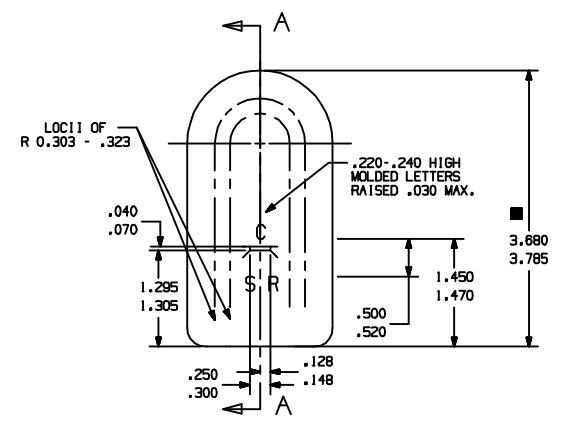
DIS.CODE	NAME				ELECTRICAL WIRING DIAGRAM	
DWN. SEKHAR 09SEP04	CK. G.N.R	APR.	SCALE NTS	THIS PRINT SUPERSEDES ALL PRINTS PRIOR TO		
MATERIAL	TECUMSEH PRODUCTS INDIA LTD. HYDERABAD, INDIA				DRAWING NO. AWX-3383-00	

NOTES:

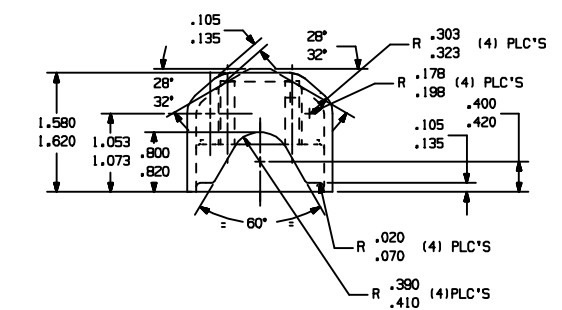
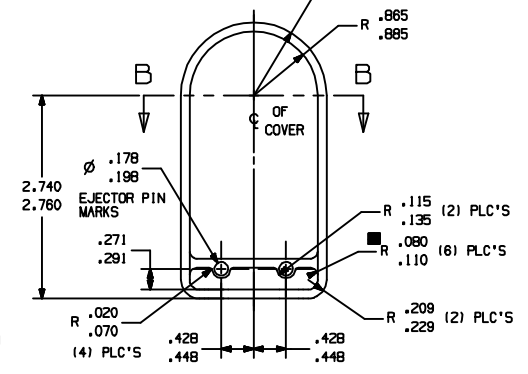
1. SEE T.P.CO. SPEC. #H-101.
2. COLOR - BLACK.
3. MATERIAL - PLASTIGAGE CORP. FIBER GLASS REINFORCED POLYESTER (BLACK COMPOUND) U.L. RECOGNIZED HETHER LITE 802-5574.
4. ALT. MATL. - AMERICAN CYANAMID CO. GLASS REINFORCED ALKYD MOLDING (BLACK) COMPOUND U.L. RECOGNIZED COMPOUND "GLASKYD", 3001G OR INDUSTRIAL DIELECTRICS MAT'L. DESIGNATION P. 5003 FR (MOLDER GREAT LAKES PLASTICS INC.)
5. ALT. MATERIAL : DEV1 POLYMERS DOUGH MOLDING COMPOUND U.L. RECOGNIZED "FLODOMAT" #5585/30
6. ALT. MATERIALS : NORYL PX8406N (GE) -UL APPROVED
7. VENDOR MUST SHOW MATL. DESIGNATION ON OUTSIDE OF SHIPPING CONTAINER.
8. VENDOR SHOULD UNDERGO UL'S MOLDER PROGRAM FOR PLASTICS



SECTION B - B



SECTION A - A



3D, UG-NX

Q.A. SYMBOLS

- AW = CATEGORY I
- ▲ = CATEGORY II
- = CATEGORY III
- = CATEGORY IV



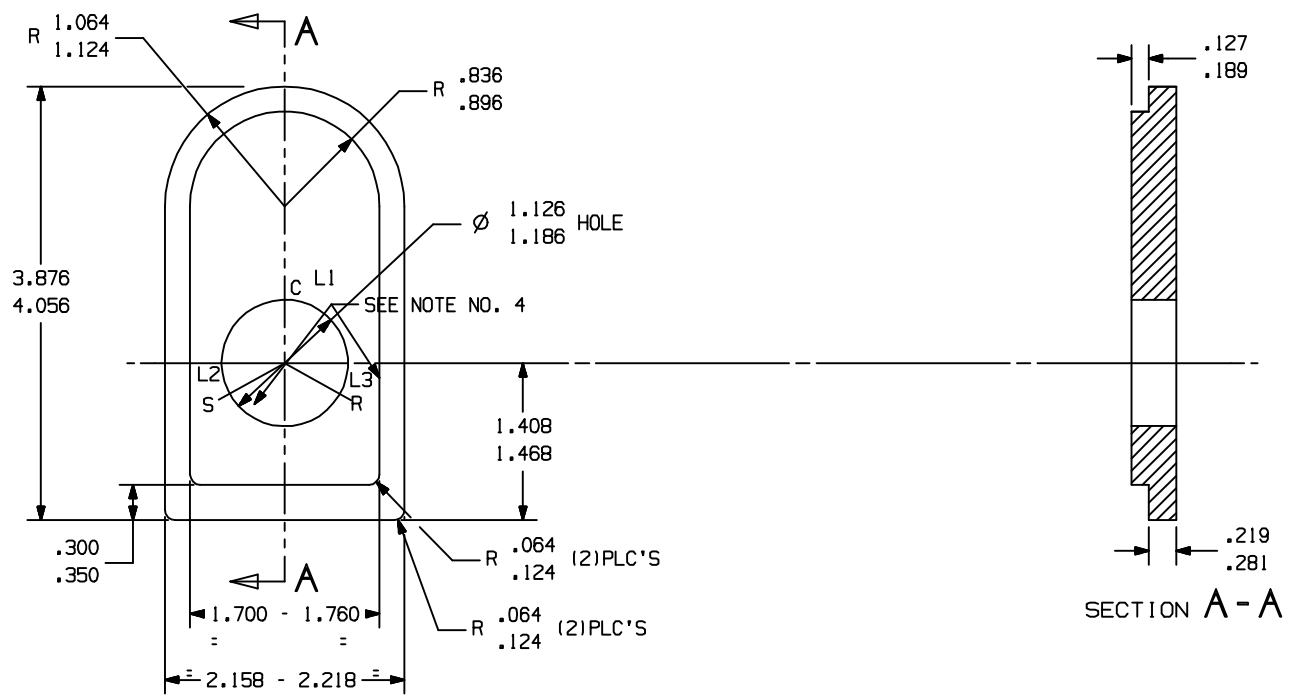
TOLERANCE OPEN/PL DEC. 3 PL DEC. 4 PL DEC.
LINEAR
ANGULAR

REV	DATE	BY	CHKD	DESCRIPTION
1	10/10/2018	SPM	SPM	INITIAL RELEASE
2	10/10/2018	SPM	SPM	CHANGED
3	10/10/2018	SPM	SPM	MODIFIED
4	10/10/2018	SPM	SPM	REDESIGNED

DIS. CODE	NAME
---	PROTECTIVE COVER
DWL	SPMANI
OK	02AUG03
APL	ON FILE
SCALE	1:1
TECUMSEH PRODUCTS INDIA PVT.LTD.	
HYDERABAD, INDIA	
MATERIAL	SEE NOTES

DRAWING NO. AWX-2079-02

DRAWING NO.
AWX-2078-00



NOTES:

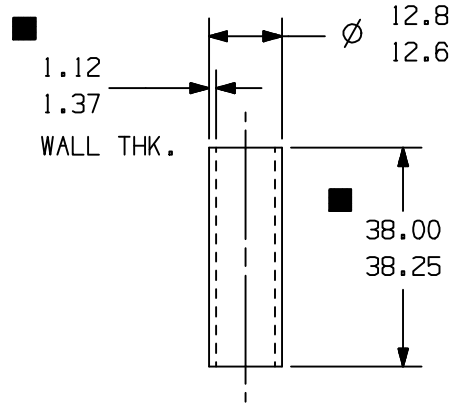
1. SEE T.P.Co. SPEC. NO. E-75 FOR STORAGE
2. VENDOR MUST SHOW MATERIAL DESIGNATION ON, OUTSIDE OF SHIPPING CONTAINER
3. MATERIAL- RUBATEX R425 N (OR) NEOPRENE
ALT. MATERIAL : AMERICAN NATIONAL RUBBER CO. -4219 N
ALT. MATERIAL -UNIROYAL INSOLITE TYPE IV2
4. 3/16 HIGH LETTER AS SHOWN 3-PLACES USING DERUSTO MAINUTE
FINISH HIGLOSS SPEED FINISH D-25 ALUMINUM
5. MATERIAL DENSITY = 30 TO 40 PCF

Q.A. SYMBOLS			
★	=	CATEGORY I	
▲	=	CATEGORY II	
■	=	CATEGORY III	
□	=	CATEGORY IV	

TOLERANCE	OPEN/2PL.DEC.	3 PL.DEC.	4 PL.DEC.
LINEAR	-	-	-
ANGULAR	±1°		

REVISION IN UNIGRAPHICS	MATERIAL	DATE	NAME				
LT/LC	CHANGE		GASKET FOR PROTECTIVE COVER				
<small>THIS DRAWING OR PRINT SHALL BE THE PROPERTY OF T.P.CO. AND CONTAINS INFORMATION BELONGING TO T.P.CO. IT IS TO BE KEPT IN CONFIDENCE AND NOT TO BE DISCLOSED OR MADE AVAILABLE TO ANY OTHER PERSON OR ORGANIZATION WITHOUT THE WRITTEN CONSENT OF T.P.CO. ANY REPRODUCTION OR TRANSMISSION OF THIS DRAWING OR PRINT WITHOUT THE WRITTEN CONSENT OF T.P.CO. IS STRICTLY PROHIBITED. T.P.CO. ACCEPTS NO LIABILITY FOR ANY LOSS OR DAMAGE TO MATERIALS OR EQUIPMENT CAUSED BY THE USE OF THIS DRAWING OR PRINT. T.P.CO. SHALL BE HELD RESPONSIBLE FOR THE ACCURACY OF THE INFORMATION CONTAINED HEREIN. ANY CHANGES TO THIS DRAWING OR PRINT SHALL BE REQUESTED BY THE RECIPIENT BY THE DATE LISTED IN ANY COMMENTS AND SHALL BE RETURNED TO THE RECIPIENT WITHIN 10 BUSINESS DAYS OF THE DATE LISTED. ANY CHANGES TO THIS DRAWING OR PRINT SHALL BE REQUESTED IMMEDIATELY AFTER SUCH REQUEST IS MADE.</small>			DWG. NO.	CK.	APR.	SCALE	THIS PRINT SUPERSEDES ALL PRINTS PRIOR TO
			SPMAN1 11JUN03	ON FILE	ON FILE	1:1	
TECUMSEH PRODUCTS INDIA PVT.LTD. HYDERABAD, INDIA							DRAWING NO.
MATERIAL							AWX-2078-00
REFER NOTES							

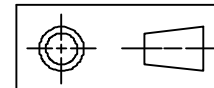
DRAWING NO.
AWX-2026-04



NOTES:

1. TO BE FREE FROM RUST & BURRS.
2. TREATMENT: ZINC PASSIVATED 0.005 MM MIN.
3. I.D. MUST ACCEPT A \varnothing 9.68 GAUGE PIN.
4. ALL DIMENSIONS ARE IN MM.

Q.A. SYMBOLS	
★	= CATEGORY I
▲	= CATEGORY II
■	= CATEGORY III
□	= CATEGORY IV

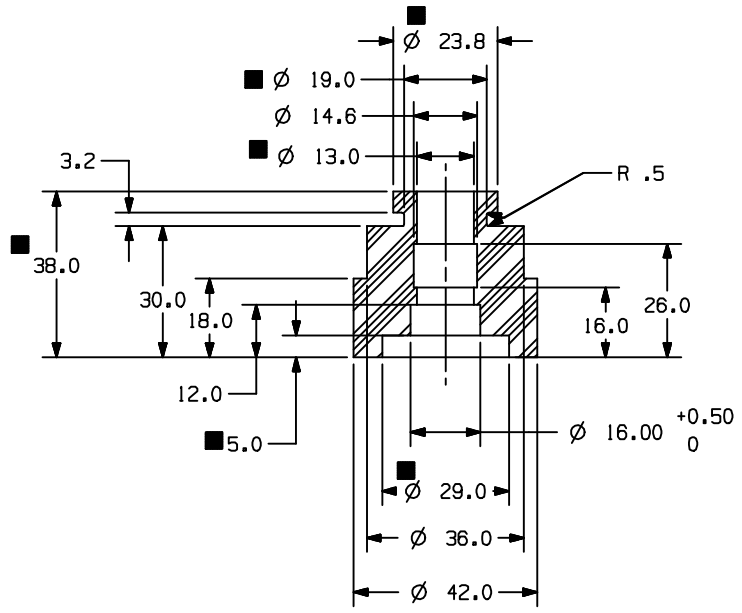
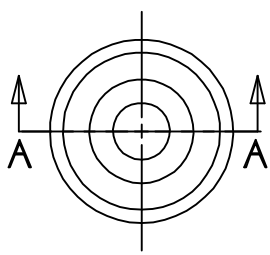


TOLERANCE	OPEN/2PL.DEC.	3 PL.DEC.	4 PL.DEC.
LINEAR	-	-	-
ANGULAR	± 1°		

LT	LC	CHANGE	DATE	DIS.CODE	NAME				THIS PRINT SUPERSEDES ALL PRINTS PRIOR TO
		REDRAWN IN MURALI UNIGRAPHICS 05MAR04		--	GROMMET SLEEVE				
					DWN. VENU 10APRO2	CK. ONFILE	APR. --	SCALE 1:1	
					TECUMSEH PRODUCTS INDIA PVT.LTD. HYDERABAD, INDIA				DRAWING NO.
					MATERIAL WELDED STEEL TUBE CEW AS PER IS: 3074				AWX-2026-04

THIS DRAWING OR PRINT (I) IS THE PROPERTY OF TECUMSEH PRODUCTS COMPANY AND CONTAINS INFORMATION BELONGING TO TECUMSEH. (I) IS MADE AVAILABLE TO THE SPECIFIC CONDITION THAT NEITHER IT NOR THE INFORMATION CONTAINED THEREIN IS TO BE REPRODUCED OR USED IN ANY MANNER WITHOUT THE EXPRESS AND WRITTEN CONSENT OF TECUMSEH. ONLY AS EXPRESSLY AND SPECIFICALLY APPROVED IN WRITING BY TECUMSEH AND NOT IN ANY OTHER MANNER OR TO ANY EXTENT WITHOUT TECUMSEH'S PRIOR EXPRESS AND WRITTEN CONSENT. THE RECIPIENT SHALL BE RETURNED BY THE RECIPIENT THEREOF TO TECUMSEH AT THE ADDRESS MENTIONED PROMPTLY AFTER SUCH AS REQUEST IS MADE. DO NOT SCALE THIS DRAWING. MATERIALS MUST NOT BE MAGNETIZED AS RECEIVED OR AT COMPRESSOR ASSEMBLY.

DRAWING NO.
AWX-2025-03



MATERIAL : 50% SBR + 50% NATURAL RUBBER
CLASS & TYPE AA AS PER H-110

- PROPERTIES:
- HARDNESS : 37 DHN ± 3
 - TENSILE STRENGTH : 1015 PSI MIN.
 - ELONGATION : 400% MIN.
 - AFTER AGING AT 70° C FOR 70 HRS
 - HARDNESS: ± 15
 - TENSILE STRENGTH: ± 30%
 - ELONGATION: - 50% MAX
 - COMPRESSION TEST: 50% MAX. 22HRS AT 70° C
 - COLOUR : BLACK
 - SPECIFIC GRAVITY 1.2±0.1

- NOTES:
- TO BE FREE FROM FLASH
 - ALL DIMENSIONS ARE IN MM

SECTION A - A

Q.A. SYMBOLS	
★	= CATEGORY I
▲	= CATEGORY II
■	= CATEGORY III
□	= CATEGORY IV

TOLERANCE	AW		
	OPEN/2PL.DEC.	3 PL.DEC.	4 PL.DEC.
LINEAR	±0.010	-	-
ANGULAR	±1°	-	-

REVISIONS NO. DATE BY	DATE	DESCRIPTION	DIS. CODE				NAME GROMMET
	DATE	DESCRIPTION	DIS. CODE				
	DATE	DESCRIPTION	DIS. CODE				
	DATE	DESCRIPTION	DIS. CODE				
DRW. VENU 12APR02	CK. --	APR. --	SCALE 1:1	THIS PRINT SUPERSEDES ALL PRINTS PRIOR TO			
TECUMSEH PRODUCTS INDIA LTD. HYDERABAD, INDIA				DRAWING NO. AWX-2025-03			
MATERIAL REF. ABOVE							

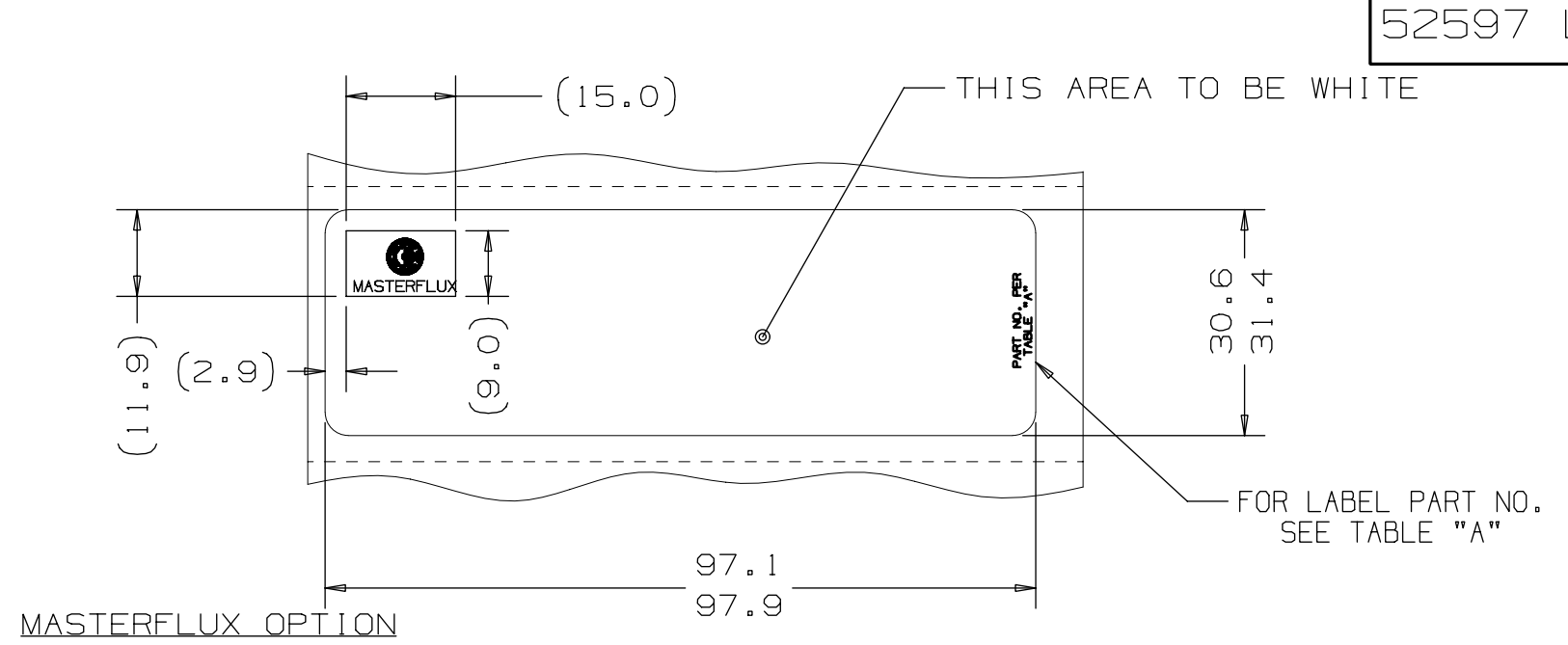
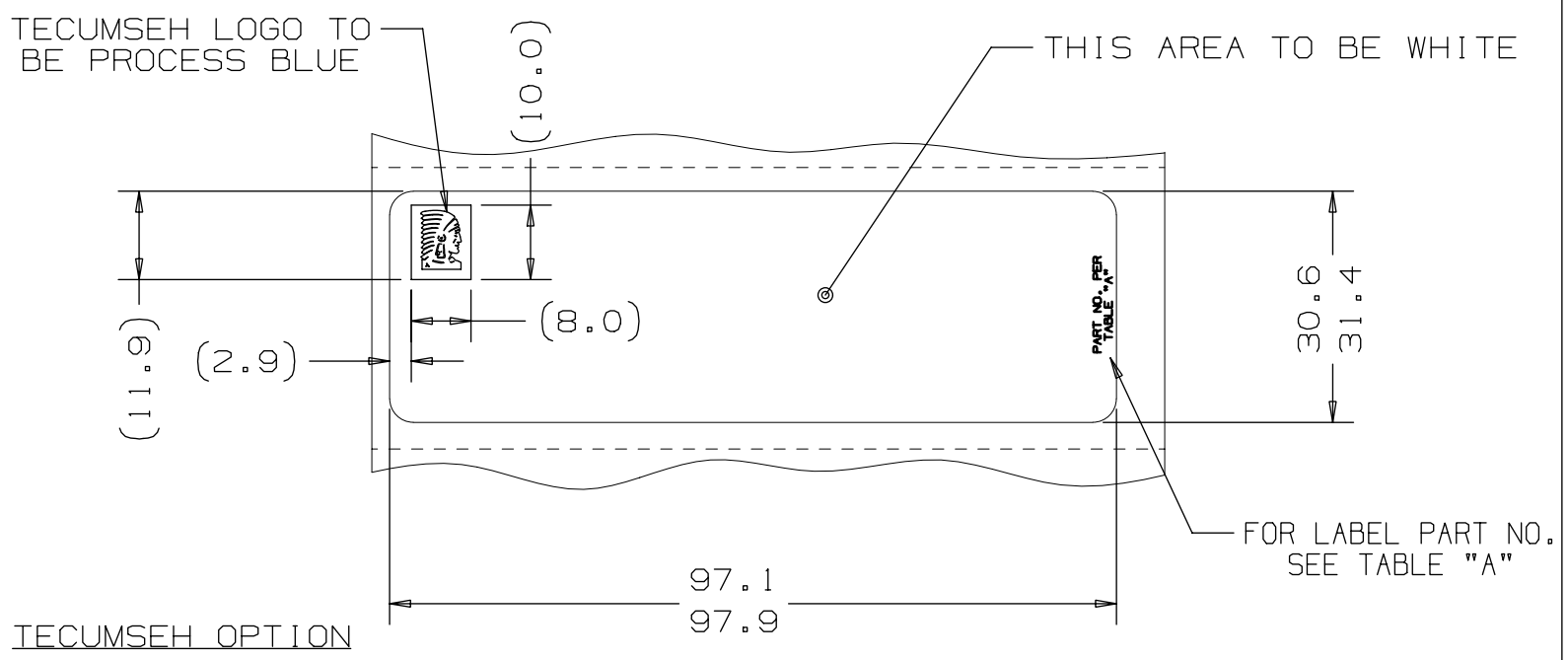
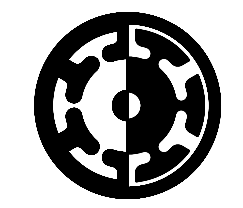


TABLE "A"

MFG LOCATION	PART NO.	LABEL MATERIAL	LOGO DWG. No.
USA/TdB	52597B	THERMLFILM PM200W - TC - 387 WITH L-23 ADHESIVE - 103mm WIDE - 40# SILICON.	MD893
TEC EUROPE	52597D	POLYESTER 7813 SILVER WITH 300 ADHESIVE MADE BY 3M AND THERMLFILM MM300 SATIN SILVER TC-712 WITH V-660 ADHESIVE MADE BY FLEXCON	MD893
TEC INDIA	52597E	3M 7385 TAMPER-INDICATING WITH #320 "HIGH TENACITY" ACRYLIC ADHESIVE - OR THERMLFILM PM200W - TC - 387 WITH L-23 ADHESIVE - 103mm WIDE - 40# SILICON.	MD893
MASTERFLUX	52547F	THERMLFILM PM200W - TC - 387 WITH L-23 ADHESIVE - 103mm WIDE - 40# SILICON.	MD892



TECUMSEH LOGO
SCALE 5:1
REF. DRAWING #MD893



MASTERFLUX

MASTERFLUX LOGO
SCALE 5:1
REF. DRAWING #MD892

- NOTES--
- PART MUST BE APPROVED PER T.P. Co. GLOBAL SPEC. #07.
 - FOR LABEL MATERIAL, PRINTER, PRINTER RIBBONS SEE TABLE "A"
 - PACKAGING TO BE MARKED WITH T.P.Co. PART NUMBER, 76.2mm I.D. x 82.6mm O.D.
 - DIECUT LABELS WOUND ON CORES OF 76.2mm I.D. x 82.6mm O.D.
 - FOR LOGO STYLE, FONT, AND COLORS SEE TABLE "A".

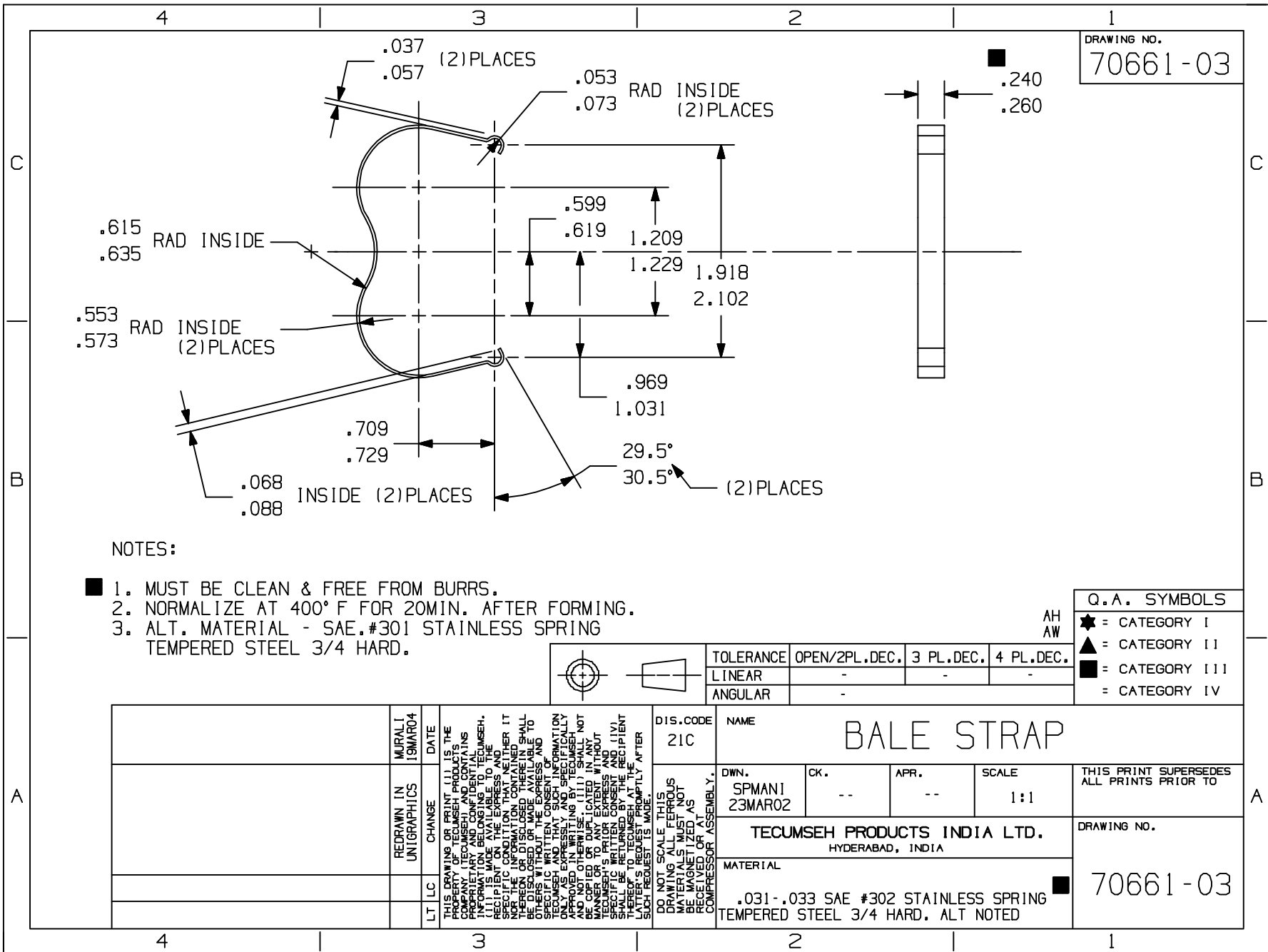
METRIC	
Q.A. SYMBOLS	
☆	= CATEGORY I
△	= CATEGORY II
□	= CATEGORY III
○	= CATEGORY IV

ALL

		REEVES 20AUG03			DATE			DIS.CODE		NAME		COMPRESSOR SERIAL LABEL	
		#241521-030 DWG.# MD893 WAS MC893	ADDED REFERENCE NOTE TO LOGOS	REEVES 20AUG03	DTD 21JUL03			DWN. 12JUN03	CK. ON FILE	APR. ON FILE	SCALE 1=1	THIS PRINT SUPERSEDES ALL PRINTS PRIOR TO	
		3B	2C	#241521-026 ADDED ALT. MATERIAL FOR 52597E	DTD 21JUL03			TECUMSEH PRODUCTS CO. TECUMSEH, MICHIGAN				DRAWING NO. 52597 LTR	
		E	D	#241521-015 ADDED 52597F	DTD 21JUL03			MATERIAL		NOTED			
			C	#241521-023 ADDED 52597E	DTD 21JUL03			DRAWING No.		MD888-07		REVISION LEVEL: REL	
			B	#241521-020 ADDED TEC. LOGO VIEW DIMENSIONS	DTD 21JUL03								
			A	REL #241521-013	DATE								

THIS DRAWING OR PRINT (1) IS THE PROPERTY OF TECUMSEH PRODUCTS COMPANY (TECUMSEH) AND CONTAINS PROPRIETARY AND CONFIDENTIAL INFORMATION BELONGING TO TECUMSEH. IT IS TO BE KEPT IN STRICT CONFIDENCE AND NOT TO BE LOANED, REPRODUCED, COPIED, OR DISCLOSED TO ANY OTHER PERSON OR ENTITY WITHOUT THE WRITTEN CONSENT OF TECUMSEH. ANY INFORMATION OBTAINED HEREIN IS TO BE USED ONLY FOR THE PURPOSES SPECIFICALLY STATED IN THIS DRAWING AND IS NOT TO BE USED FOR ANY OTHER PURPOSE. ANY INFORMATION OBTAINED HEREIN IS TO BE RETURNED TO TECUMSEH PROMPTLY UPON REQUEST.

DO NOT SCALE THIS DRAWING. ALL DIMENSIONS MUST BE TAKEN FROM THE ORIGINAL DRAWING OR AS SPECIFIED BY THE DIMENSIONS LISTED THEREON.



NOTES:

- 1. MUST BE CLEAN & FREE FROM BURRS.
- 2. NORMALIZE AT 400° F FOR 20MIN. AFTER FORMING.
- 3. ALT. MATERIAL - SAE.#301 STAINLESS SPRING TEMPERED STEEL 3/4 HARD.

Q.A. SYMBOLS	
★	= CATEGORY I
▲	= CATEGORY II
■	= CATEGORY III
□	= CATEGORY IV

	TOLERANCE		
	OPEN/2PL.DEC.	3 PL.DEC.	4 PL.DEC.
LINEAR	-	-	-
ANGULAR	-	-	-

THIS DRAWING OR PRINT (I) IS THE PROPERTY OF TECUMSEH PRODUCTS AND CONTAINS PROPRIETARY AND CONFIDENTIAL INFORMATION BELONGING TO TECUMSEH. RECIPIENT FOR THE EXPRESS AND SPECIFIC CONDITION THAT NEITHER IT NOR THE INFORMATION CONTAINED SHALL BE DISCLOSED OR MADE AVAILABLE TO OTHERS WITHOUT THE EXPRESS AND SPECIFIC WRITTEN CONSENT OF TECUMSEH. APPROVED IN WRITING BY TECUMSEH AND NOT TO BE REPRODUCED IN ANY MANNER OR TO ANY EXTENT WITHOUT TECUMSEH'S PRIOR EXPRESS AND WRITTEN PERMISSION. RECIPIENT SHALL BE RETURNED BY THE RECIPIENT TO TECUMSEH AT THE LATTERS REQUEST PROMPTLY AFTER SUCH REQUEST IS MADE.	DIS.CODE 21C	NAME BALE STRAP						
	REDRAWN IN UNIGRAPHICS	MURALI 19MAR04	DATE	DWN. SPMAN1 23MAR02	CK. --	APR. --	SCALE 1:1	THIS PRINT SUPERSEDES ALL PRINTS PRIOR TO
	LT	LC	CHANGE	TECUMSEH PRODUCTS INDIA LTD. HYDERABAD, INDIA			DRAWING NO.	
	MATERIAL .031-.033 SAE #302 STAINLESS SPRING TEMPERED STEEL 3/4 HARD. ALT NOTED						70661-03	