



TECUMSEH PRODUCTS INDIA PVT. LTD.

TECHNICAL SPECIFICATIONS

AWZ5520EXN
(208/230V - 1Ph - 60Hz)



AWZ5520EXN

208/230V-60Hz-1Ph

PERFORMANCE SPECIFICATION:

Model	AWZ5520EXN	
Bill of Material	4 LEG -STANDARD	AWZ5520EXN0001
	3 LEG - STANDARD	AWZ5520EXN0003
	4 LEG -SHORT	AWZ5520EXN0002
	3 LEG - SHORT	-
Application	Room Air conditioning & Heat pump	
Refrigerant	R – 22	
Electrical Rating	230/208 VOLTS, 60 Hz, Single Phase	
Capacity – (Btu / Hr)	20400	
(Kcal / Hr)	5140	
(Watts)	5979	
Input Power (Watts)	2075	
Input Current (Amps)	9.7	
Efficiency (Btu / W-Hr)	9.8	
(Kcal / W-Hr)	2.48	
(Watts / Watts)	2.88	

Note: Performance Tolerance - $\pm 5\%$

RATING CONDITIONS (ASHRAE-T)

Evaporator Temperature	45 °F	7.2 °C
Condensing Temperature	130 °F	54.4 °C
Return Gas Temperature	95 °F	35 °C
Liquid temperature	115 °F	46 °C
Ambient temperature	95 °F	35 °C



AWZ5520EXN

208/230V-60Hz-1Ph

COMPRESSOR SPECIFICATION

Compressor Type	Hermetic Reciprocating
Suction Scheme	Low side dome
Number of Cylinders	Two
Displacement (in ³ / Rev)	2.415
(cc / Rev)	39.6
(CFH)	291.8
(CMH)	8.26
Oil Charge (Initial FL. OZ)	38 (Cold)
(Refill FL. OZ)	34 (Cold), 36 (Hot)
(Initial CC)	1,125 (Cold)
(Refill CC)	1,006 (Cold), 1,066 (Hot)
Oil Specification	SUNISO 3GS
Oil circulation rate (lb / hour)	1.56
(Grams / hour)	707
Refrigerant charge (lbs)	4.23
(KG)	1.92
Internal Pressure Relief Valve Operating Differential (PSI)	525 ± 25
(KG / CM ²)	36.75 ±- 1.758
Compressor Weight (lbs with oil)	61.0
(kgs with oil)	27.7
Sound Power Level on kit (dBA)	68 ± 3
Discharge Pressure Pulse (PSI)	0.9 Nominal
Inclination	<= 5°
Compressor Finish	Backed Enamel (Black)



AWZ5520EXN

208/230V-60Hz-1Ph

MOTOR SPECIFICATION:

Motor Type	Permanent Split Capacitor
Nominal output (HP)	2.25
Nominal Voltage (Volts)	60Hz - 208 / 230
Voltage Range (Volts)	60Hz-197-253
Frequency / Phase (Hz / ø)	60 / 1
Number of poles	Two (2)
Nominal speed	3500
Locked rotor current (Amps)	52.0
Rated Load current (Amps)	9.7
Maximum Continuous current (Amps)	15.4
Motor Cooling	Suction Gas
Maximum winding Temperature °F/°C	265/130
Insulation Class (°C)	Class B (130°C)
Motor cu wire enameled class	POLYSTER IMIDE as Base Coat 180°C POLYAMIDE IMIDE as Top Coat 220°C
Winding Resistance	At 68 °F (20 °C)
Main Winding (Ohm)	1.15
Start Winding (Ohm)	3.10
Motor Protector Part Number	15 HM 1459-43
Motor Protector Type	Internal
Opening Temperature (°C)	110
Closing Temperature (°C)	61
Ultimate Trip Current at 86 °C Min (EPA)	
-Main	13.9
-Aux	2.25
First Cycle Trip Current (EPA 25°C)	
3-9 Seconds Main (A)	45
Aux (A)	32



AWZ5520EXN

208/230V-60Hz-1Ph

APPLICATION SPECIFICATION

Discharge Pressure Range (PSI) (KG/CM ²)	143.6 – 464.0 10.1 - 32.63
Suction Pressure Range (PSI) (KG/CM ²)	13.2 – 92.6 0.9 - 6.5
Discharge Pressure Range (PSI) Block Fan Test (KG/CM ²)	580 at 230 Volts 40.78
Compression Ratio (Max)	7.3
Discharge Temperature (°F) (°C)	290 143
Bottom Shell Temperature (°F) (°C)	>= E _T + 35 >= E _T + 19.4
Outdoor / Indoor Conditions (°F) (°C)	67.0 DBT / 57.0 WBT 19.4 DBT / 13.9 WBT
Superheat (°F) (°C)	19.4 10.8
Inclination	<= 5°
Maximum Ambient (°C) At Start Voltage of 198 V	54

PROCESS SPECIFICATION

Moisture Limit (mg)	75 (After Dehydration)
Residue Limit (mg)	Not available for finished compressor
Leak Test Pressure (PSI) (KG/CM ²)	150 10.6
Shell Integrity Test (PSI) (KG/CM ²)	200 14.1
UL Shell Integrity (PSI) (KG/CM ²)	1000 70.4
High Potential Test (Volts) Current Leakage limit (mA)	1500 for One (1) Second 1.3



AWZ5520EXN

208/230V-60Hz-1Ph

APPLICABLE SAFETY STANDARDS

UL File Number	SA707 – VOL 18
UL Class Number	SLIS2, SLI S8
VDE File Number	2311300-2560-0001 / 21796 / FG23 /ES
VDE License Number	40003463

COMPRESSOR ACCESSORIES

Parts Name	Drawing No.	Qty.
Mounting Grommet	AWX – 2025 – 03	1 / Leg
Mounting Sleeve	AWX – 2026 – 04	1 / Leg
Terminal Cover	AWX-2079-02	1
Terminal Cover Gasket	AWX-2078-00	1
Spring Clip (Bale Strap)	70661 – 03	1

COMPRESSOR ACCESSORIES (OPTIONAL)

Parts Name	Part Code / Specifications	Qty.
Run Capacitor (MFD, Volts)	25 MFD, 370 VAC	1
PTC Starting Device (Ohms)	NA	
Start Capacitor (MFD, Volts)(Optional)		
Potential Relay (Optional) Pick up Volts (Hot) Drop-Out Volts (Cold)		
Crank case Heater (TPC / TI) Voltage Limit (Volts) Power Output (Watts)	NA	



AWZ5520EXN

208/230V-60Hz-1Ph

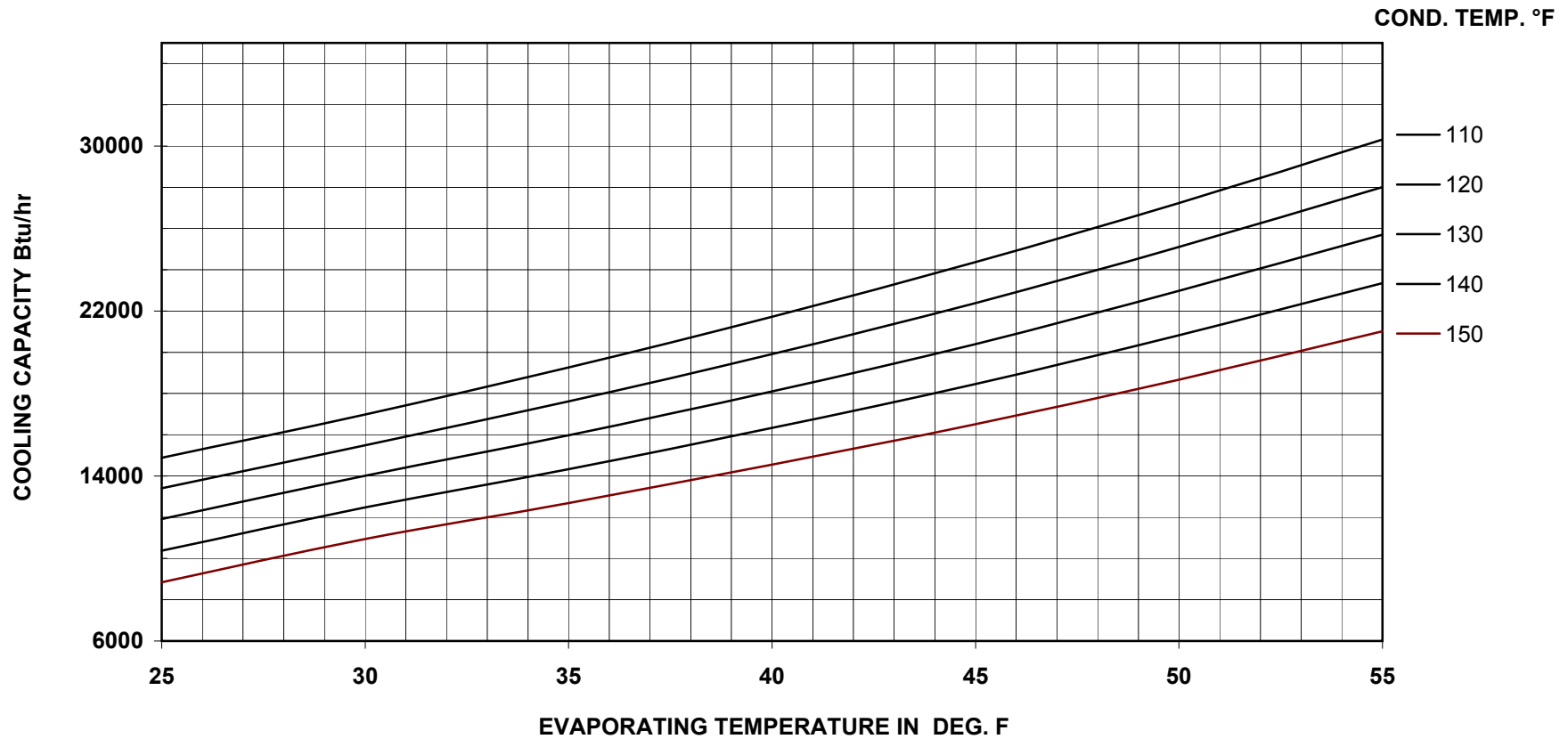
APPLICABLE DRAWINGS

Performance Curves	Cooling Capacity	Enclosed
	Power	Enclosed
	Mass flow	Enclosed
	Current	Enclosed
IOLP curves	Enclosed	
Compressor Sales Drawing	4 LEG -STANDARD	AWX-3151-01
	3 LEG - STANDARD	AWX-2964-01
	4 LEG -SHORT	AWX-3325-00
	3 LEG - SHORT	-
Wiring diagram PSC / PTCS-CR / CSR / 3-PH	AWX-3383-00	
Serial Label	52597E	
Mounting Grommet	AWX – 2025 – 03	
Mounting Sleeve	AWX – 2026 – 04	
Protective Cover	AWX – 2079 – 02	
Gasket for Protective Cover	AWX – 2078 – 00	
Bale Strap	70661 - 03	



COOLING CAPACITY CURVE FOR AWZ5520EXN COMPRESSOR

Application : HBP Refrigerent : R-22 Voltage : 208/230V
Frequency : 60 Hz Ambient Temp : 95°F Liquid Sub Cooled : 115°F
Compr.Cooling : 425 CFM Return Gas Temp : 95°F

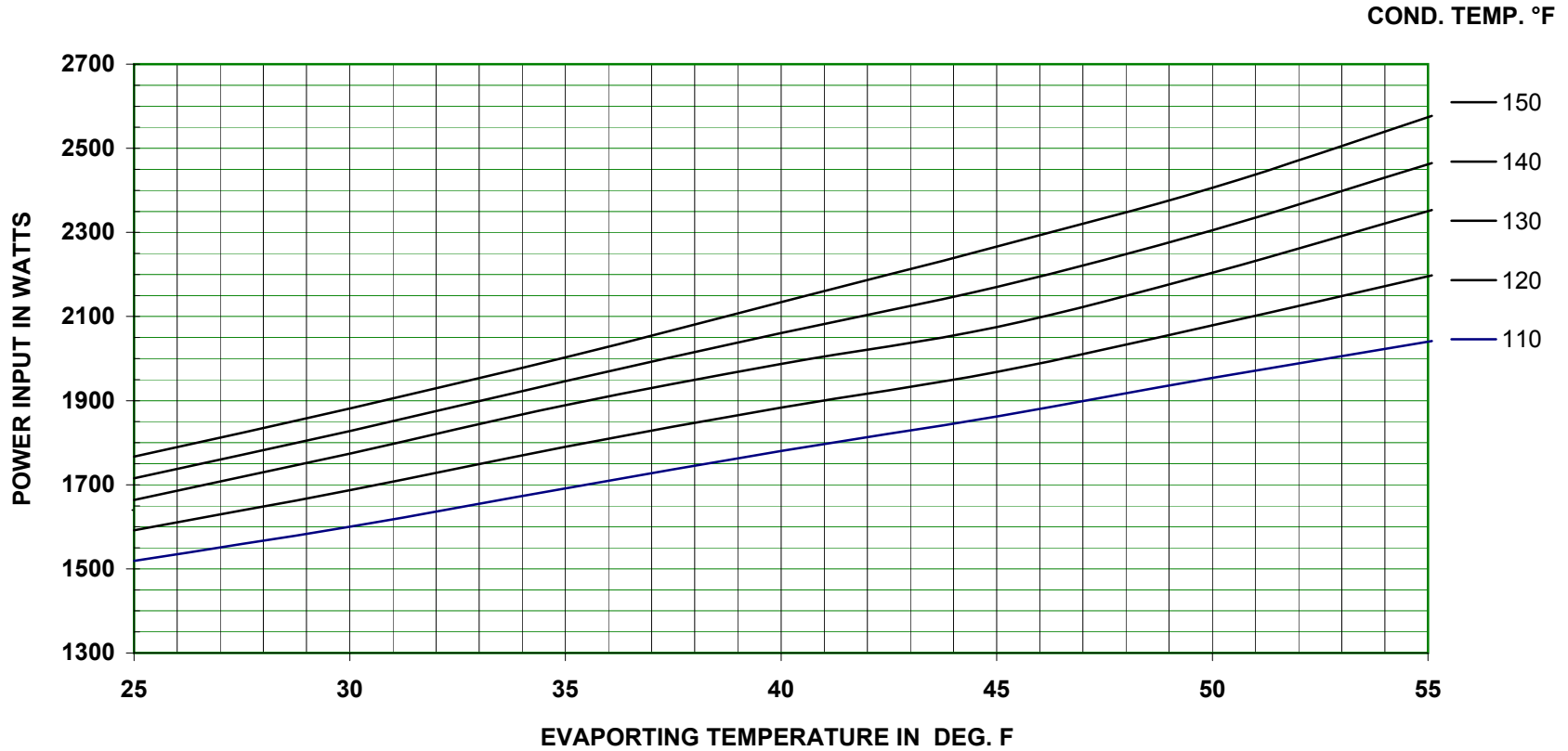


Tecumseh Products India Pvt. Limited - Hyderabad



POWER CURVE FOR AWZ5520EXN COMPRESSOR

Application	: HBP	Refrigerant	: R-22	Voltage	: 208/230V
Frequency	: 60 Hz	Ambient Temp	: 95°F	Liquid Sub Cooled	: 115°F
Compr.Cooling	: 425 CFM	Return Gas Temp	: 95°F		

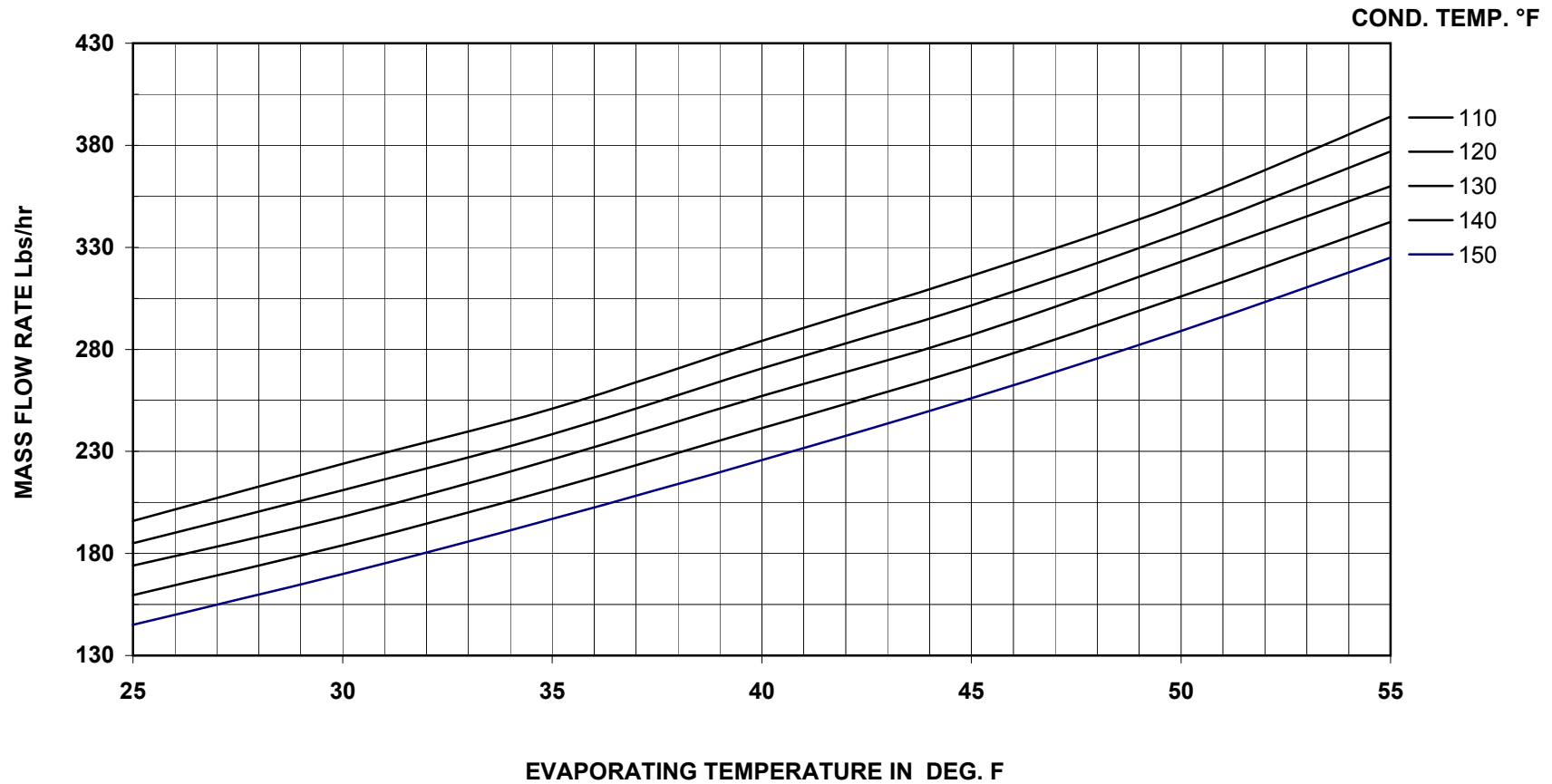


Tecumseh Products India Pvt. Limited - Hyderabad

MASS FLOW CURVE FOR AWZ5520EXN COMPRESSOR



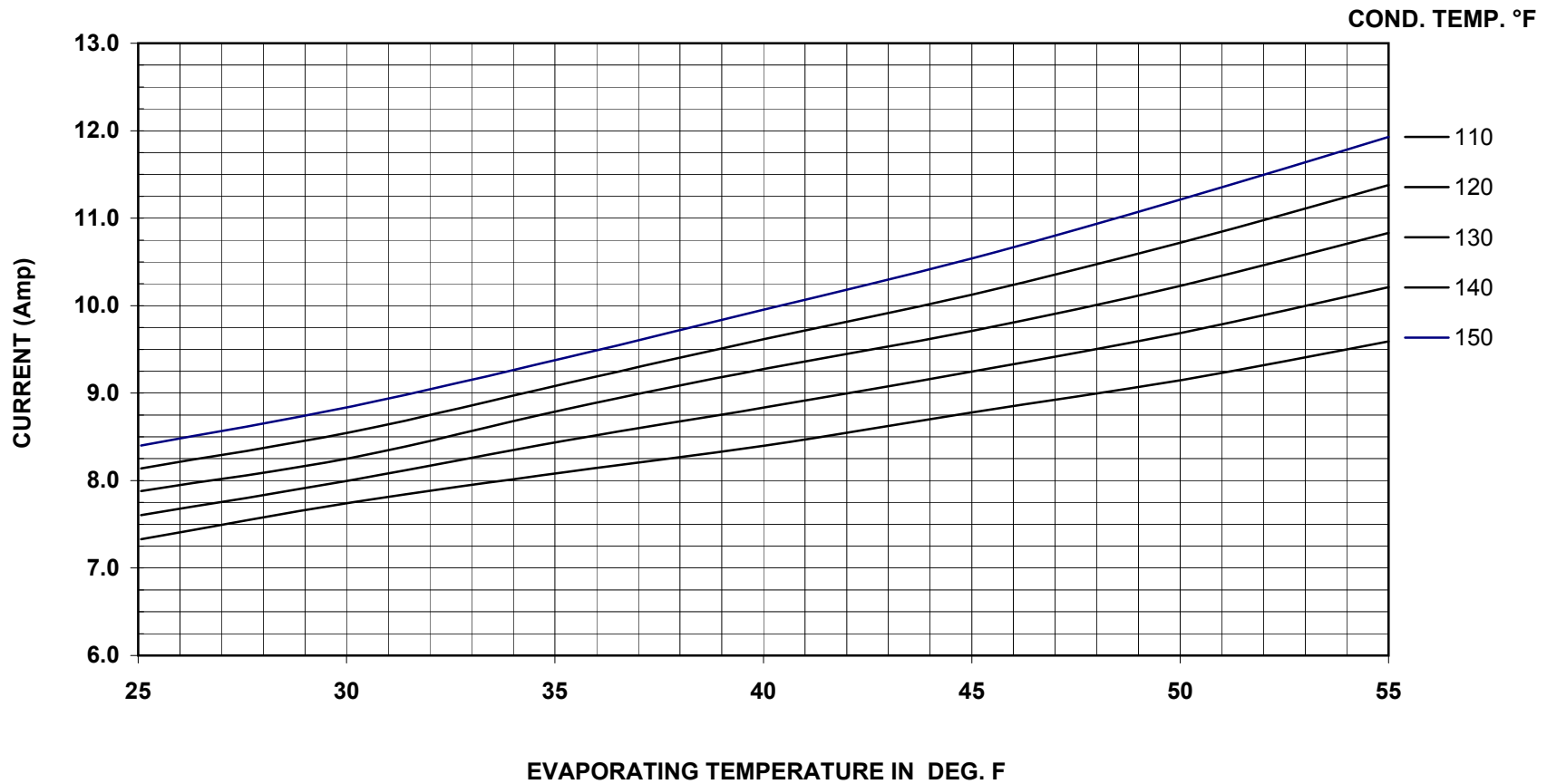
Application	: HBP	Refrigerent	: R-22	Voltage	: 208/230V
Frequency	: 60 Hz	Ambient Temp	: 95°F	Liquid Sub Cooled	: 115°F
Compr.Cooling	: 425 CFM	Return Gas Temp	: 95°F		





CURRENT CURVE FOR AWZ5520EXN COMPRESSOR

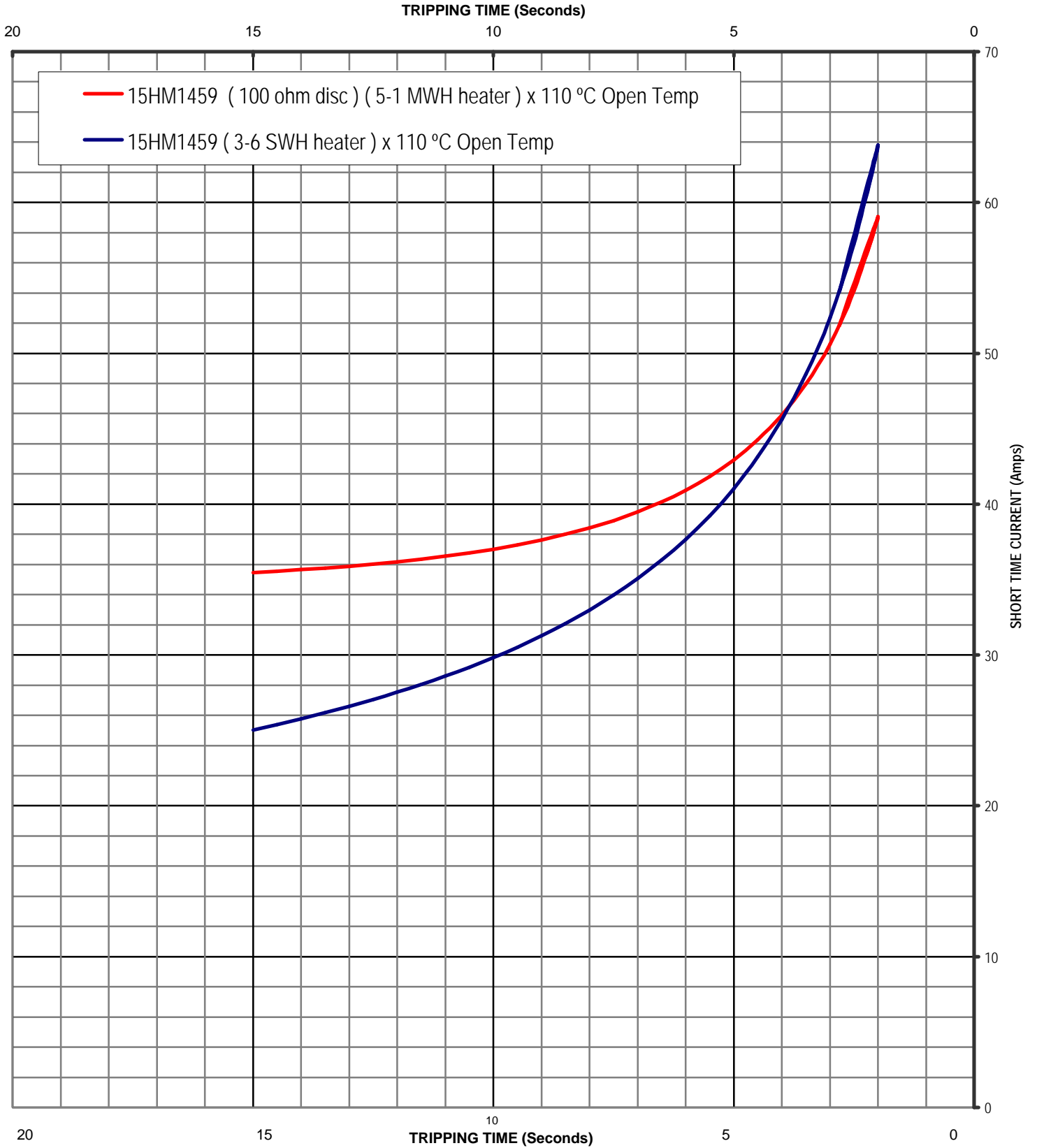
Application	: HBP	Refrigerent	: R-22	Voltage	: 208/230V
Frequency	: 60 Hz	Ambient Temp	: 95°F	Liquid Sub Cooled	: 115°F
Compr.Cooling	: 425 CFM	Return Gas Temp	: 95°F		



15HM MOTOR PROTECTOR

SHORT TIME CURVES

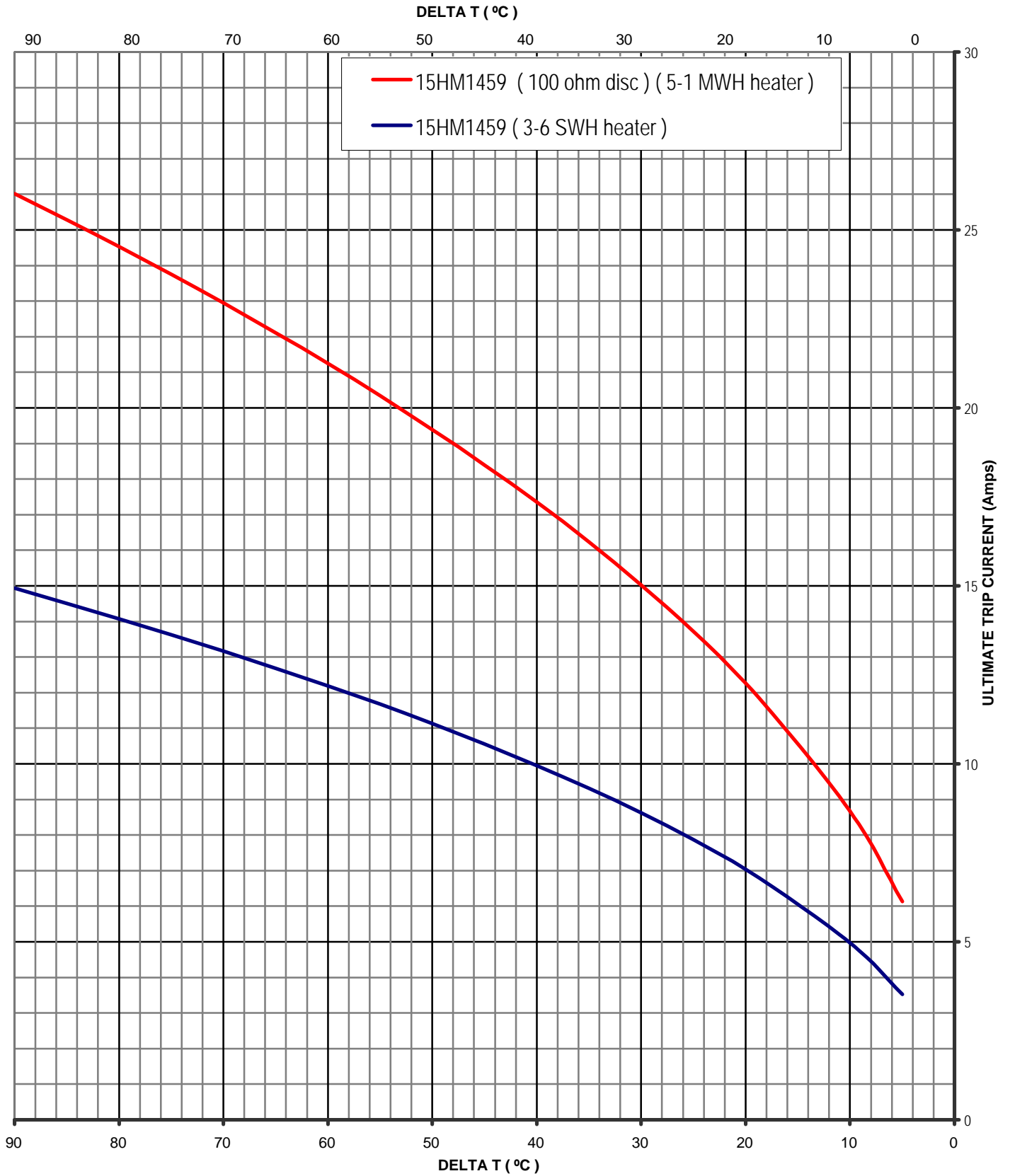
Average First Cycle Tripping Time VS. Current In 25 °C Ambient (Approximate).
 To Be Used Only For Selecting Samples For Motor Verification Test.

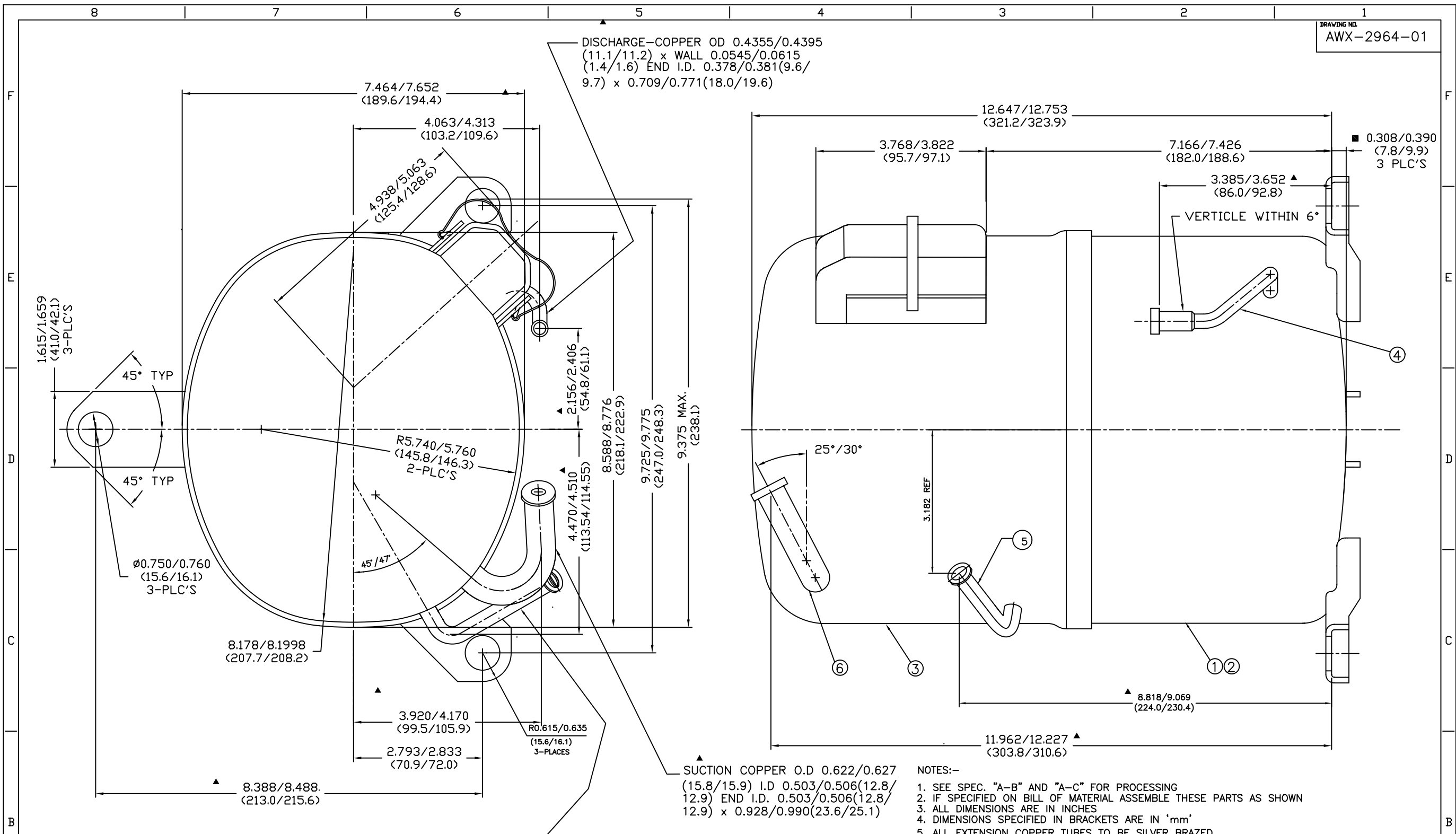


15HM MOTOR PROTECTOR

ULTIMATE TRIP CURVES

Ultimate Trip Current VS. Protector Ambient Temperature (Approximate).
To Be Used Only For Selecting Samples For Motor Verification Test.





- NOTES:-
1. SEE SPEC. "A-B" AND "A-C" FOR PROCESSING
 2. IF SPECIFIED ON BILL OF MATERIAL ASSEMBLE THESE PARTS AS SHOWN
 3. ALL DIMENSIONS ARE IN INCHES
 4. DIMENSIONS SPECIFIED IN BRACKETS ARE IN 'mm'
 5. ALL EXTENSION COPPER TUBES TO BE SILVER BRAZED
 6. ALL TUBE OPENINGS TO BE SEALED WITH SUITABLE RUBBER PLUGS AFTER NITROGEN CHARGING.

Q.A. SYMBOLS

- ★ = CATEGORY I
- ▲ = CATEGORY II
- = CATEGORY III
- = CATEGORY IV

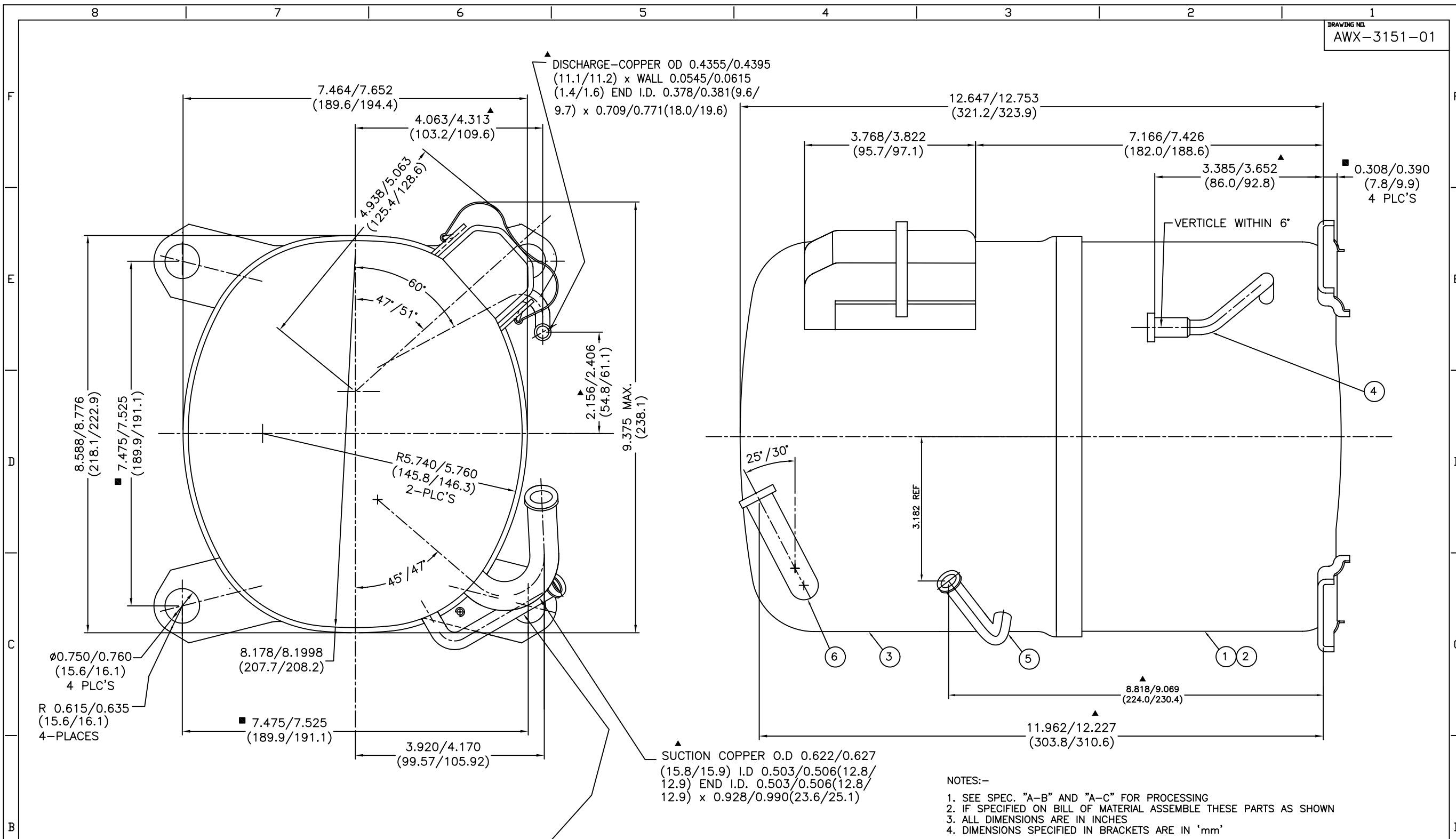
TOLERANCE	OPEN/2PL.DEC.	3 PL.DEC.	4 PL.DEC.
LINEAR			
ANGULAR			

S.NO.	DESCRIPTION	DRG.NO.	QTY
6	SUCTION TUBE	EX-34644	1
5	PROCESS TUBE	AWX-2436	1
4	DISCH. CONNETOR TUBE	34711	1
3	UPPER HOUSING ASSLY.	AWX-2615	1
2	LOWER HOUSING & TUBE ASSLY.	AWX-2924	1
1	LOWER HOUSING ASSLY (MTG.TYPE-3)	AWX-2963	1

AW-104/02-04	PROCESS TUBE THK WAS 0028P	RE-DRAWN	DATE
A B7	REL	LC	CHANGE

THIS DRAWING OR PRINT IS TO BE THE PROPERTY OF TECUMSEH PRODUCTS INDIA PVT.LTD. IT IS TO BE KEPT IN THE OFFICE AND NOT TO BE LOANED, REPRODUCED, COPIED, EITHER WHOLLY OR IN PART, OR TO BE USED FOR ANY OTHER PURPOSE WITHOUT THE WRITTEN CONSENT AND SIGNATURE OF THE TECHNICAL MANAGER. IT IS TO BE DESTROYED IMMEDIATELY AFTER THE PROJECT IS COMPLETED. THIS DRAWING IS TO BE KEPT IN THE OFFICE AND NOT TO BE LOANED, REPRODUCED, COPIED, EITHER WHOLLY OR IN PART, OR TO BE USED FOR ANY OTHER PURPOSE WITHOUT THE WRITTEN CONSENT AND SIGNATURE OF THE TECHNICAL MANAGER. IT IS TO BE DESTROYED IMMEDIATELY AFTER THE PROJECT IS COMPLETED.

DIS.CODE	NAME	SALES COMPRESSOR-3LEG (for Zamil)		
DWN.	CK.	APR.	SCALE	THIS PRINT SUPERSEDES ALL PRINTS PRIOR TO 05FEB04
RAVINDAR			1:1	
11SEP03				
TECUMSEH PRODUCTS INDIA PVT.LTD. HYDERABAD, INDIA				DRAWING NO.
MATERIAL				AWX-2964-01
NOTED				



- NOTES:-
1. SEE SPEC. "A-B" AND "A-C" FOR PROCESSING
 2. IF SPECIFIED ON BILL OF MATERIAL ASSEMBLE THESE PARTS AS SHOWN
 3. ALL DIMENSIONS ARE IN INCHES
 4. DIMENSIONS SPECIFIED IN BRACKETS ARE IN 'mm'
 5. ALL EXTENSION COPPER TUBES TO BE SILVER BRAZED
 6. ALL TUBE OPENINGS TO BE SEALED WITH SUITABLE RUBBER PLUGS AFTER NITROGEN CHARGING.

Q.A. SYMBOLS

- ★ = CATEGORY I
- ▲ = CATEGORY II
- = CATEGORY III
- = CATEGORY IV

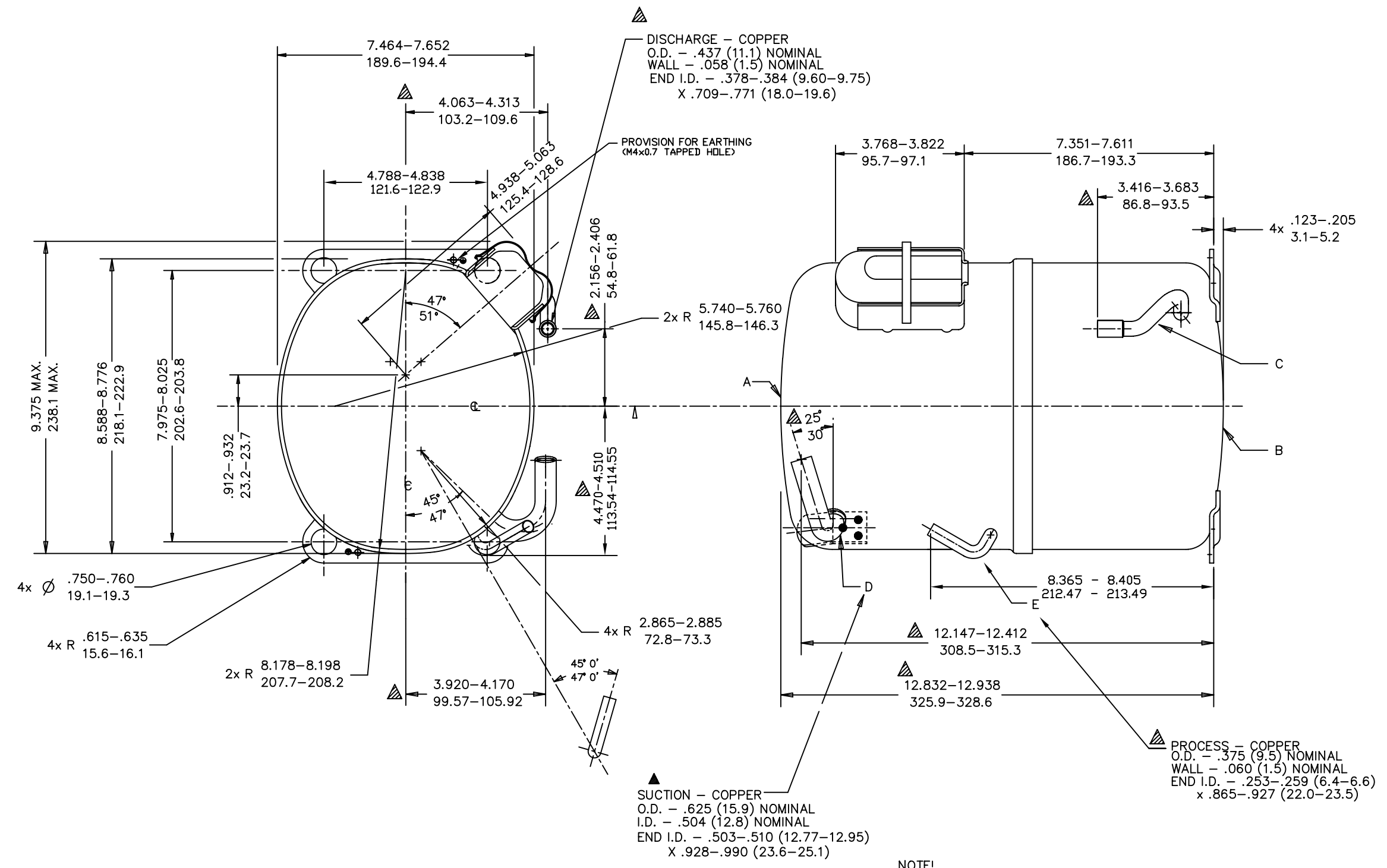
TOLERANCE	OPEN/2PL.DEC. 3 PL.DEC. 4 PL.DEC.
	LINEAR
ANGULAR	

S.NO.	DESCRIPTION	DRG.NO.	QTY
6	SUCTION TUBE	EX-34644	1
5	PROCESS TUBE	AWX-2436	1
4	DISCH. CONNETOR TUBE	34711	1
3	UPPER HOUSING ASSLY.	AWX-2615	1
2	LOWER HOUSING & TUBE ASSLY.	AWX-2924	1
1	LOWER HOUSING ASSLY (MTG.TYPE-1)	AWX-1678	1

REL	AM-024/02-04	PROCESS TUBE THK WAS 0.028"	05-02-04	DATE
REL	LT	LC	RETRAVN	CHANGE

THIS DRAWING OR PRINT IS THE PROPERTY OF TECUMSEH PRODUCTS INDIA PVT.LTD. AND IS NOT TO BE REPRODUCED OR TRANSMITTED IN ANY FORM OR BY ANY MEANS, ELECTRONIC OR MECHANICAL, INCLUDING PHOTOCOPYING, RECORDING, OR BY ANY INFORMATION STORAGE AND RETRIEVAL SYSTEM, WITHOUT THE WRITTEN CONSENT AND SIGNATURE OF THE TECHNICAL MANAGER. THIS DRAWING IS THE PROPERTY OF TECUMSEH PRODUCTS INDIA PVT.LTD. AND IS NOT TO BE REPRODUCED OR TRANSMITTED IN ANY FORM OR BY ANY MEANS, ELECTRONIC OR MECHANICAL, INCLUDING PHOTOCOPYING, RECORDING, OR BY ANY INFORMATION STORAGE AND RETRIEVAL SYSTEM, WITHOUT THE WRITTEN CONSENT AND SIGNATURE OF THE TECHNICAL MANAGER.

DIS.CODE	NAME SALES COMPRESSOR-4LEG (For Zamil)			
DWN.	RAVINDAR	CK.	APR.	SCALE 1:1
TECUMSEH PRODUCTS INDIA PVT.LTD. HYDERABAD, INDIA				THIS PRINT SUPERSEDES ALL PRINTS PRIOR TO 22SEP03
MATERIAL NOTED				DRAWING NO. AWX-3151-01



NOTE!
1. IF SPECIFIED ON BILL OF MATERIAL ASSEMBLE THESE PARTS AS SHOWN.
DIMENSIONING = $\frac{\text{INCHES}}{\text{MILLIMETERS}}$ OR INCHES (MILLIMETERS)

Q.A. SYMBOLS

- ★ = CATEGORY I
- ▲ = CATEGORY II
- = CATEGORY III
- = CATEGORY IV

MANUFACTURING NOTES

- SEE DWG. #AHT38 FOR ASSY. OF DISCHARGE CONNECTOR & LOWER SHOCK LOOP IN LOWER HOUSING.
- SEE SPEC. "A-B" & "A-C" FOR PROCESSING.

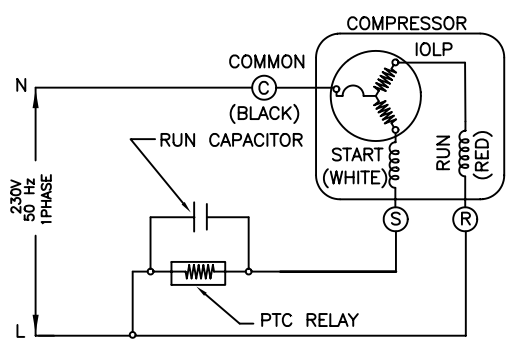
A	HA-642-4-1
B	AWX-3155
C	34711
D	EX-34644
E	EX-34467

REV	DATE	DESCRIPTION

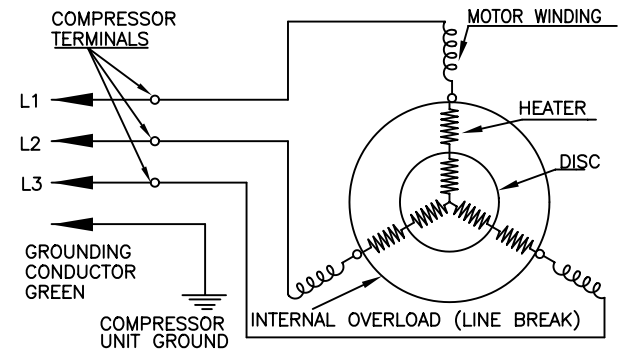
DIS.CODE	NAME SALES COMPRESSOR-4LEG (SHORT)			
DWN.	CK.	APR.	SCALE	THIS PRINT SUPERSEDES ALL PRINTS PRIOR TO 03JUL04
RAVINDAR	16JUN03		1"=2"	
TECUMSEH PRODUCTS INDIA LTD HYDERABAD, INDIA				PART NO.
MATERIAL NOTED				AWX-3325-00
INTERNAL USE ONLY				

DRAWING NO.
AWX-3383-00

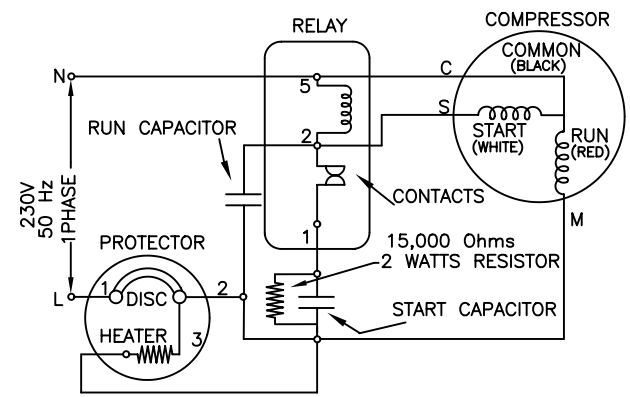
WIRING DIAGRAM - PTCS-CR CIRCUIT



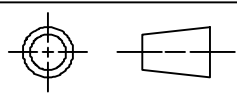
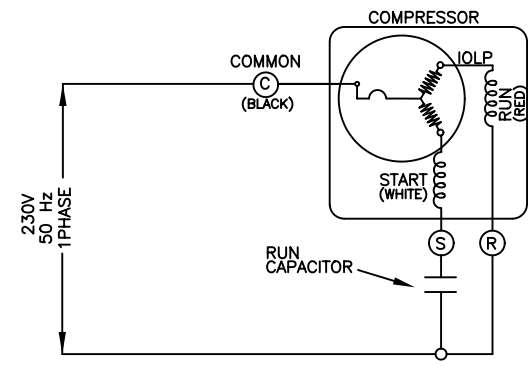
WIRING DIAGRAM - 3 PH



WIRING DIAGRAM - CSR CIRCUIT



WIRING DIAGRAM - PSC CIRCUIT



TOLERANCE	OPEN	3 PL. DEC	4 PL. DEC
LINEAR	---		
ANGULAR			

Q.A. SYMBOLS

- ★ = CATEGORY I
- ▲ = CATEGORY II
- = CATEGORY III
- = CATEGORY IV

LT	LC	CHANGE	DATE

THIS DRAWING OR PRINT IS THE PROPERTY OF TECUMSEH PRODUCTS INDIA LTD. (TECUMSEH) AND CONTAINS PROPRIETARY AND CONFIDENTIAL INFORMATION BELONGING TO TECUMSEH. IT IS MADE AVAILABLE TO THE RECIPIENT UNDER THE FOLLOWING SPECIFIC CONDITION: THAT NEITHER IT NOR THE INFORMATION CONTAINED THEREIN OR DISCLOSED THEREIN SHALL BE DISCLOSED OR MADE AVAILABLE TO ANY OTHER PERSON, FIRM, BUSINESS AND/OR ORGANIZATION WITHOUT THE WRITTEN CONSENT OF TECUMSEH. PRIOR EXPRESS AND SPECIFIC WRITTEN CONSENT AND (IV) THIS INFORMATION IS TO BE RETURNED TO TECUMSEH IMMEDIATELY UPON THE RECEIPT OF SUCH REQUEST IS MADE.

DIS.CODE	NAME				ELECTRICAL WIRING DIAGRAM	
DWN. SEKHAR 09SEP04	CK. G.N.R	APR.	SCALE NTS	THIS PRINT SUPERSEDES ALL PRINTS PRIOR TO		
MATERIAL	TECUMSEH PRODUCTS INDIA LTD. HYDERABAD, INDIA				DRAWING NO. AWX-3383-00	

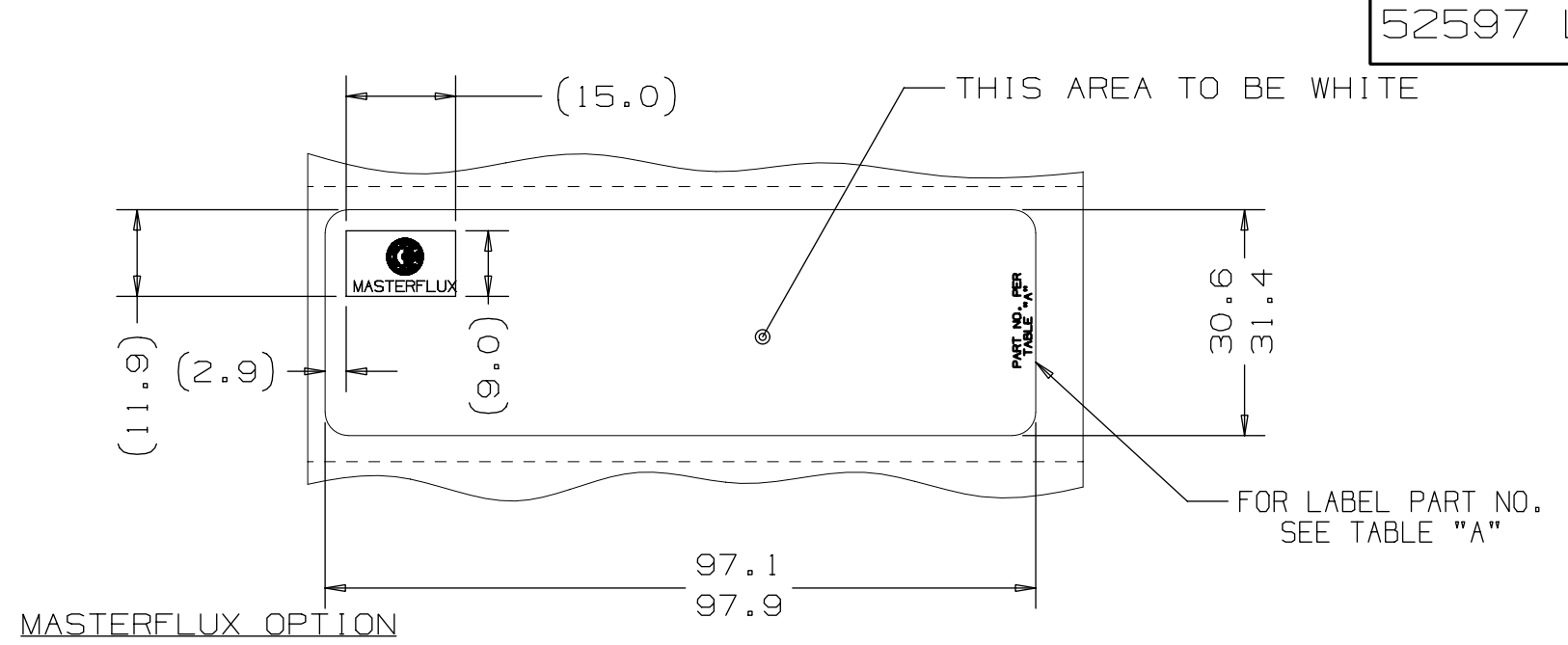
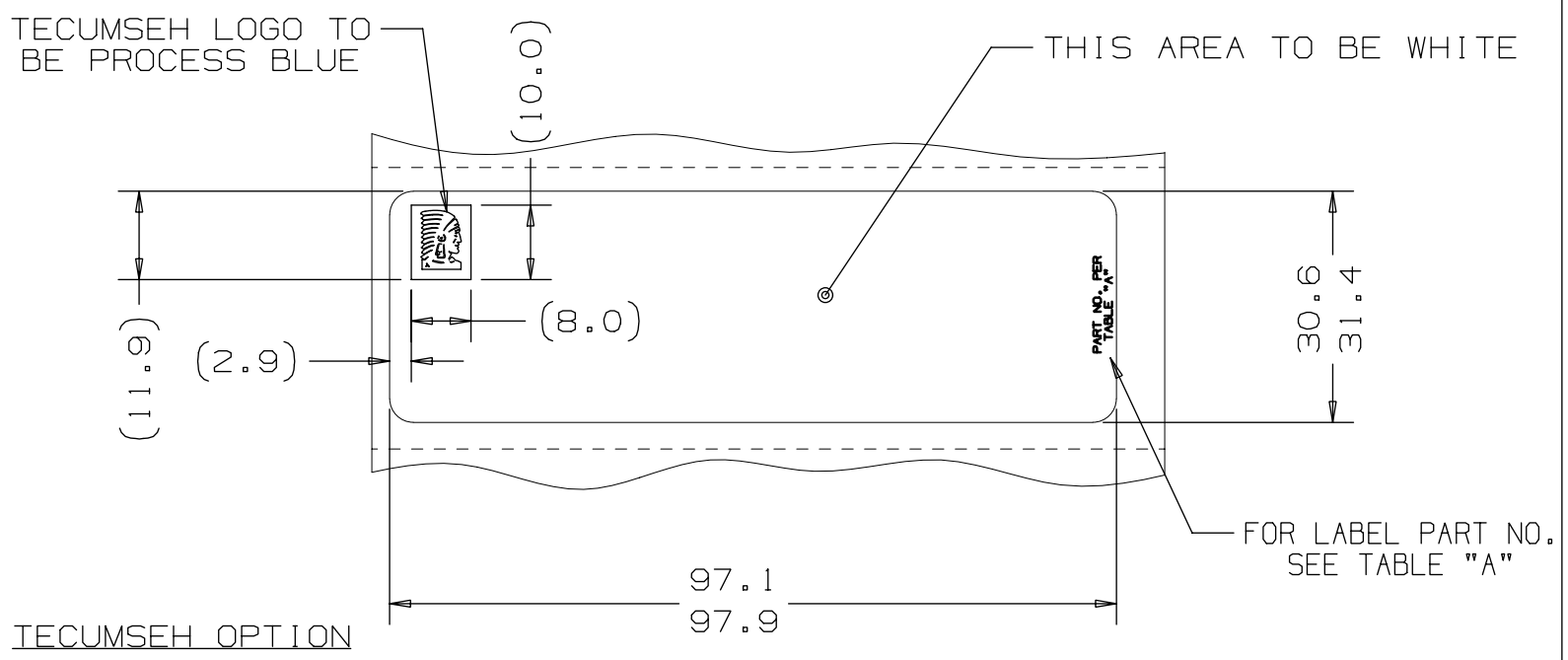
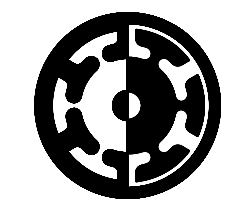


TABLE "A"

MFG LOCATION	PART NO.	LABEL MATERIAL	LOGO DWG. No.
USA/TdB	52597B	THERMLFILM PM200W - TC - 387 WITH L-23 ADHESIVE - 103mm WIDE - 40# SILICON.	MD893
TEC EUROPE	52597D	POLYESTER 7813 SILVER WITH 300 ADHESIVE MADE BY 3M AND THERMLFILM MM300 SATIN SILVER TC-712 WITH V-660 ADHESIVE MADE BY FLEXCON	MD893
TEC INDIA	52597E	3M 7385 TAMPER-INDICATING WITH #320 "HIGH TENACITY" ACRYLIC ADHESIVE - OR THERMLFILM PM200W - TC - 387 WITH L-23 ADHESIVE - 103mm WIDE - 40# SILICON.	MD893
MASTERFLUX	52547F	THERMLFILM PM200W - TC - 387 WITH L-23 ADHESIVE - 103mm WIDE - 40# SILICON.	MD892



TECUMSEH LOGO
SCALE 5:1
REF. DRAWING #MD893



MASTERFLUX

MASTERFLUX LOGO
SCALE 5:1
REF. DRAWING #MD892

- NOTES--
- PART MUST BE APPROVED PER T.P. Co. GLOBAL SPEC. #07.
 - FOR LABEL MATERIAL, PRINTER, PRINTER RIBBONS SEE TABLE "A"
 - PACKAGING TO BE MARKED WITH T.P.Co. PART NUMBER, 76.2mm I.D. x 82.6mm O.D.
 - DIECUT LABELS WOUND ON CORES OF 76.2mm I.D. x 82.6mm O.D.
 - FOR LOGO STYLE, FONT, AND COLORS SEE TABLE "A".

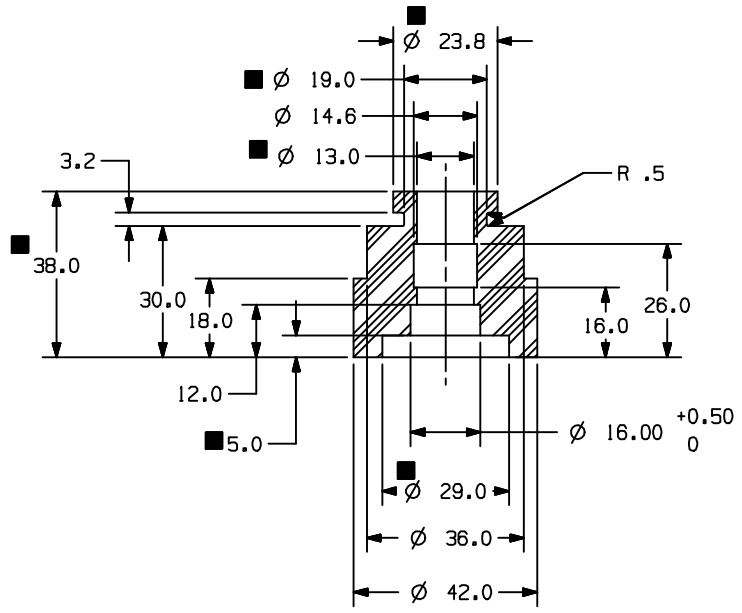
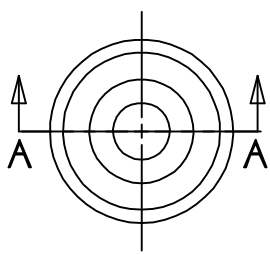
METRIC	
Q.A. SYMBOLS	
☆	= CATEGORY I
△	= CATEGORY II
□	= CATEGORY III
○	= CATEGORY IV

ALL

		REEVES 20AUG03			DATE			DIS.CODE	NAME		COMPRESSOR SERIAL LABEL	
		#241521-030 DWG.# MD893 WAS MC893	ADDED REFERENCE NOTE TO LOGOS	REEVES 20AUG03	DTD 21JUL03			DWN. 12JUN03	CK. ON FILE	APR. ON FILE	SCALE 1=1	THIS PRINT SUPERSEDES ALL PRINTS PRIOR TO
		3B	2C	D 3B	C 6A	B 5B	A --	TECUMSEH PRODUCTS CO. TECUMSEH, MICHIGAN		DRAWING NO. 52597 LTR		
		E						MATERIAL NOTED				
								DRAWING No. MD888-07		REVISION LEVEL: REL		

THIS DRAWING OR PRINT (1) IS THE PROPERTY OF TECUMSEH PRODUCTS COMPANY (TECUMSEH) AND CONTAINS PROPRIETARY AND CONFIDENTIAL INFORMATION BELONGING TO TECUMSEH. IT IS TO BE KEPT IN STRICT CONFIDENCE AND NOT TO BE LOANED, REPRODUCED, COPIED, OR DISCLOSED TO ANY OTHER PERSON OR ENTITY WITHOUT THE WRITTEN CONSENT OF TECUMSEH. ANY INFORMATION OBTAINED HEREIN IS TO BE USED ONLY FOR THE PURPOSES SPECIFICALLY STATED IN THIS DRAWING AND IS NOT TO BE USED FOR ANY OTHER PURPOSE. ANY UNAUTHORIZED USE OR DISCLOSURE OF THIS INFORMATION SHALL BE CAUSE FOR IMMEDIATE ACTION TO PROTECT THE RIGHTS OF TECUMSEH. THIS DRAWING IS THE PROPERTY OF TECUMSEH AND IS TO BE KEPT IN STRICT CONFIDENCE AND NOT TO BE LOANED, REPRODUCED, COPIED, OR DISCLOSED TO ANY OTHER PERSON OR ENTITY WITHOUT THE WRITTEN CONSENT OF TECUMSEH. ANY INFORMATION OBTAINED HEREIN IS TO BE USED ONLY FOR THE PURPOSES SPECIFICALLY STATED IN THIS DRAWING AND IS NOT TO BE USED FOR ANY OTHER PURPOSE. ANY UNAUTHORIZED USE OR DISCLOSURE OF THIS INFORMATION SHALL BE CAUSE FOR IMMEDIATE ACTION TO PROTECT THE RIGHTS OF TECUMSEH.

DRAWING NO.
AWX-2025-03



MATERIAL : 50% SBR + 50% NATURAL RUBBER
CLASS & TYPE AA AS PER H-110

- PROPERTIES:
- HARDNESS : 37 DHN ± 3
 - TENSILE STRENGTH : 1015 PSI MIN.
 - ELONGATION : 400% MIN.
 - AFTER AGING AT 70° C FOR 70 HRS
 - HARDNESS: ± 15
 - TENSILE STRENGTH: ± 30%
 - ELONGATION: - 50% MAX
 - COMPRESSION TEST: 50% MAX. 22HRS AT 70° C
 - COLOUR : BLACK
 - SPECIFIC GRAVITY 1.2±0.1

- NOTES:
- TO BE FREE FROM FLASH
 - ALL DIMENSIONS ARE IN MM

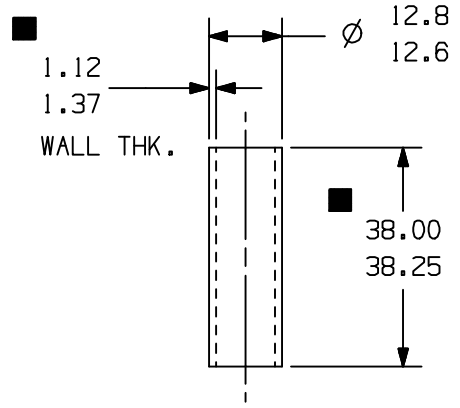
SECTION A - A

Q.A. SYMBOLS	
★	= CATEGORY I
▲	= CATEGORY II
■	= CATEGORY III
□	= CATEGORY IV

TOLERANCE	AW		
	OPEN/2PL.DEC.	3 PL.DEC.	4 PL.DEC.
LINEAR	±0.010	-	-
ANGULAR	±1°	-	-

THIS DRAWING OR PRINT (1) IS THE PROPERTY OF TECUMSEH PRODUCTS INDIA LTD. AND CONTAINS INFORMATION RELATING TO TRADE SECRETS, PATENTS AND PROPRIETARY RIGHTS. IT IS TO BE KEPT IN STRICTLY CONFIDENTIAL AND NOT TO BE REPRODUCED OR COPIED IN ANY MANNER WITHOUT THE WRITTEN PERMISSION OF TECUMSEH PRODUCTS INDIA LTD. ANY INFORMATION DISCLOSED HEREIN SHALL BE THE PROPERTY OF TECUMSEH PRODUCTS INDIA LTD. AND SHALL BE KEPT IN STRICTLY CONFIDENTIAL AND NOT TO BE REPRODUCED OR COPIED IN ANY MANNER WITHOUT THE WRITTEN PERMISSION OF TECUMSEH PRODUCTS INDIA LTD. ANY INFORMATION DISCLOSED HEREIN SHALL BE THE PROPERTY OF TECUMSEH PRODUCTS INDIA LTD. AND SHALL BE KEPT IN STRICTLY CONFIDENTIAL AND NOT TO BE REPRODUCED OR COPIED IN ANY MANNER WITHOUT THE WRITTEN PERMISSION OF TECUMSEH PRODUCTS INDIA LTD.	REVISION IN UNIGRAPHICS	DATE	DIS. CODE				NAME				THIS PRINT SUPERSEDES ALL PRINTS PRIOR TO
	LT	LC	DWN. VENU 12APR02				GROMMET				
				CK.	APR.	SCALE	TECUMSEH PRODUCTS INDIA LTD. HYDERABAD, INDIA				
				MATERIAL REF. ABOVE				DRAWING NO. AWX-2025-03			

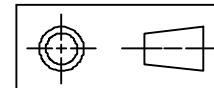
DRAWING NO.
AWX-2026-04



NOTES:

1. TO BE FREE FROM RUST & BURRS.
2. TREATMENT: ZINC PASSIVATED 0.005 MM MIN.
3. I.D. MUST ACCEPT A \varnothing 9.68 GAUGE PIN.
4. ALL DIMENSIONS ARE IN MM.

Q.A. SYMBOLS	
★	= CATEGORY I
▲	= CATEGORY II
■	= CATEGORY III
□	= CATEGORY IV

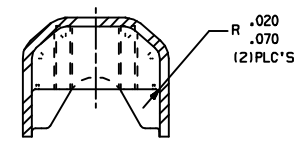
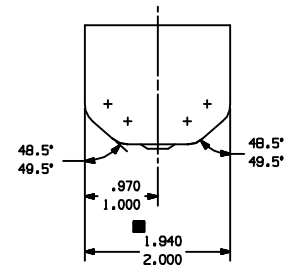


TOLERANCE	OPEN/2PL.DEC.	3 PL.DEC.	4 PL.DEC.
LINEAR	-	-	-
ANGULAR	± 1°		

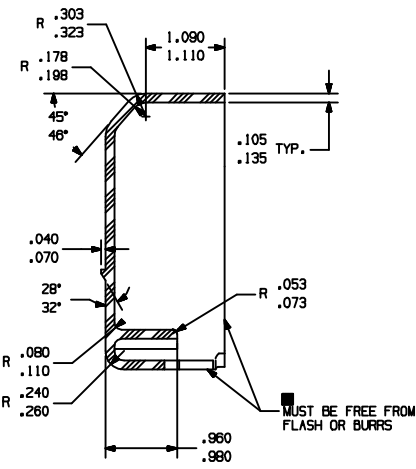
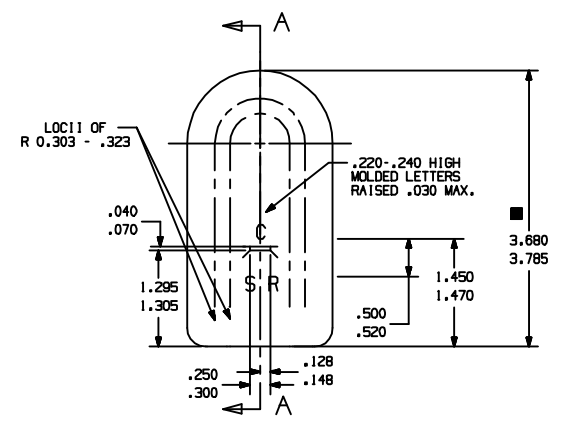
LT	LC	CHANGE	DATE	DIS.CODE	NAME	DWN.	CK.	APR.	SCALE	THIS PRINT SUPERSEDES ALL PRINTS PRIOR TO
		REDRAWN IN MURALI UNIGRAPHICS 05MAR04		--	GROMMET SLEEVE	VENU 10APRO2	ONFILE	--	1:1	
<p>THIS DRAWING OR PRINT (I) IS THE PROPERTY OF TECUMSEH PRODUCTS COMPANY AND CONTAINS INFORMATION BELONGING TO TECUMSEH. (I) IS MADE AVAILABLE TO THE SPECIFIC CONDITION THAT NEITHER IT NOR THE INFORMATION CONTAINED THEREIN IS TO BE REPRODUCED OR USED IN ANY MANNER WITHOUT THE EXPRESS AND WRITTEN CONSENT OF TECUMSEH. ONLY AS EXPRESSLY AND SPECIFICALLY APPROVED IN WRITING BY TECUMSEH AND NOT IN ANY OTHER MANNER OR TO ANY EXTENT WITHOUT TECUMSEH'S PRIOR EXPRESS AND WRITTEN CONSENT. THE RECIPIENT SHALL BE RETURNED BY THE RECIPIENT THEREOF TO TECUMSEH AT THE ADDRESS MENTIONED PROMPTLY AFTER SUCH AS REQUEST IS MADE.</p> <p>DO NOT SCALE THIS DRAWING. MATERIALS MUST NOT BE MAGNETIZED AS RECEIVED OR AT COMPRESSOR ASSEMBLY.</p>										
<p>TECUMSEH PRODUCTS INDIA PVT.LTD. HYDERABAD, INDIA</p>										DRAWING NO.
<p>MATERIAL WELDED STEEL TUBE CEW AS PER IS: 3074</p>										AWX-2026-04

NOTES:

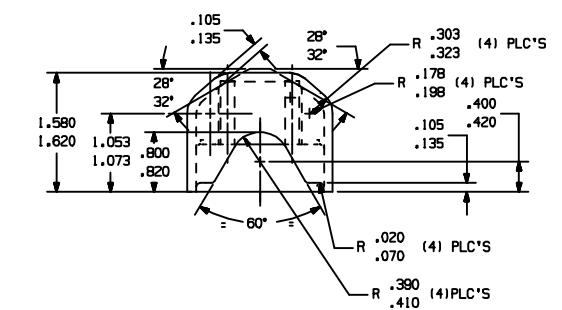
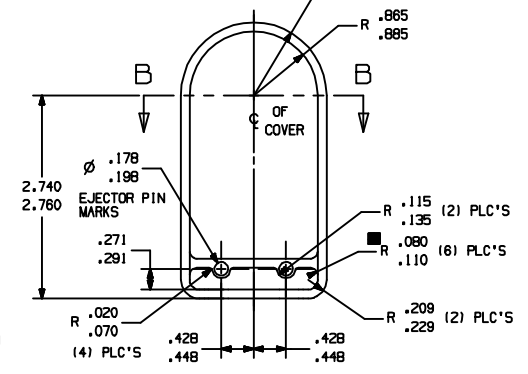
1. SEE T.P.CO. SPEC. #H-101.
2. COLOR - BLACK.
3. MATERIAL - PLASTIGAGE CORP. FIBER GLASS REINFORCED POLYESTER (BLACK COMPOUND) U.L. RECOGNIZED HETHER LITE 802-5574.
4. ALT. MATL. - AMERICAN CYANAMID CO. GLASS REINFORCED ALKYD MOLDING (BLACK) COMPOUND U.L. RECOGNIZED COMPOUND "GLASKYD", 3001G OR INDUSTRIAL DIELECTRICS MAT'L. DESIGNATION P. 5003 FR (MOLDER GREAT LAKES PLASTICS INC.)
5. ALT. MATERIAL : DEV1 POLYMERS DOUGH MOLDING COMPOUND U.L. RECOGNIZED "FLDODMAT" #5585/30
6. ALT. MATERIALS : NORYL PX8406N (GE) -UL APPROVED
7. VENDOR MUST SHOW MATL. DESIGNATION ON OUTSIDE OF SHIPPING CONTAINER.
8. VENDOR SHOULD UNDERGO UL'S MOLDER PROGRAM FOR PLASTICS



SECTION B - B



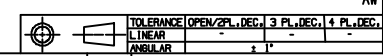
SECTION A - A



3D, UG-NX

Q.A. SYMBOLS

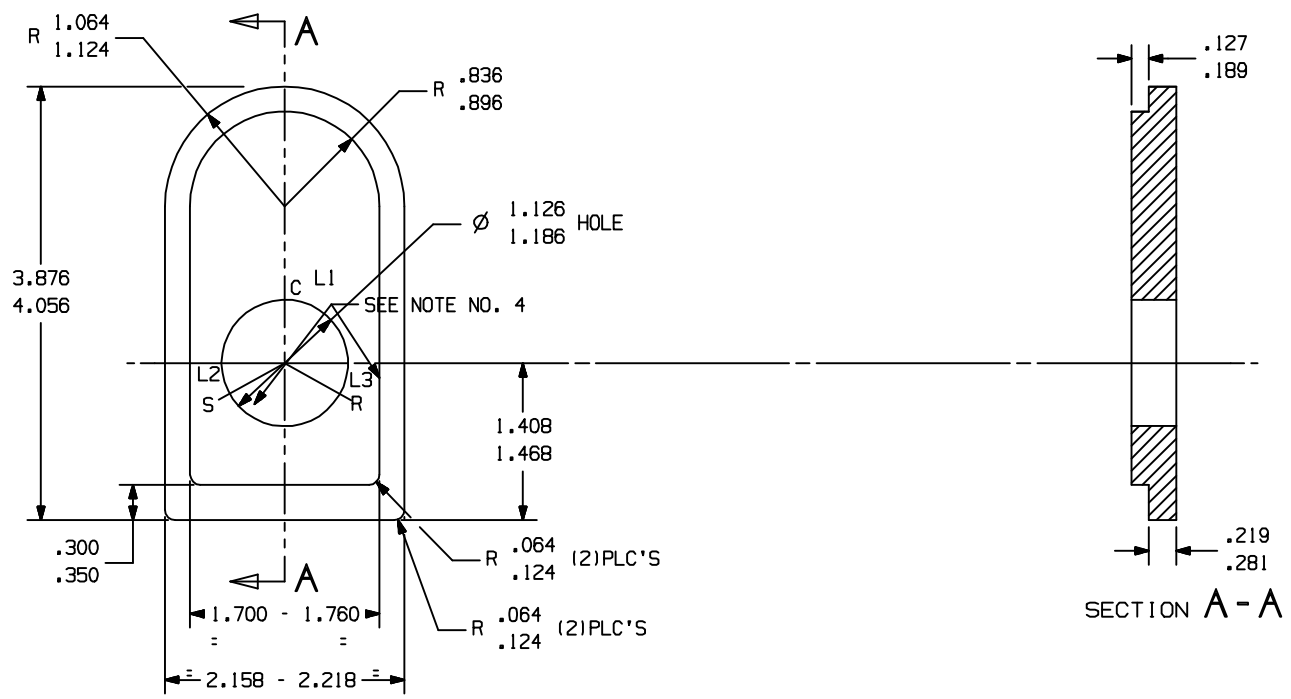
- ★ = CATEGORY I
- ▲ = CATEGORY II
- = CATEGORY III
- = CATEGORY IV



REV	DATE	BY	CHKD	DESCRIPTION
B				ALL DIMENSIONS UNLESS OTHERWISE SPECIFIED
A				MODIFIED
REL				REVISIONS

DIS. CODE	NAME	PROTECTIVE COVER		
DWL	SPMANI	OK.	APPL.	SCALE
02AUG03	ON FILE	ON FILE	1:1	ALL PRINTS SUPERSEDED BY THIS PRINT
TECUMSEH PRODUCTS INDIA PVT.LTD.		DRAWING NO.		
HYDERABAD, INDIA		AWX-2079-02		
MATERIAL				
SEE NOTES				

DRAWING NO.
AWX-2078-00



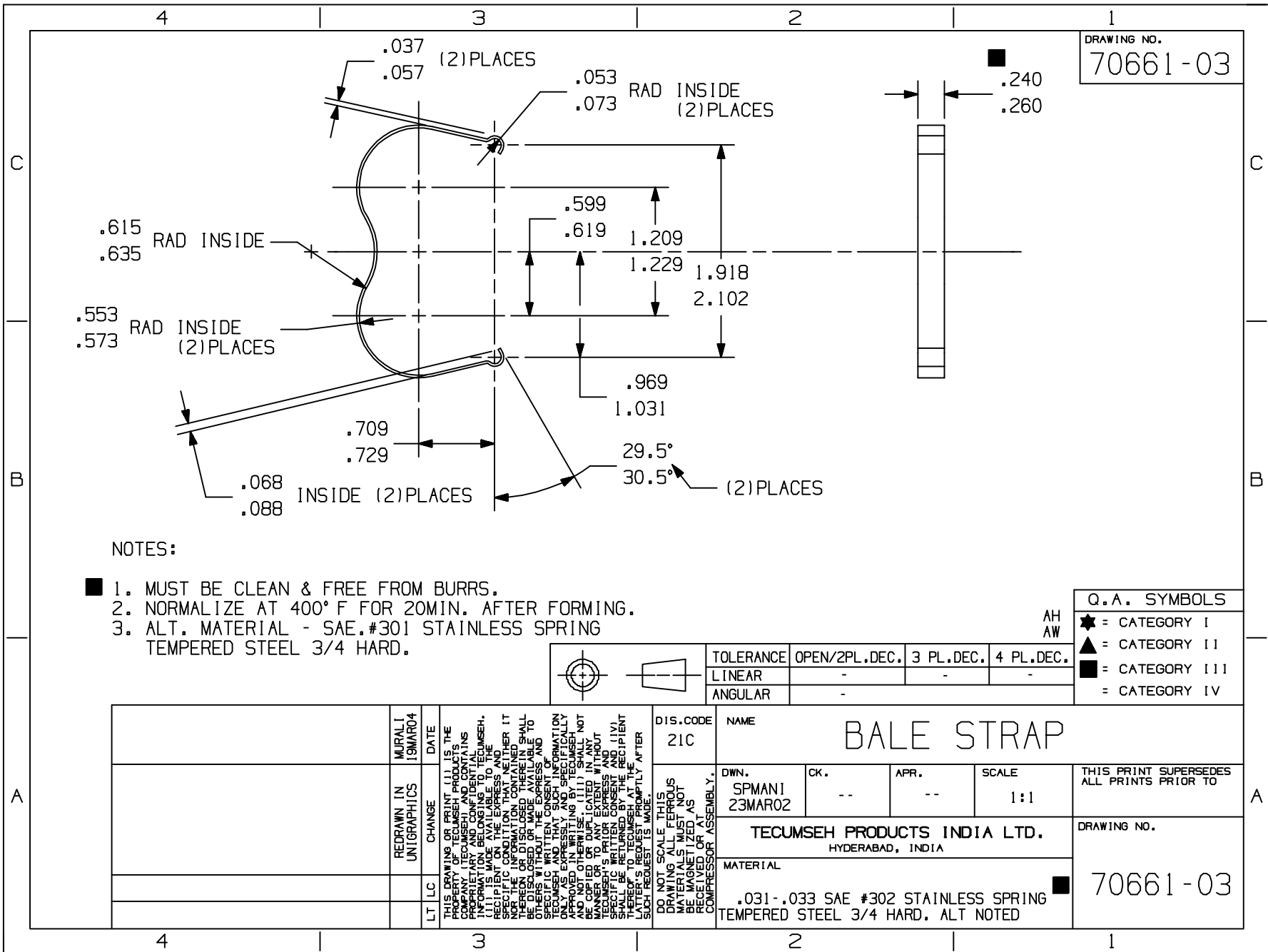
NOTES:

1. SEE T.P.Co. SPEC. NO. E-75 FOR STORAGE
2. VENDOR MUST SHOW MATERIAL DESIGNATION ON, OUTSIDE OF SHIPPING CONTAINER
3. MATERIAL- RUBATEX R425 N (OR) NEOPRENE
 ALT. MATERIAL : AMERICAN NATIONAL RUBBER CO. -4219 N
 ALT. MATERIAL -UNIROYAL INSOLITE TYPE IV2
4. 3/16 HIGH LETTER AS SHOWN 3-PLACES USING DERUSTO MAINUTE
 FINISH HIGLOSS SPEED FINISH D-25 ALUMINUM
5. MATERIAL DENSITY = 30 TO 40 PCF

Q.A. SYMBOLS			
★	=	CATEGORY I	
▲	=	CATEGORY II	
■	=	CATEGORY III	
□	=	CATEGORY IV	

TOLERANCE	OPEN/2PL.DEC.	3 PL.DEC.	4 PL.DEC.
LINEAR	-	-	-
ANGULAR	± 1°		

REVISION IN UNIGRAPHICS	MATERIAL	DATE	NAME				DRAWING NO.	
LT/LC	CHANGE		GASKET FOR PROTECTIVE COVER				AWX-2078-00	
<small>THIS DRAWING OR PRINT SHALL BE THE PROPERTY OF T.E.CUMSEH. IT CONTAINS INFORMATION BELONGING TO T.E.CUMSEH. NO PART OF THIS INFORMATION CONTAINED HEREIN IS TO BE DISCLOSED OR MADE AVAILABLE TO ANY OTHER PERSON OR ORGANIZATION WITHOUT THE WRITTEN CONSENT OF T.E.CUMSEH. APPROVED IN WRITING BY T.E.CUMSEH. NO COPY FOR DATE LATER THAN THE DATE OF THIS DRAWING AND T.E.CUMSEH'S PRIOR APPROVAL SHALL BE OBTAINED BY THE RECIPIENT. THIS DRAWING IS TO BE RETURNED TO T.E.CUMSEH IMMEDIATELY AFTER SUCH REQUEST IS MADE.</small>			DWG. NO.	CK.	APR.	SCALE	THIS PRINT SUPERSEDES ALL PRINTS PRIOR TO	
			SPMAN1 11JUN03	ON FILE	ON FILE	1:1		
T.E.CUMSEH PRODUCTS INDIA PVT.LTD. HYDERABAD, INDIA							DRAWING NO.	
MATERIAL							AWX-2078-00	
REFER NOTES								



NOTES:

- 1. MUST BE CLEAN & FREE FROM BURRS.
- 2. NORMALIZE AT 400° F FOR 20MIN. AFTER FORMING.
- 3. ALT. MATERIAL - SAE.#301 STAINLESS SPRING TEMPERED STEEL 3/4 HARD.

Q.A. SYMBOLS	
★	= CATEGORY I
▲	= CATEGORY II
■	= CATEGORY III
□	= CATEGORY IV

TOLERANCE	OPEN/2PL.DEC.	3 PL.DEC.	4 PL.DEC.
	LINEAR	-	-
ANGULAR	-	-	-

THIS DRAWING OR PRINT (I) IS THE PROPERTY OF TECUMSEH PRODUCTS. IT IS NOT TO BE REPRODUCED, COPIED, OR TRANSMITTED IN ANY MANNER WITHOUT THE WRITTEN CONSENT OF TECUMSEH PRODUCTS. ALL INFORMATION CONTAINED HEREIN IS UNCLASSIFIED AND CONFIDENTIAL INFORMATION BELONGING TO TECUMSEH. THE INFORMATION IS TO BE KEPT SECRET AND NOT TO BE DISCLOSED OR MADE AVAILABLE TO OTHERS WITHOUT THE EXPRESS AND WRITTEN CONSENT OF TECUMSEH PRODUCTS. ANY INFORMATION SPECIFICALLY WRITTEN OR OTHERWISE IDENTIFIED AS CONFIDENTIAL OR PROPRIETARY INFORMATION SHALL BE RETURNED TO TECUMSEH PRODUCTS AT THE REQUEST OF THE COMPANY. THIS DRAWING IS THE PROPERTY OF TECUMSEH PRODUCTS. IT IS NOT TO BE REPRODUCED, COPIED, OR TRANSMITTED IN ANY MANNER WITHOUT THE WRITTEN CONSENT OF TECUMSEH PRODUCTS. ALL INFORMATION CONTAINED HEREIN IS UNCLASSIFIED AND CONFIDENTIAL INFORMATION BELONGING TO TECUMSEH. THE INFORMATION IS TO BE KEPT SECRET AND NOT TO BE DISCLOSED OR MADE AVAILABLE TO OTHERS WITHOUT THE EXPRESS AND WRITTEN CONSENT OF TECUMSEH PRODUCTS. ANY INFORMATION SPECIFICALLY WRITTEN OR OTHERWISE IDENTIFIED AS CONFIDENTIAL OR PROPRIETARY INFORMATION SHALL BE RETURNED TO TECUMSEH PRODUCTS AT THE REQUEST OF THE COMPANY.	DIS.CODE 21C	NAME BALE STRAP			THIS PRINT SUPERSEDES ALL PRINTS PRIOR TO		
	REDRAWN IN UNIGRAPHICS	MURALI 19MAR04	DATE	DWN. SPMAN1 23MAR02		CK. --	APR. --
	LT	LC	CHANGE	TECUMSEH PRODUCTS INDIA LTD. HYDERABAD, INDIA			DRAWING NO.
	MATERIAL .031-.033 SAE #302 STAINLESS SPRING TEMPERED STEEL 3/4 HARD. ALT NOTED						70661-03