



TECUMSEH PRODUCTS INDIA PVT. LTD.

TECHNICAL SPECIFICATIONS

AWZ5516EXN
(208/230V - 1Ph - 60Hz)



AWZ5516EXN

208/230V-60Hz-1Ph

PERFORMANCE SPECIFICATION:

Model	AWZ5516EXN	
Bill of Material	4 LEG -STANDARD	AWZ5516EXN0001
	3 LEG - STANDARD	AWZ5516EXN0003
	4 LEG -SHORT	AWZ5516EXN0002
	3 LEG - SHORT	-
Application	Room Air conditioning	
Refrigerant	R – 22	
Electrical Rating	230/208 VOLTS, 60 Hz, Single Phase	
Capacity – (Btu / Hr)	16000	
(Kcal / Hr)	4030	
(Watts)	4689	
Input Power (Watts)	1580	
Input Current (Amps)	7.0	
Efficiency (Btu / W-Hr)	10.13	
(Kcal / W-Hr)	2.55	
(Watts / Watts)	2.97	

Note: Performance Tolerance - $\pm 5\%$

RATING CONDITIONS (ASHRAE-T)

Evaporator Temperature	45 °F	7.2 °C
Condensing Temperature	130 °F	54.4 °C
Return Gas Temperature	95 °F	35 °C
Liquid temperature	115 °F	46 °C
Ambient temperature	95 °F	35 °C



AWZ5516EXN

208/230V-60Hz-1Ph

COMPRESSOR SPECIFICATION

Compressor Type	Hermetic Reciprocating
Suction Scheme	Low side dome
Number of Cylinders	Two
Displacement (in ³ / Rev)	1.995
(cc / Rev)	32.7
(CFH)	201.02
(CMH)	5.69
Oil Charge (Initial FL. OZ)	38 (Cold)
(Refill FL. OZ)	34 (Cold), 36 (Hot)
(Initial CC)	1,130 (Cold)
(Refill CC)	1,006 (Cold), 1,066 (Hot)
Oil Specification	SUNISO 3GS
Oil circulation rate (lb / hour)	1.56
(Grams / hour)	707
Refrigerant charge (lbs)	4.23
(KG)	1.92
Internal Pressure Relief Valve Operating Differential (PSI)	525 ± 25
(KG / CM ²)	36.75 ± 1.758
Compressor Weight (lbs with oil)	59.4
(kgs with oil)	27.0
Sound Power Level on kit (dBA)	68 ± 3
Discharge Pressure Pulse (PSI)	0.9 Nominal
Inclination	<= 5°
Compressor Finish	Backed Enamel (Black)



AWZ5516EXN

208/230V-60Hz-1Ph

MOTOR SPECIFICATION:

Motor Type	Permanent Split Capacitor
Nominal output (HP)	2.0
Nominal Voltage (Volts)	208 / 230
Voltage Range (Volts)	197-253
Frequency / Phase (Hz / \emptyset)	60 / 1
Number of poles	Two (2)
Nominal speed	3500
Locked rotor current (Amps)	43
Rated Load current (Amps)	7.0
Maximum Continuous current (Amps)	12.2
Motor Cooling	Suction Gas
Maximum winding Temperature °F/°C	265/130
Insulation Class (°C)	Class B (130°C)
Motor cu wire enameled class	POLYSTER IMIDE as Base Coat 180°C POLYAMIDE IMIDE as Top Coat 220°C
Winding Resistance	At 77 °F (25 °C)
Main Winding (Ohm)	1.54
Start Winding (Ohm)	4.80
Motor Protector Part Number	15HM 1707-43
Motor Protector Type	Internal
Opening Temperature (°C)	110
Closing Temperature (°C)	69
Ultimate Trip Current at 86 °C Min (EPA)	
Main (A)	10.0
Aux (A)	1.5
First Cycle Trip Current (EPA 25°C)	
3-9 Seconds Main (A)	37
Aux (A)	23



AWZ5516EXN

208/230V-60Hz-1Ph

APPLICATION SPECIFICATION

Discharge Pressure Range (PSI) (KG/CM ²)	143.6 – 464.0 10.1 - 32.63
Suction Pressure Range (PSI) (KG/CM ²)	13.2 – 92.6 0.9 - 6.5
Discharge Pressure Range (PSI) Block Fan Test (KG/CM ²)	580 at 230 Volts 40.78
Compression Ratio (Max)	7.3
Discharge Temperature (°F) (°C)	290 143
Bottom Shell Temperature (°F) (°C)	$\geq E_T + 35$ $\geq E_T + 19.4$
Outdoor / Indoor Conditions (°F) (°C)	67.0 DBT / 57.0 WBT 19.4 DBT / 13.9 WBT
Superheat (°F) (°C)	19.4 10.8
Inclination	$\leq 5^\circ$
Maximum Ambient (°C) At Start Voltage of 198 V	54

PROCESS SPECIFICATION

Moisture Limit (mg)	75 (After Dehydration)
Residue Limit (mg)	Not available for finished compressor
Leak Test Pressure (PSI) (KG/CM ²)	150 10.6
Shell Integrity Test (PSI) (KG/CM ²)	200 14.1
UL Shell Integrity (PSI) (KG/CM ²)	1000 70.4
High Potential Test (Volts) Current Leakage limit (mA)	1500 for One (1) Second 1.3



AWZ5516EXN

208/230V-60Hz-1Ph

APPLICABLE SAFETY STANDARDS

UL File Number	-
UL Class Number	-
VDE File Number	-
VDE License Number	-

COMPRESSOR ACCESSORIES

Parts Name	Drawing No.	Qty.
Mounting Grommet	AWX – 2025 – 03	1 / Leg
Mounting Sleeve	AWX – 2026 – 04	1 / Leg
Terminal Cover	AWX-2079-02	1
Terminal Cover Gasket	AWX-2078-00	1
Spring Clip (Bale Strap)	70661 – 03	1

COMPRESSOR ACCESSORIES (OPTIONAL)

Parts Name	Part Code / Specifications	Qty.
Run Capacitor (MFD, Volts)	20 MFD, 370 VAC	1
PTC Starting Device (Ohms)	NA	1
Start Capacitor (MFD, Volts)(Optional)	NA	1
Potential Relay (Optional) Pick up Volts (Hot) Drop-Out Volts (Cold)	NA	1
Crank case Heater (TPC / TI) Voltage Limit (Volts) Power Output (Watts)	NA	1



AWZ5516EXN

208/230V-60Hz-1Ph

APPLICABLE DRAWINGS

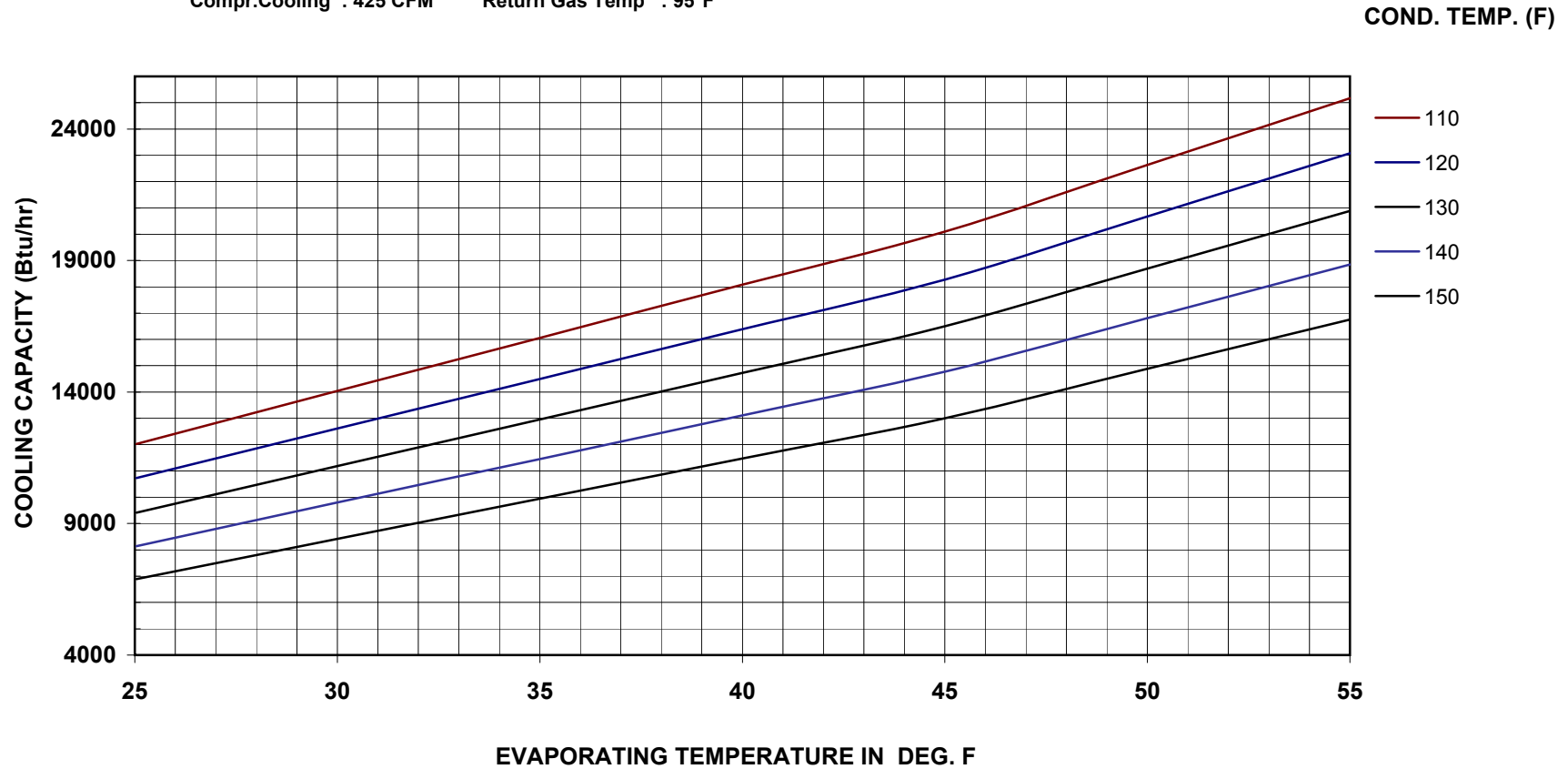
Performance Curves	Cooling Capacity	Enclosed
	Power	Enclosed
	Mass flow	Enclosed
	Current	Enclosed
IOLP curves	Enclosed	
Compressor Sales Drawing	4 LEG -STANDARD	AWX-3151-01
	3 LEG - STANDARD	AWX-2964-01
	4 LEG -SHORT	AWX-3325-00
	3 LEG - SHORT	-
Wiring diagram PSC / PTCS-CR / CSR / 3-PH	AWX-3383-00	
Serial Label	52597E	
Mounting Grommet	AWX – 2025 – 03	
Mounting Sleeve	AWX – 2026 – 04	
Protective Cover	AWX – 2079 – 02	
Gasket for Protective Cover	AWX – 2078 – 00	
Bale Strap	70661 - 03	

Tecumseh Products India Pvt. Limited - Hyderabad



COOLING CAPACITY CURVE FOR AWZ5516EXN COMPRESSOR

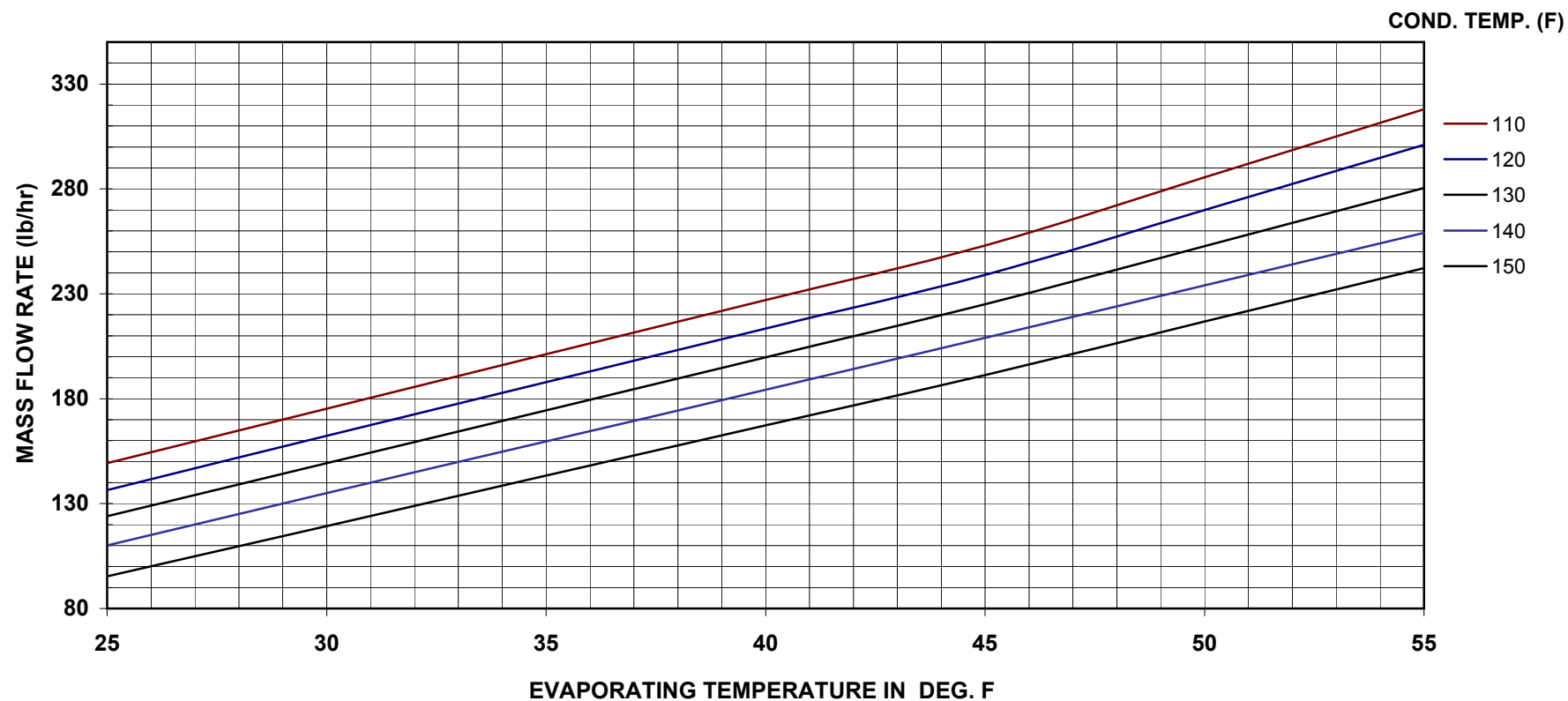
Application : HBP Refrigerent : R-22 Voltage : 208/230V
Frequency : 60 Hz Ambient Temp : 95°F Liquid Sub Cooled : 115°F
Compr.Cooling : 425 CFM Return Gas Temp : 95°F





MASS FLOW CURVE FOR AWZ5516EXN COMPRESSOR

Application	: HBP	Refrigerent	: R-22	Voltage	: 208/230V
Frequency	: 60 Hz	Ambient Temp	: 95°F	Liquid Sub Cooled	: 115°F
Compr.Cooling	: 425 CFM	Return Gas Temp	: 95°F		

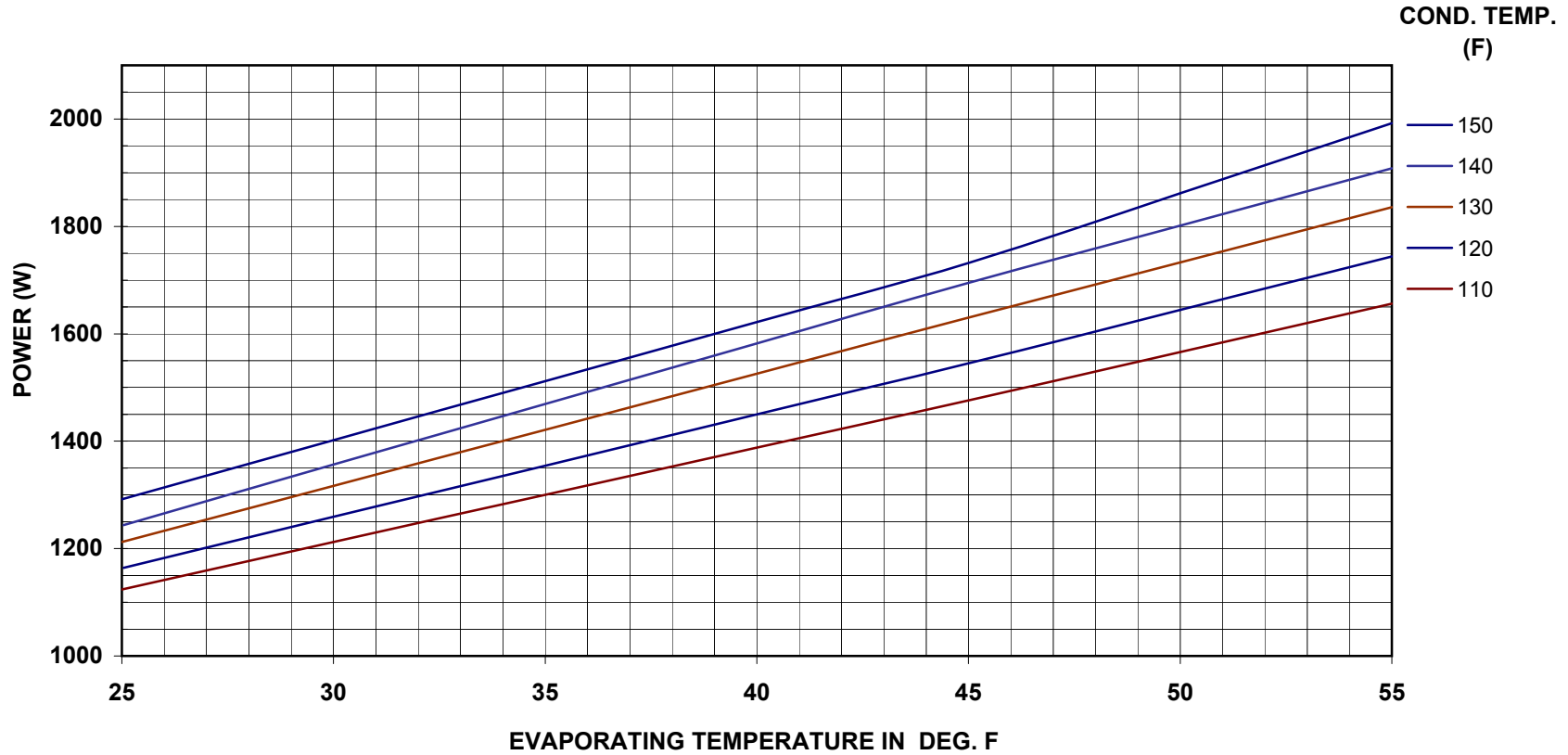


Tecumseh Products India Pvt. Limited - Hyderabad



POWER CURVE FOR AWZ5516EXN COMPRESSOR

Application	: HBP	Refrigerent	: R-22	Voltage	: 208/230V
Frequency	: 60 Hz	Ambient Temp	: 95°F	Liquid Sub Cooled	: 115°F
Compr.Cooling	: 425 CFM	Return Gas Temp	: 95°F		

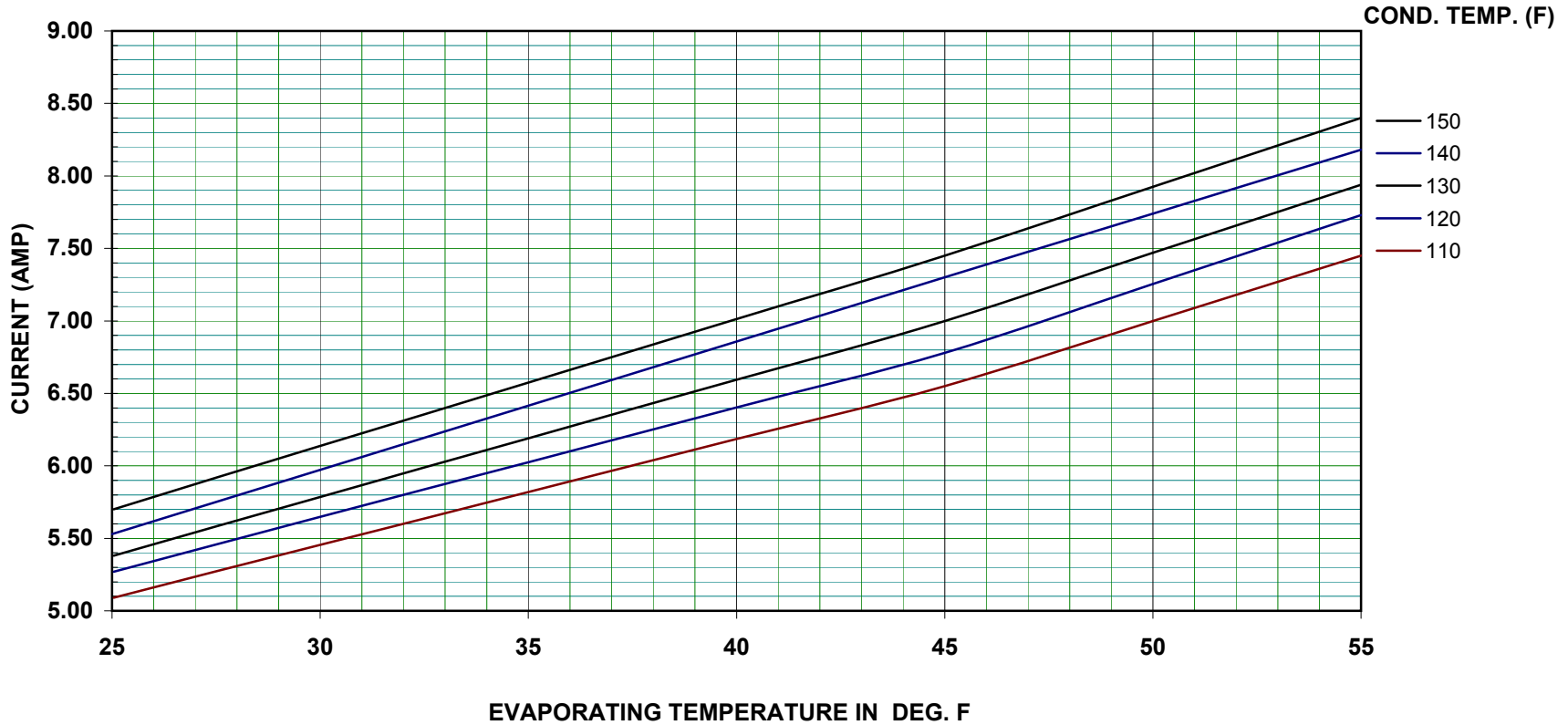


Tecumseh Products India Pvt. Limited - Hyderabad



CURRENT CURVE FOR AWZ5516EXN COMPRESSOR

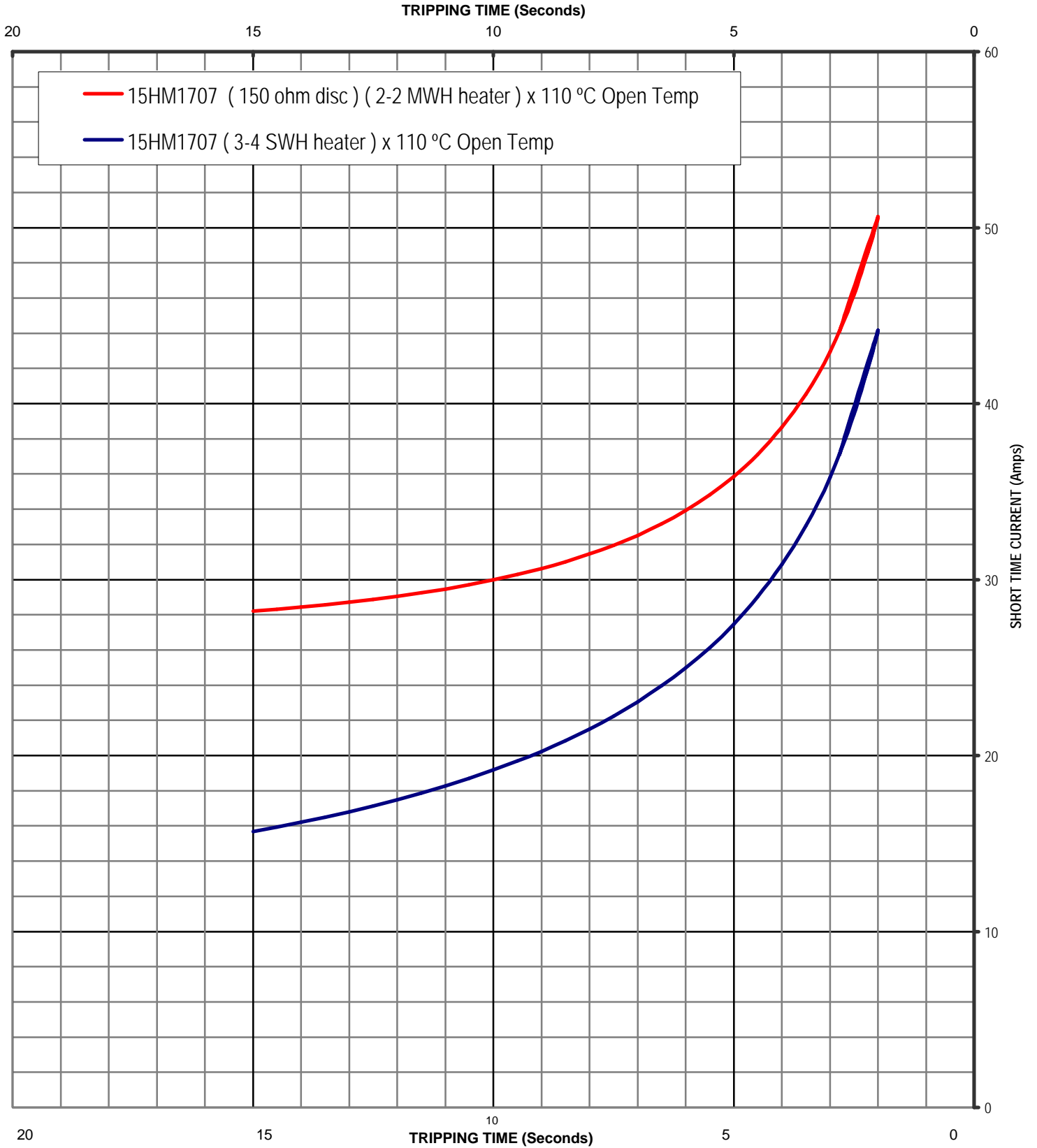
Application	: HBP	Refrigerant	: R-22	Voltage	: 208/230V
Frequency	: 60 Hz	Ambient Temp	: 95°F	Liquid Sub Cooled	: 115°F
Compr.Cooling	: 425 CFM	Return Gas Temp	: 95°F		



15HM MOTOR PROTECTOR

SHORT TIME CURVES

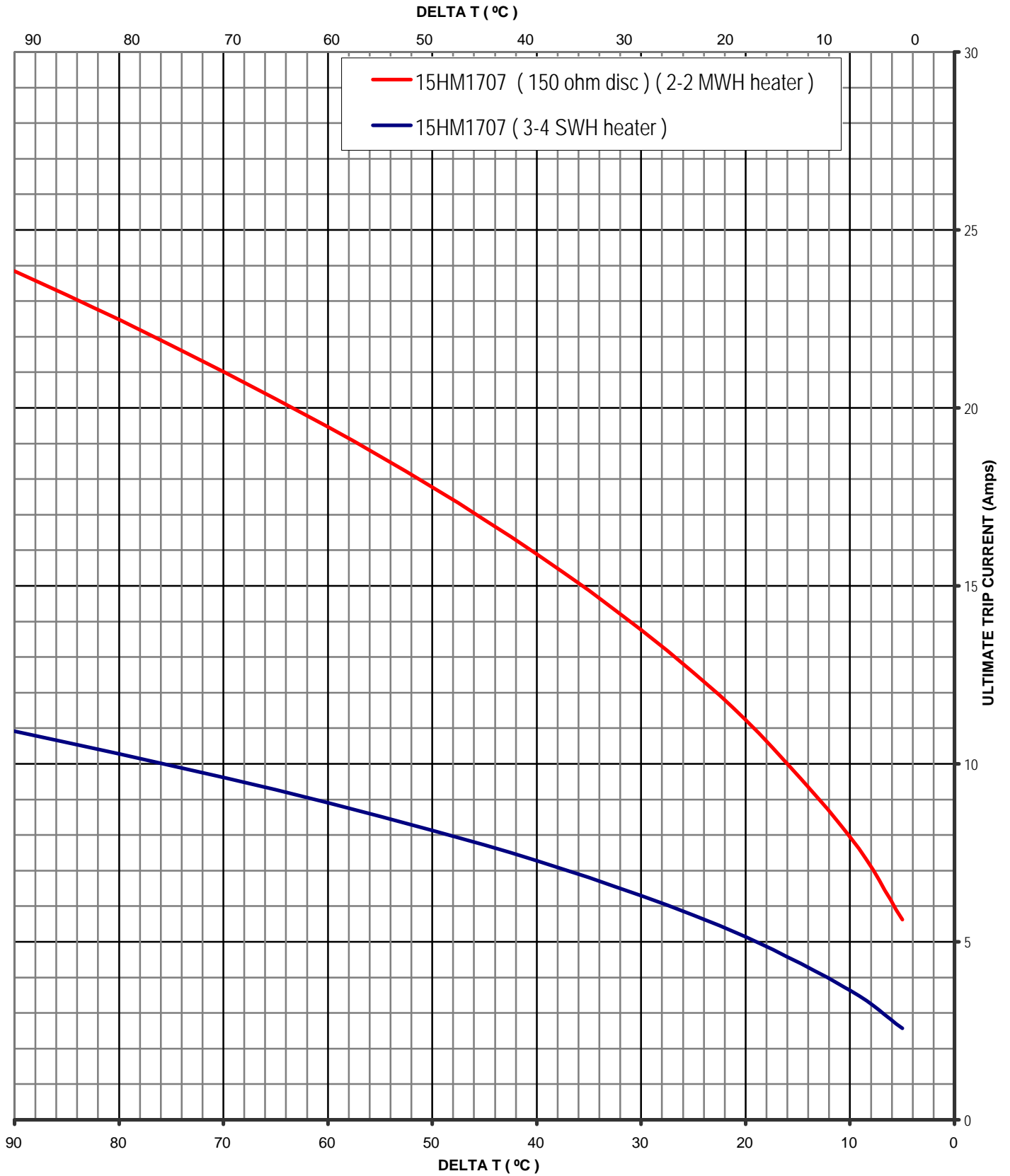
Average First Cycle Tripping Time VS. Current In 25 °C Ambient (Approximate).
To Be Used Only For Selecting Samples For Motor Verification Test.

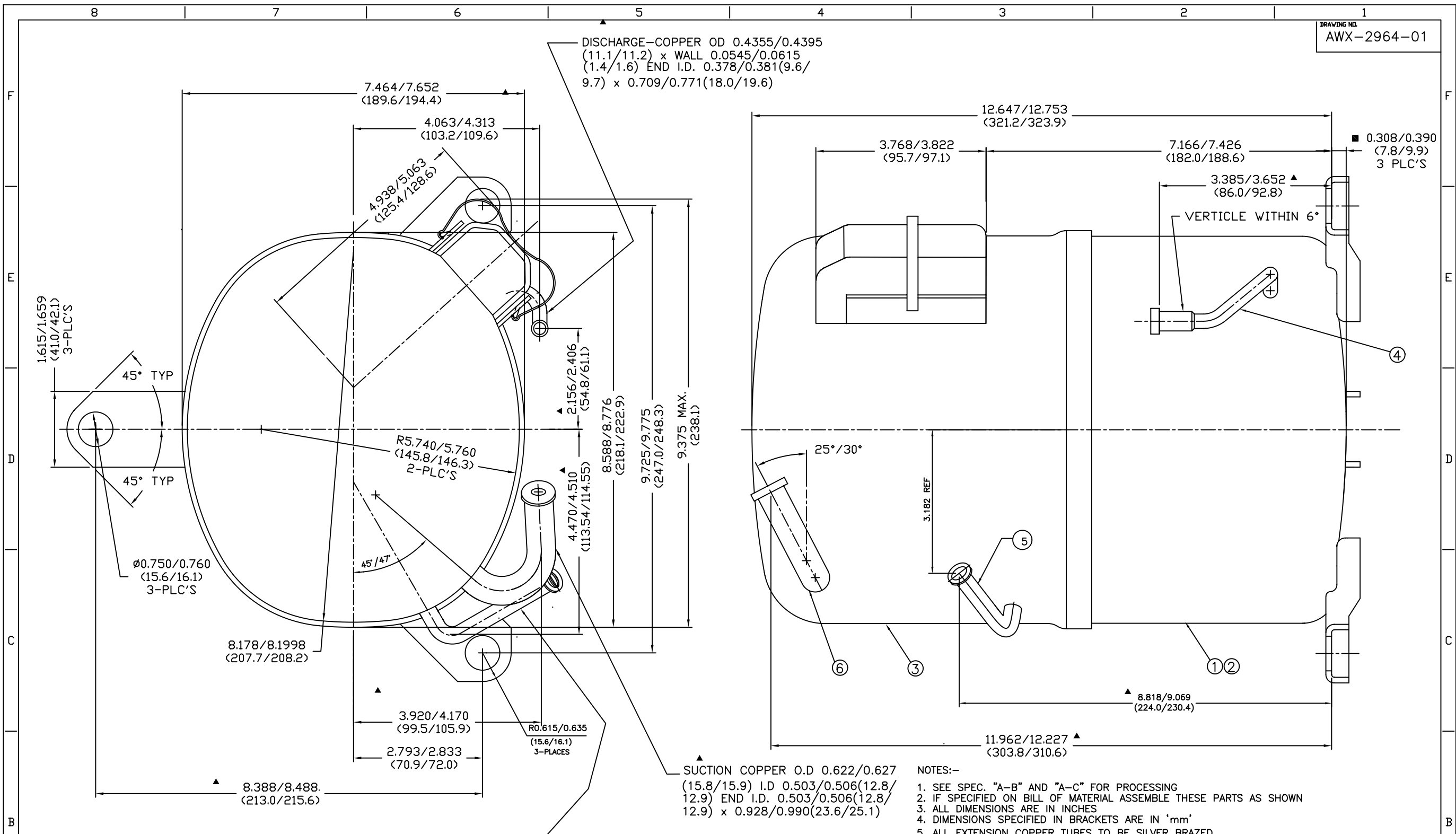


15HM MOTOR PROTECTOR

ULTIMATE TRIP CURVES

Ultimate Trip Current VS. Protector Ambient Temperature (Approximate).
To Be Used Only For Selecting Samples For Motor Verification Test.





- NOTES:-
1. SEE SPEC. "A-B" AND "A-C" FOR PROCESSING
 2. IF SPECIFIED ON BILL OF MATERIAL ASSEMBLE THESE PARTS AS SHOWN
 3. ALL DIMENSIONS ARE IN INCHES
 4. DIMENSIONS SPECIFIED IN BRACKETS ARE IN 'mm'
 5. ALL EXTENSION COPPER TUBES TO BE SILVER BRAZED
 6. ALL TUBE OPENINGS TO BE SEALED WITH SUITABLE RUBBER PLUGS AFTER NITROGEN CHARGING.

Q.A. SYMBOLS

- ★ = CATEGORY I
- ▲ = CATEGORY II
- = CATEGORY III
- = CATEGORY IV

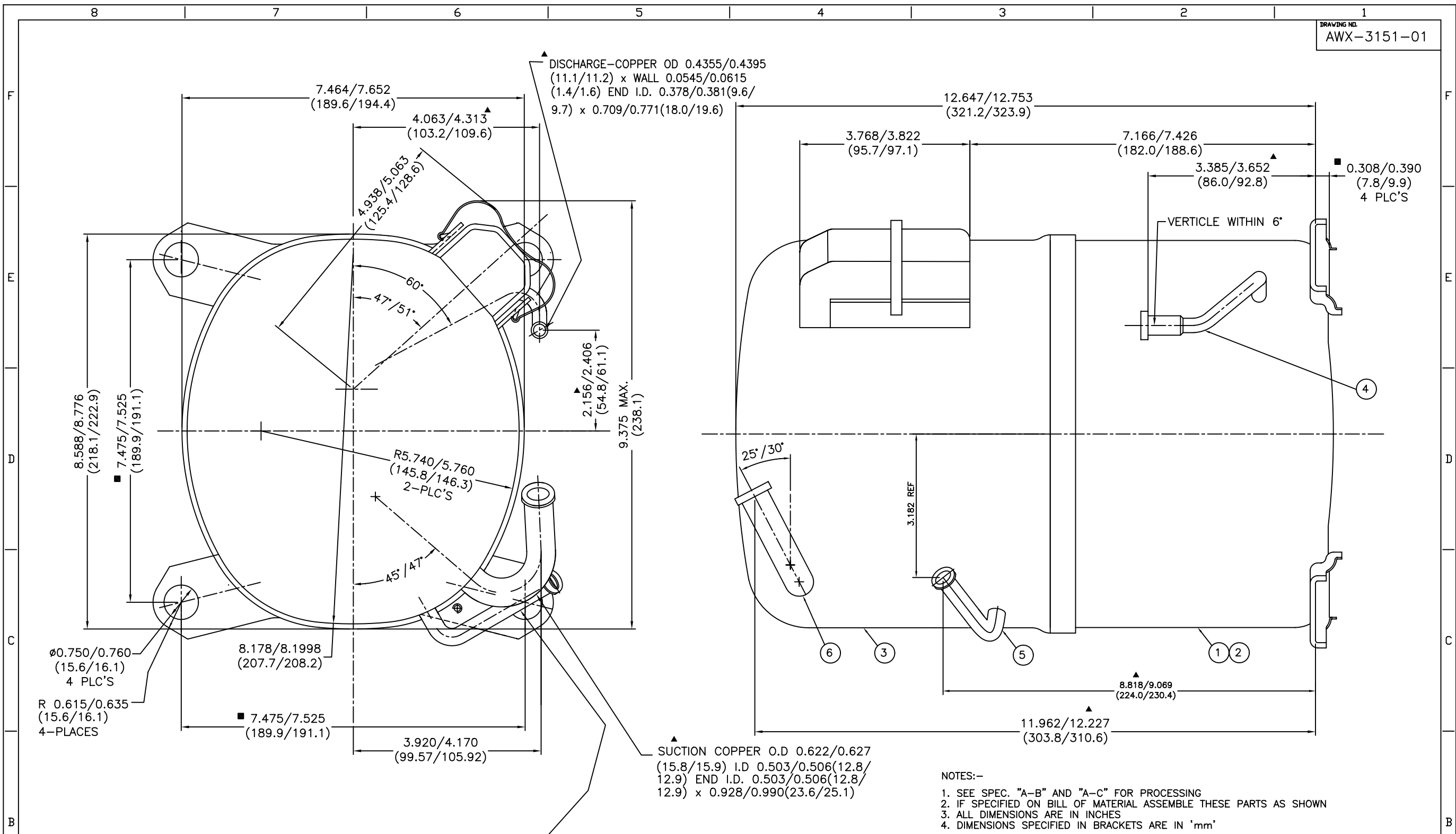
TOLERANCE	OPEN/2PL.DEC.	3 PL.DEC.	4 PL.DEC.
LINEAR			
ANGULAR			

S.NO.	DESCRIPTION	DRG.NO.	QTY
6	SUCTION TUBE	EX-34644	1
5	PROCESS TUBE	AWX-2436	1
4	DISCH. CONNETOR TUBE	34711	1
3	UPPER HOUSING ASSLY.	AWX-2615	1
2	LOWER HOUSING & TUBE ASSLY.	AWX-2924	1
1	LOWER HOUSING ASSLY (MTG.TYPE-3)	AWX-2963	1

AW-104/02-04	PROCESS TUBE THK WAS 0028P	REDRAWN	DATE
A B7	REL	LC	CHANGE

THIS DRAWING OR PRINT IS TO BE THE PROPERTY OF TECUMSEH PRODUCTS INDIA PVT.LTD. IT IS TO BE KEPT IN THE OFFICE AND NOT TO BE LOANED, REPRODUCED, COPIED, OR IN ANY MANNER TO BE USED FOR ANY OTHER PURPOSE WITHOUT THE WRITTEN CONSENT AND SIGNATURE OF THE TECHNICAL MANAGER. THE TECHNICAL MANAGER SHALL BE RESPONSIBLE FOR THE ACCURACY OF THE DRAWING AND SHALL BE RESPONSIBLE FOR THE COMPLIANCE OF THE DRAWING WITH THE REQUIREMENTS OF THE CUSTOMER. THE TECHNICAL MANAGER SHALL BE RESPONSIBLE FOR THE COMPLIANCE OF THE DRAWING WITH THE REQUIREMENTS OF THE CUSTOMER.

DIS.CODE	NAME	SALES COMPRESSOR-3LEG (for Zamil)		
DWN.	CK.	APR.	SCALE	THIS PRINT SUPERSEDES ALL PRINTS PRIOR TO 05FEB04
11SEP03			1:1	DRAWING NO.
TECUMSEH PRODUCTS INDIA PVT.LTD. HYDERABAD, INDIA				AWX-2964-01
MATERIAL				NOTED



- NOTES:-
1. SEE SPEC. "A-B" AND "A-C" FOR PROCESSING
 2. IF SPECIFIED ON BILL OF MATERIAL ASSEMBLE THESE PARTS AS SHOWN
 3. ALL DIMENSIONS ARE IN INCHES
 4. DIMENSIONS SPECIFIED IN BRACKETS ARE IN 'mm'
 5. ALL EXTENSION COPPER TUBES TO BE SILVER BRAZED
 6. ALL TUBE OPENINGS TO BE SEALED WITH SUITABLE RUBBER PLUGS AFTER NITROGEN CHARGING.

Q.A. SYMBOLS

- ★ = CATEGORY I
- ▲ = CATEGORY II
- = CATEGORY III
- = CATEGORY IV

TOLERANCE	OPEN/2PL.DEC. 3 PL.DEC. 4 PL.DEC.
	LINEAR
ANGULAR	

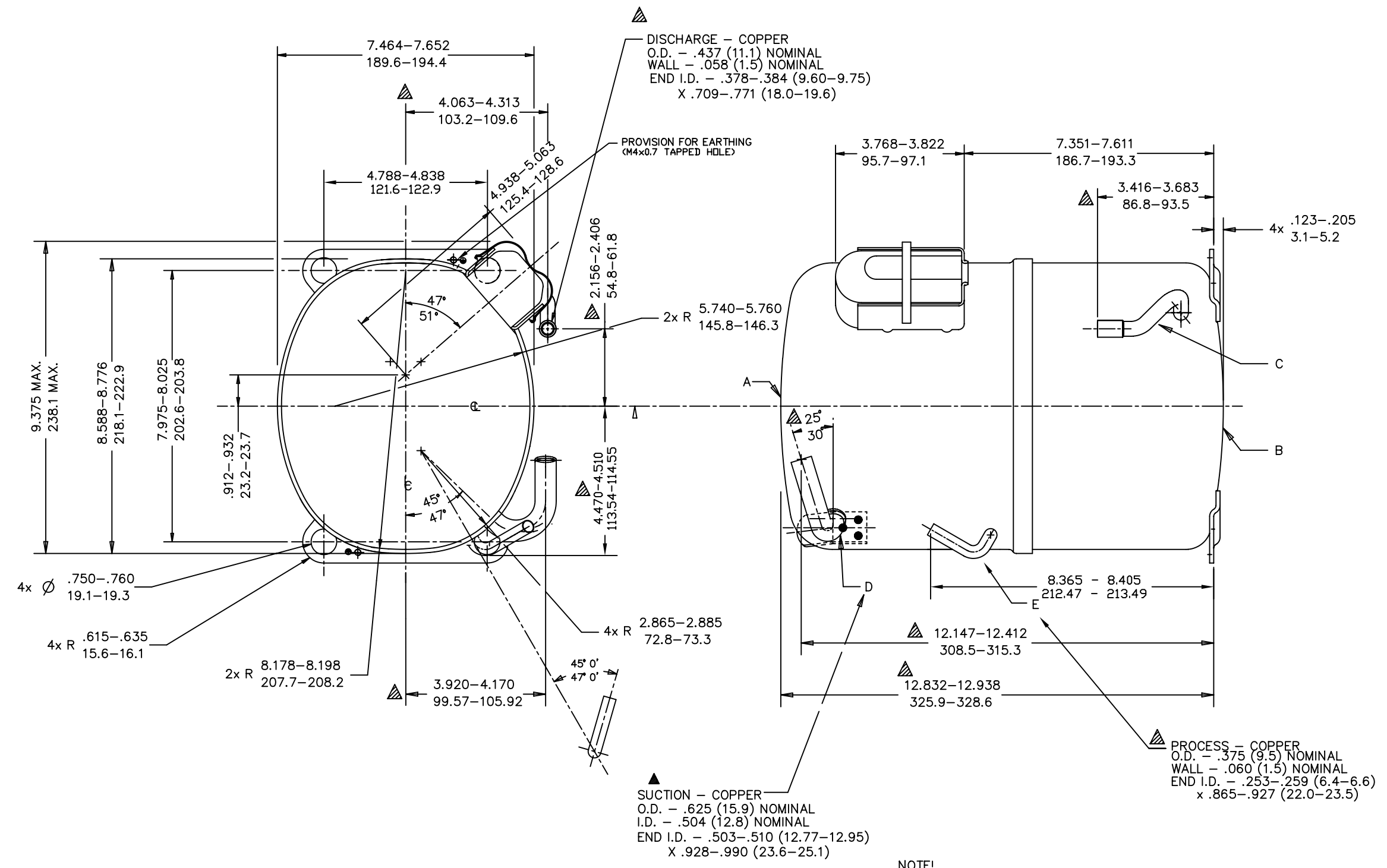
S.NO.	DESCRIPTION	DRG.NO.	QTY
6	SUCTION TUBE	EX-34644	1
5	PROCESS TUBE	AWX-2436	1
4	DISCH. CONNETOR TUBE	34711	1
3	UPPER HOUSING ASSLY.	AWX-2615	1
2	LOWER HOUSING & TUBE ASSLY.	AWX-2924	1
1	LOWER HOUSING ASSLY (MTG.TYPE-1)	AWX-1678	1

REL	AM-024/02-04	PROCESS TUBE THK WAS 0.028"	05-02-04	DATE
REL	LT	LC	RETRAVN	CHANGE

THIS DRAWING OR PRINT IS THE PROPERTY OF TECUMSEH PRODUCTS INDIA PVT.LTD. AND IS NOT TO BE REPRODUCED OR TRANSMITTED IN ANY FORM OR BY ANY MEANS, ELECTRONIC OR MECHANICAL, INCLUDING PHOTOCOPYING, RECORDING, OR BY ANY INFORMATION STORAGE AND RETRIEVAL SYSTEM, WITHOUT THE WRITTEN CONSENT AND SIGNATURE OF THE TECHNICAL MANAGER. THIS DRAWING IS THE PROPERTY OF TECUMSEH PRODUCTS INDIA PVT.LTD. AND IS NOT TO BE REPRODUCED OR TRANSMITTED IN ANY FORM OR BY ANY MEANS, ELECTRONIC OR MECHANICAL, INCLUDING PHOTOCOPYING, RECORDING, OR BY ANY INFORMATION STORAGE AND RETRIEVAL SYSTEM, WITHOUT THE WRITTEN CONSENT AND SIGNATURE OF THE TECHNICAL MANAGER.

DIS.CODE	NAME	SALES COMPRESSOR-4LEG (For Zamil)		
DWN.	CK.	APR.	SCALE	THIS PRINT SUPERSEDES ALL PRINTS PRIOR TO 22SEP03
RAVINDAR			1:1	DRAWING NO.
22SEP03				AWX-3151-01
MATERIAL				NOTED
TECUMSEH PRODUCTS INDIA PVT.LTD. HYDERABAD, INDIA				

NOTED



NOTE!
1. IF SPECIFIED ON BILL OF MATERIAL ASSEMBLE THESE PARTS AS SHOWN.
DIMENSIONING = $\frac{\text{INCHES}}{\text{MILLIMETERS}}$ OR INCHES (MILLIMETERS)

MANUFACTURING NOTES
1. SEE DWG. #AHT38 FOR ASSY. OF DISCHARGE CONNECTOR & LOWER SHOCK LOOP IN LOWER HOUSING.
2. SEE SPEC. "A-B" & "A-C" FOR PROCESSING.

A	HA-642-4-1
B	AWX-3155
C	34711
D	EX-34644
E	EX-34467

REV	DATE	DESCRIPTION

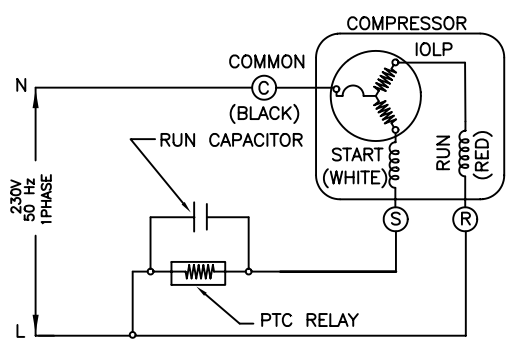
DIS.CODE	SALES COMPRESSOR-4LEG (SHORT)			
DWN.	CK.	APR.	SCALE	THIS PRINT SUPERSEDES ALL PRINTS PRIOR TO 03JUL04
RAVINDAR	16JUN03		1"=2"	
TECUMSEH PRODUCTS INDIA LTD HYDERABAD, INDIA				PART NO.
MATERIAL				AWX-3325-00
INTERNAL USE ONLY				

Q.A. SYMBOLS

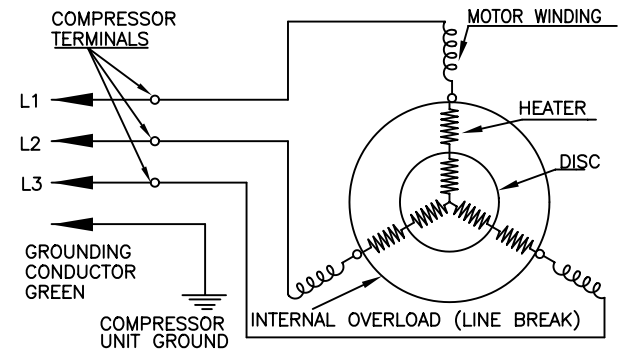
★	= CATEGORY I
▲	= CATEGORY II
■	= CATEGORY III
□	= CATEGORY IV

DRAWING NO.
AWX-3383-00

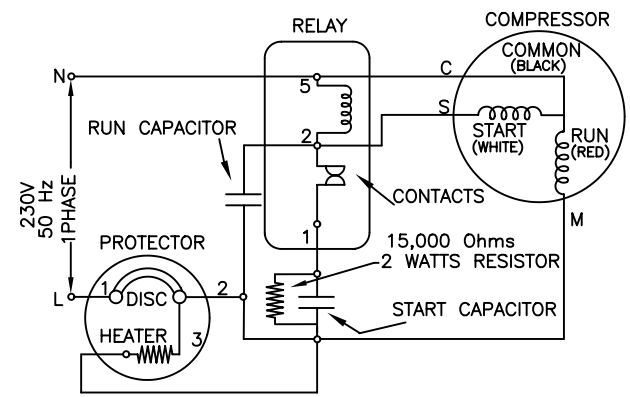
WIRING DIAGRAM - PTCS-CR CIRCUIT



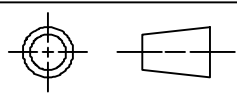
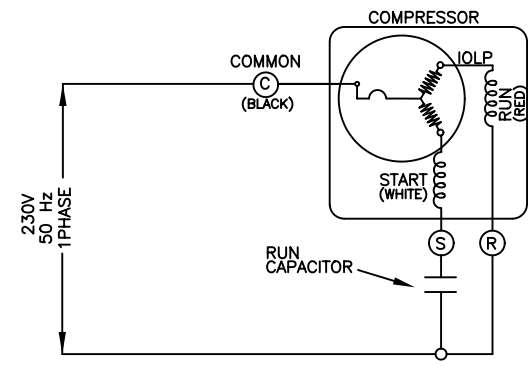
WIRING DIAGRAM - 3 PH



WIRING DIAGRAM - CSR CIRCUIT



WIRING DIAGRAM - PSC CIRCUIT



TOLERANCE	OPEN	3 PL. DEC	4 PL. DEC
LINEAR	---		
ANGULAR			

Q.A. SYMBOLS

- ★ = CATEGORY I
- ▲ = CATEGORY II
- = CATEGORY III
- = CATEGORY IV

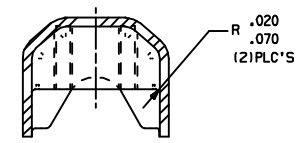
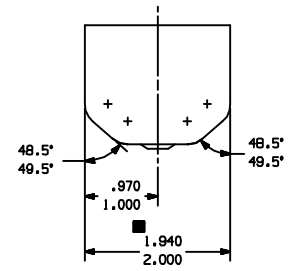
LT	LC	CHANGE	DATE

THIS DRAWING OR PRINT IS THE PROPERTY OF TECUMSEH PRODUCTS INDIA LTD. (TECUMSEH) AND CONTAINS PROPRIETARY AND CONFIDENTIAL INFORMATION BELONGING TO TECUMSEH. IT IS MADE AVAILABLE TO THE RECIPIENT UNDER THE CONDITION THAT NEITHER IT NOR THE INFORMATION CONTAINED THEREIN OR DISCLOSED THEREIN SHALL BE DISCLOSED OR MADE AVAILABLE TO ANY OTHER PERSON, FIRM, OR ORGANIZATION WITHOUT THE WRITTEN CONSENT OF TECUMSEH. PRIOR EXPRESS AND SPECIFIC WRITTEN CONSENT AND (IV) THIS INFORMATION IS TO BE RETURNED TO TECUMSEH AS SOON AS POSSIBLE AFTER SUCH REQUEST IS MADE.

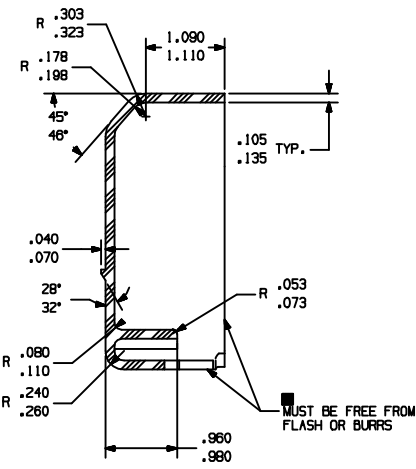
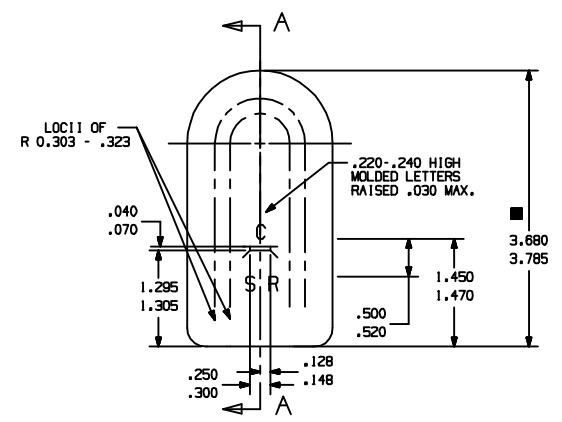
DIS.CODE	NAME				ELECTRICAL WIRING DIAGRAM	
DWN. SEKHAR 09SEP04	CK. G.N.R	APR.	SCALE NTS	THIS PRINT SUPERSEDES ALL PRINTS PRIOR TO		
MATERIAL	TECUMSEH PRODUCTS INDIA LTD. HYDERABAD, INDIA				DRAWING NO. AWX-3383-00	

NOTES:

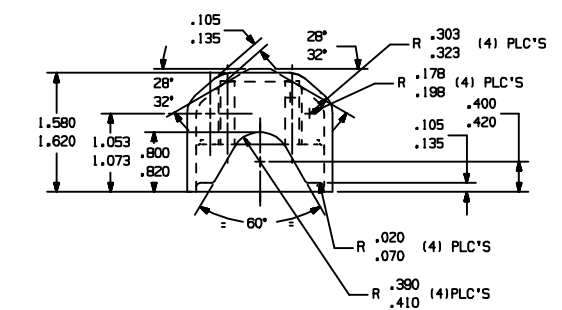
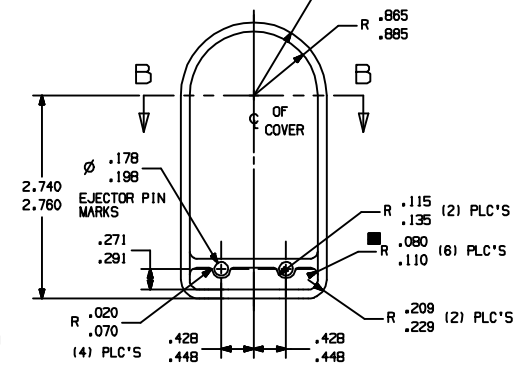
1. SEE T.P.CO. SPEC. #H-101.
2. COLOR - BLACK.
3. MATERIAL - PLASTIGAGE CORP. FIBER GLASS REINFORCED POLYESTER (BLACK COMPOUND) U.L. RECOGNIZED HETHER LITE 802-5574.
4. ALT. MATL. - AMERICAN CYANAMID CO. GLASS REINFORCED ALKYD MOLDING (BLACK) COMPOUND U.L. RECOGNIZED COMPOUND "GLASKYD", 3001G OR INDUSTRIAL DIELECTRICS MAT'L. DESIGNATION P. 5003 FR (MOLDER GREAT LAKES PLASTICS INC.)
5. ALT. MATERIAL : DEV1 POLYMERS DOUGH MOLDING COMPOUND U.L. RECOGNIZED "FLODOMAT" #5585/30
6. ALT. MATERIALS : NORYL PX8406N (GE) -UL APPROVED
7. VENDOR MUST SHOW MATL. DESIGNATION ON OUTSIDE OF SHIPPING CONTAINER.
8. VENDOR SHOULD UNDERGO UL'S MOLDER PROGRAM FOR PLASTICS



SECTION B - B



SECTION A - A



3D, UG-NX

Q.A. SYMBOLS

- ★ = CATEGORY I
- ▲ = CATEGORY II
- = CATEGORY III
- = CATEGORY IV



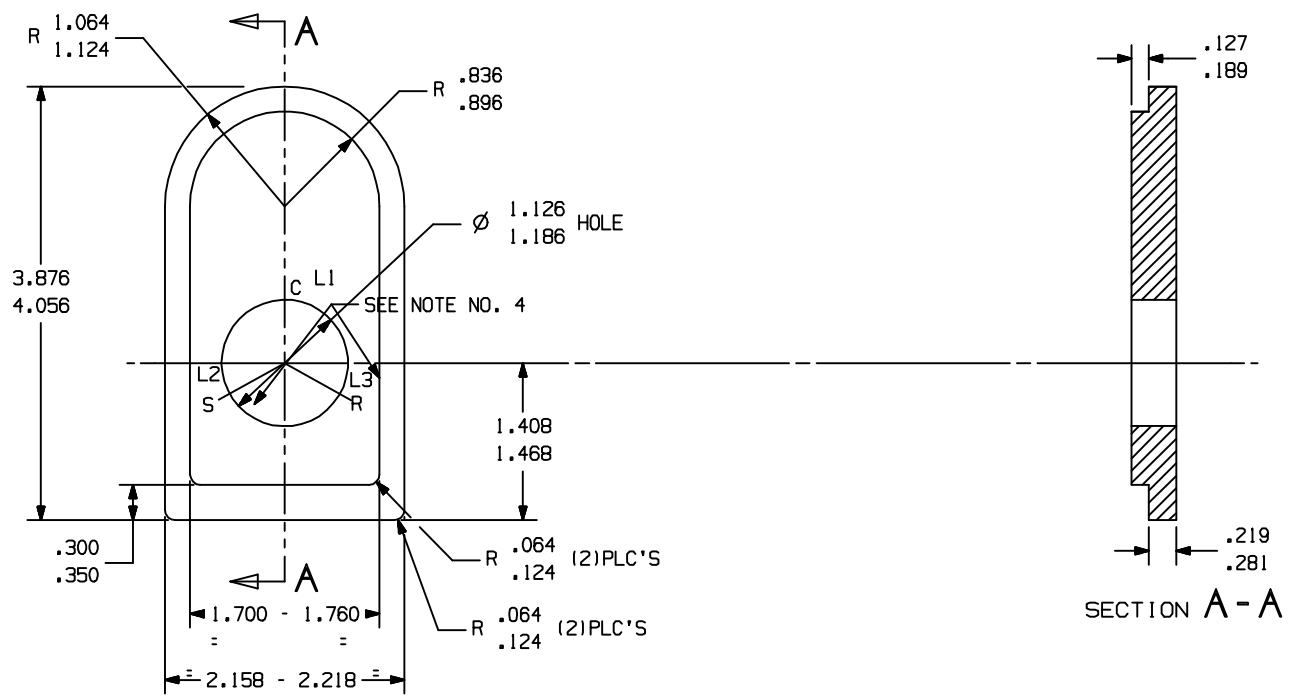
TOLERANCE OPEN/PL DEC. 3 PL DEC. 4 PL DEC.
LINEAR
ANGULAR

REV.	DATE	BY	CHKD.	DESCRIPTION
1	10/10/2018	SPM	SPM	INITIAL RELEASE
2	10/10/2018	SPM	SPM	CHANGED
3	10/10/2018	SPM	SPM	MODIFIED
4	10/10/2018	SPM	SPM	REVISIONS
5	10/10/2018	SPM	SPM	INTERGRATED
6	10/10/2018	SPM	SPM	DATE

DIS. CODE	NAME	PROTECTIVE COVER
DWL	SPMANI	ON FILE
OK.	02AUG03	ON FILE
APPL.		1:1
SCALE		1:1
TECUMSEH PRODUCTS INDIA PVT.LTD.		
HYDERABAD, INDIA		
MATERIAL		
SEE NOTES		

DRAWING NO. AWX-2079-02

DRAWING NO.
AWX-2078-00



NOTES:

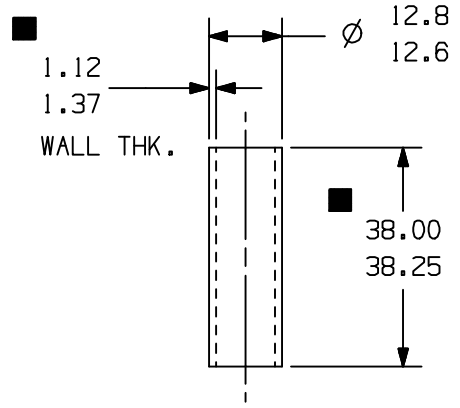
1. SEE T.P.Co. SPEC. NO. E-75 FOR STORAGE
2. VENDOR MUST SHOW MATERIAL DESIGNATION ON, OUTSIDE OF SHIPPING CONTAINER
3. MATERIAL- RUBATEX R425 N (OR) NEOPRENE
ALT. MATERIAL : AMERICAN NATIONAL RUBBER CO. -4219 N
ALT. MATERIAL -UNIROYAL INSOLITE TYPE IV2
4. 3/16 HIGH LETTER AS SHOWN 3-PLACES USING DERUSTO MAINUTE
FINISH HIGLOSS SPEED FINISH D-25 ALUMINUM
5. MATERIAL DENSITY = 30 TO 40 PCF

Q.A. SYMBOLS			
★	=	CATEGORY I	
▲	=	CATEGORY II	
■	=	CATEGORY III	
□	=	CATEGORY IV	

TOLERANCE	OPEN/2PL.DEC.	3 PL.DEC.	4 PL.DEC.
LINEAR	-	-	-
ANGULAR	±1°		

REVISION IN UNIGRAPHICS	MATERIAL	DATE	NAME				
LT/LC	CHANGE		GASKET FOR PROTECTIVE COVER				
<small>THIS DRAWING OR PRINT SHALL BE THE PROPERTY OF TPCO. IT CONTAINS INFORMATION BELONGING TO TPCO. IT IS TO BE KEPT IN CONFIDENCE AND NOT TO BE DISCLOSED OR MADE AVAILABLE TO ANY OTHER PERSON OR ORGANIZATION WITHOUT THE WRITTEN CONSENT OF TPCO. ANY REPRODUCTION OR TRANSMISSION OF THIS DRAWING OR PRINT WITHOUT THE WRITTEN CONSENT OF TPCO IS STRICTLY PROHIBITED. TPCO SHALL BE HELD HARMLESS FROM ANY AND ALL DAMAGES, LOSSES AND EXPENSES INCURRED BY THE RECIPIENT IN CONNECTION WITH THE USE OF THIS DRAWING OR PRINT. TPCO SHALL BE HELD HARMLESS FROM ANY AND ALL DAMAGES, LOSSES AND EXPENSES INCURRED BY THE RECIPIENT IN CONNECTION WITH THE USE OF THIS DRAWING OR PRINT. TPCO SHALL BE HELD HARMLESS FROM ANY AND ALL DAMAGES, LOSSES AND EXPENSES INCURRED BY THE RECIPIENT IN CONNECTION WITH THE USE OF THIS DRAWING OR PRINT.</small>			DWG. NO.	CK.	APR.	SCALE	THIS PRINT SUPERSEDES ALL PRINTS PRIOR TO
			SPMAN1 11JUN03	ON FILE	ON FILE	1:1	
TECUMSEH PRODUCTS INDIA PVT.LTD. HYDERABAD, INDIA							DRAWING NO.
MATERIAL REFER NOTES							AWX-2078-00

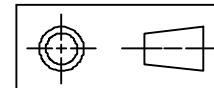
DRAWING NO.
AWX-2026-04



NOTES:

1. TO BE FREE FROM RUST & BURRS.
2. TREATMENT: ZINC PASSIVATED 0.005 MM MIN.
3. I.D. MUST ACCEPT A \varnothing 9.68 GAUGE PIN.
4. ALL DIMENSIONS ARE IN MM.

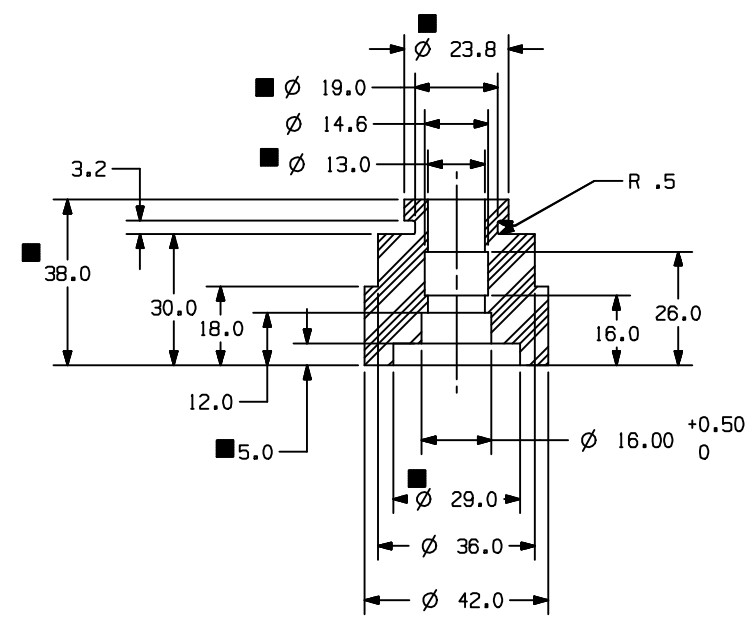
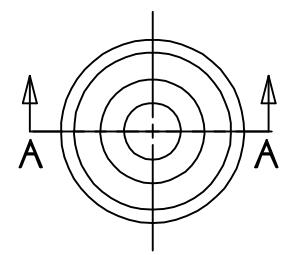
Q.A. SYMBOLS	
★	= CATEGORY I
▲	= CATEGORY II
■	= CATEGORY III
□	= CATEGORY IV



TOLERANCE	OPEN/2PL.DEC.	3 PL.DEC.	4 PL.DEC.
LINEAR	-	-	-
ANGULAR	± 1°		

LT	LC	CHANGE	DATE	DIS.CODE	NAME	DWN.	CK.	APR.	SCALE	THIS PRINT SUPERSEDES ALL PRINTS PRIOR TO
		REDRAWN IN MURALI UNIGRAPHICS 05MAR04		--	GROMMET SLEEVE	VENU 10APRO2	ONFILE	--	1:1	
<p>THIS DRAWING OR PRINT (U) IS THE PROPERTY OF TECUMSEH PRODUCTS COMPANY AND CONTAINS INFORMATION BELONGING TO TECUMSEH. (U) IS MADE AVAILABLE TO THE SPECIFIC CONDITION THAT NEITHER IT NOR THE INFORMATION CONTAINED THEREIN SHOULD BE USED IN ANY MANNER WITHOUT THE EXPRESS AND WRITTEN CONSENT OF TECUMSEH. ONLY AS EXPRESSLY AND SPECIFICALLY APPROVED IN WRITING BY TECUMSEH AND NOT BE REPRODUCED IN ANY MANNER OR TO ANY EXTENT WITHOUT TECUMSEH'S PRIOR EXPRESS AND WRITTEN CONSENT. THE RECIPIENT SHALL BE RETURNED BY THE RECIPIENT THEREOF TO TECUMSEH AT THE ADDRESS INDICATED PROMPTLY AFTER SUCH REQUEST IS MADE.</p> <p>DO NOT SCALE THIS DRAWING. MATERIALS MUST NOT BE MAGNETIZED AS RECEIVED OR AT COMPRESSOR ASSEMBLY.</p>										DRAWING NO.
<p>TECUMSEH PRODUCTS INDIA PVT.LTD. HYDERABAD, INDIA</p> <p>MATERIAL WELDED STEEL TUBE CEW AS PER IS: 3074</p>										AWX-2026-04

DRAWING NO.
AWX-2025-03



MATERIAL : 50% SBR + 50% NATURAL RUBBER
CLASS & TYPE AA AS PER H-110

- PROPERTIES:
1. HARDNESS : 37 DHN ± 3
 2. TENSILE STRENGTH : 1015 PSI MIN.
 3. ELONGATION : 400% MIN.
 4. AFTER AGING AT 70° C FOR 70 HRS
 - a) HARDNESS: ± 15
 - b) TENSILE STRENGTH: ± 30%
 - c) ELONGATION: - 50% MAX
 5. COMPRESSION TEST: 50% MAX. 22HRS AT 70° C
 - ▲ 6. COLOUR : BLACK
 - ▲ 7. SPECIFIC GRAVITY 1.2±0.1

- NOTES:
1. TO BE FREE FROM FLASH
 2. ALL DIMENSIONS ARE IN MM

SECTION A - A

Q.A. SYMBOLS	
★	= CATEGORY I
▲	= CATEGORY II
■	= CATEGORY III
□	= CATEGORY IV

TOLERANCE	AW		
	OPEN/2PL.DEC.	3 PL.DEC.	4 PL.DEC.
LINEAR	±0.010	-	-
ANGULAR	±1°	-	-

REVISIONS NO. DATE BY	REVISIONS	DATE	NAME				GROMMET				
	DATE	BY	DIS. CODE	DWN.	CK.	APR.	SCALE	THIS PRINT SUPERSEDES ALL PRINTS PRIOR TO			
	DATE	BY	DWN.	CK.	APR.	SCALE	DRAWING NO.				
	DATE	BY	DWN.	CK.	APR.	SCALE	DRAWING NO.				
MATERIAL			TECUMSEH PRODUCTS INDIA LTD. HYDERABAD, INDIA				DRAWING NO.				
REF. ABOVE							AWX-2025-03				

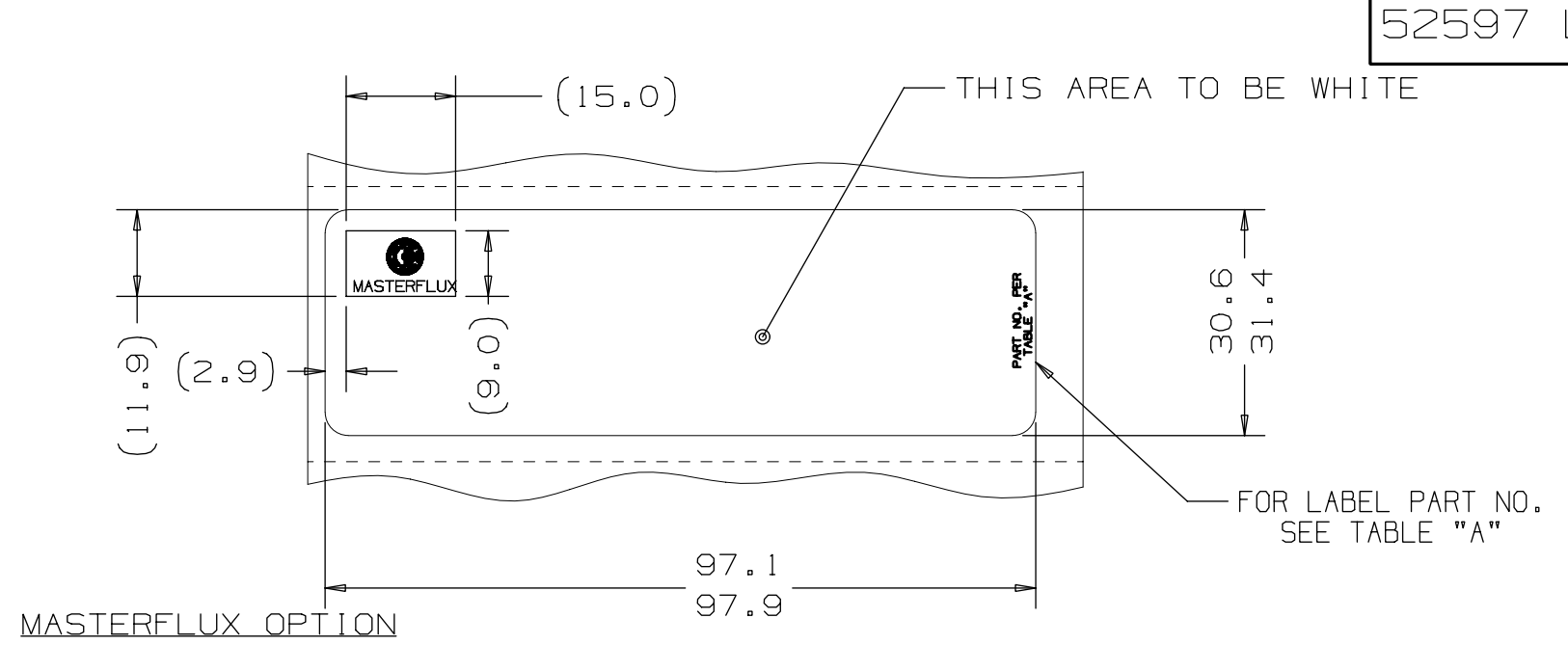
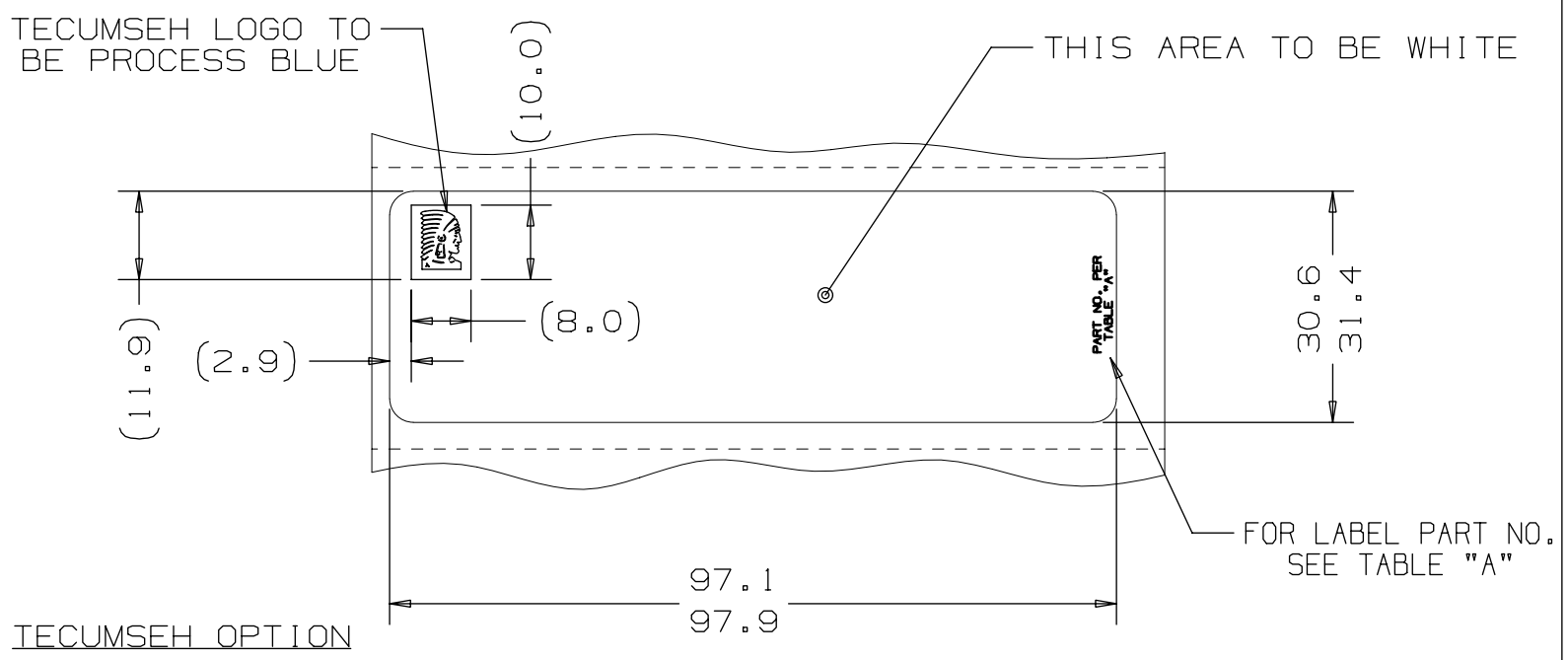
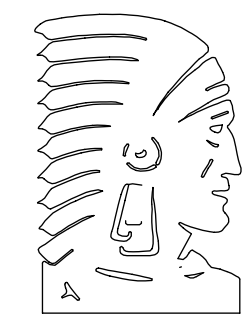
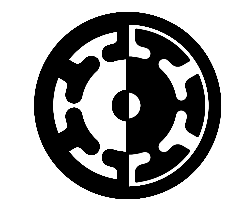


TABLE "A"

MFG LOCATION	PART NO.	LABEL MATERIAL	LOGO DWG. No.
USA/TdB	52597B	THERMLFILM PM200W - TC - 387 WITH L-23 ADHESIVE - 103mm WIDE - 40# SILICON.	MD893
TEC EUROPE	52597D	POLYESTER 7813 SILVER WITH 300 ADHESIVE MADE BY 3M AND THERMLFILM MM300 SATIN SILVER TC-712 WITH V-660 ADHESIVE MADE BY FLEXCON	MD893
TEC INDIA	52597E	3M 7385 TAMPER-INDICATING WITH #320 "HIGH TENACITY" ACRYLIC ADHESIVE - OR THERMLFILM PM200W - TC - 387 WITH L-23 ADHESIVE - 103mm WIDE - 40# SILICON.	MD893
MASTERFLUX	52547F	THERMLFILM PM200W - TC - 387 WITH L-23 ADHESIVE - 103mm WIDE - 40# SILICON.	MD892



TECUMSEH LOGO
SCALE 5:1
REF. DRAWING #MD893



MASTERFLUX

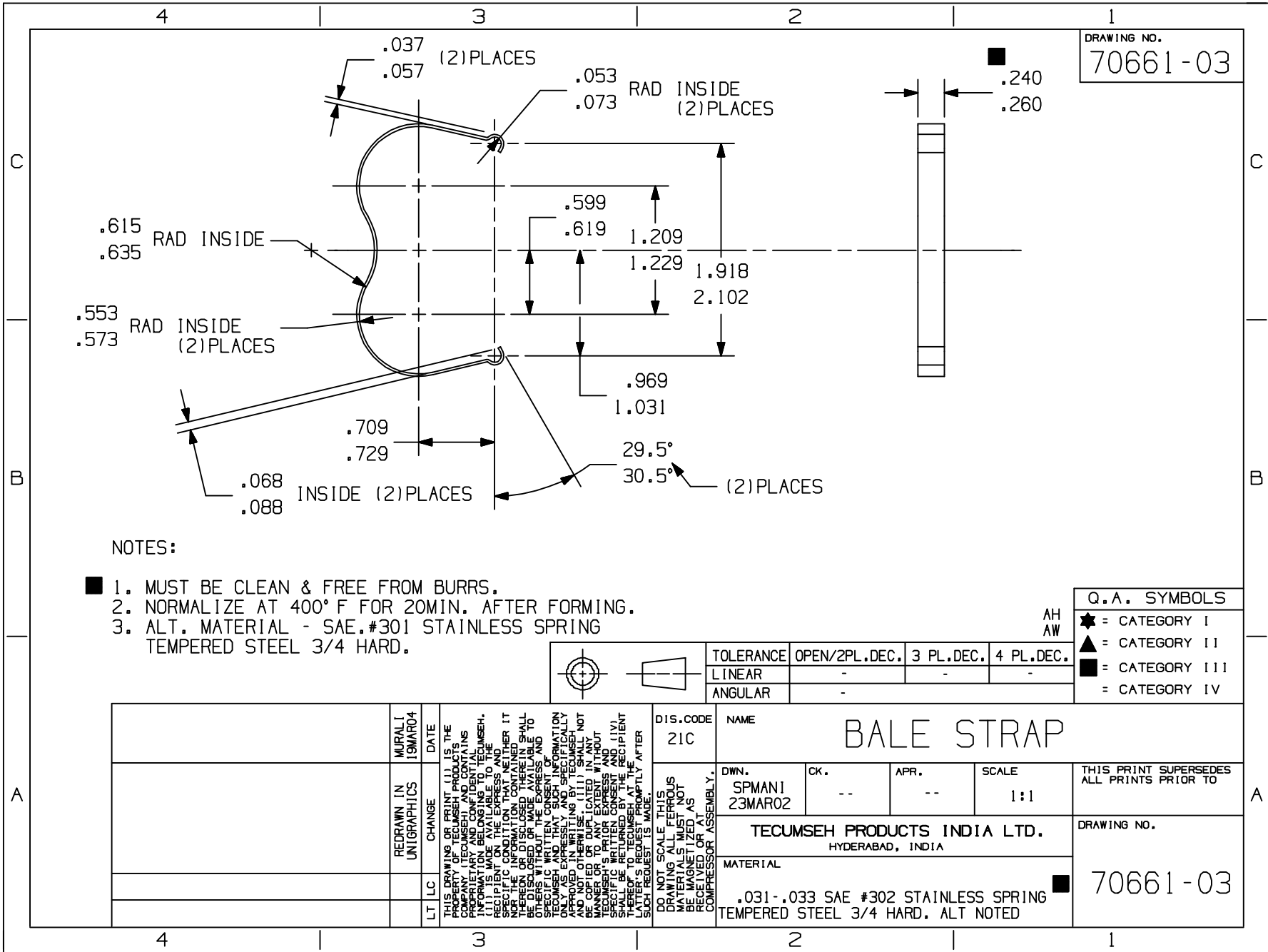
MASTERFLUX LOGO
SCALE 5:1
REF. DRAWING #MD892

- NOTES--
- PART MUST BE APPROVED PER T.P. Co. GLOBAL SPEC. #07.
 - FOR LABEL MATERIAL, PRINTER, PRINTER RIBBONS SEE TABLE "A"
 - PACKAGING TO BE MARKED WITH T.P.Co. PART NUMBER, DIECUT LABELS WOUND ON CORES OF 76.2mm I.D. x 82.6mm O.D.
 - FOR LOGO STYLE, FONT, AND COLORS SEE TABLE "A".

METRIC
Q.A. SYMBOLS
☆ = CATEGORY I
△ = CATEGORY II
□ = CATEGORY III
○ = CATEGORY IV

ALL

		REEVES 20AUG03			DATE			DIS.CODE		NAME		COMPRESSOR SERIAL LABEL	
		#241521-030 DWG.# MD893 WAS MC893	ADDED REFERENCE NOTE TO LOGOS	REEVES 20AUG03	DATE			DWN. DTD 12JUN03		CK. ON FILE	APR. ON FILE	SCALE 1=1	THIS PRINT SUPERSEDES ALL PRINTS PRIOR TO
		3B	2C	#241521-026 ADDED ALT. MATERIAL FOR 52597E	DATE			TECUMSEH PRODUCTS CO.		TECUMSEH, MICHIGAN		DRAWING NO. 52597 LTR	
		E	D	#241521-015 ADDED 52597F	DATE			MATERIAL		NOTED			
			C	#241521-023 ADDED 52597E	DATE			DRAWING No. MD888-07		REVISION LEVEL:		REL	
			B	#241521-020 ADDED TEC. LOGO VIEW ADDED LOC. DIMENSIONS	DATE								
			A	REL #241521-013	DATE								



DRAWING NO.
70661-03

NOTES:

- 1. MUST BE CLEAN & FREE FROM BURRS.
- 2. NORMALIZE AT 400° F FOR 20MIN. AFTER FORMING.
- 3. ALT. MATERIAL - SAE.#301 STAINLESS SPRING TEMPERED STEEL 3/4 HARD.

Q.A. SYMBOLS

- ★ = CATEGORY I
- ▲ = CATEGORY II
- = CATEGORY III
- = CATEGORY IV

	TOLERANCE	OPEN/2PL.DEC.	3 PL.DEC.	4 PL.DEC.
	LINEAR	-	-	-
	ANGULAR	-	-	-

	REDRAWN IN UNIGRAPHICS	MURALI 19MAR04	DATE	THIS DRAWING OR PRINT (I) IS THE PROPERTY OF TECUMSEH PRODUCTS. IT IS UNLAWFUL TO REPRODUCE, COPY, TRANSMIT, DISSEMINATE, OR CONFIDENTIAL INFORMATION BELONGING TO TECUMSEH, OR TO MAKE IT AVAILABLE TO OTHERS WITHOUT THE EXPRESS AND SPECIFIC WRITTEN CONSENT OF TECUMSEH. ANY INFORMATION CONTAINED HEREIN IS UNCLASSIFIED IN ANY MANNER OR TO ANY EXTENT WITHOUT THE EXPRESS AND SPECIFIC WRITTEN CONSENT OF TECUMSEH'S PRIOR EXPRESS AND WRITTEN AUTHORIZATION. THE RECIPIENT SHALL BE RESPONSIBLE FOR THE PROTECTION OF THIS INFORMATION AND SHALL BE PROMPTLY AFTER SUCH REQUEST IS MADE.	DIS.CODE 21C	NAME BALE STRAP			
					DWN. SPMAN1 23MAR02	CK. --	APR. --	SCALE 1:1	THIS PRINT SUPERSEDES ALL PRINTS PRIOR TO
					TECUMSEH PRODUCTS INDIA LTD. HYDERABAD, INDIA				DRAWING NO.
					MATERIAL .031-.033 SAE #302 STAINLESS SPRING TEMPERED STEEL 3/4 HARD. ALT NOTED				70661-03